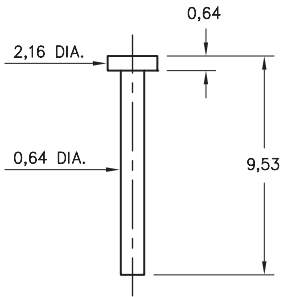
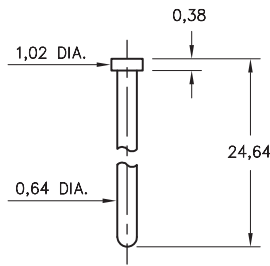


5062



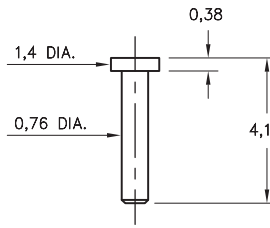
5062-0-00-XX-00-00-33-0
Solder mount in 0,74 mounting hole

8451



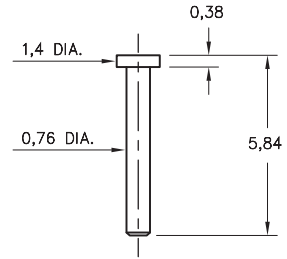
8451-0-00-XX-00-00-33-0
Solder mount in 0,74 mounting hole

6477



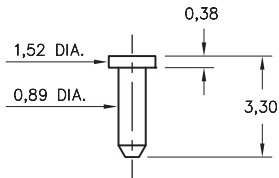
6477-0-00-XX-00-00-38-0
Solder mount in 0,86 mounting hole

4477



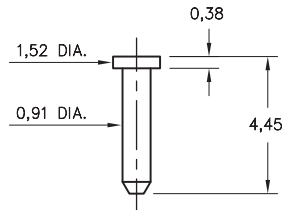
4477-0-00-XX-00-00-33-0
Solder mount in 0,86 mounting hole

4268



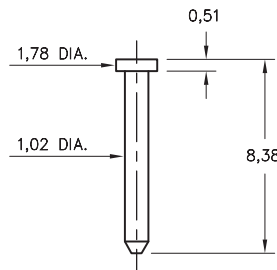
4268-0-00-XX-00-00-33-0
Solder mount in 0,99 mounting hole

9086



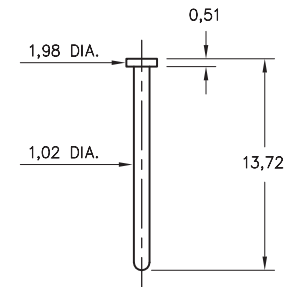
9086-0-00-XX-00-00-33-0
Solder mount in 1,02 mounting hole

8330



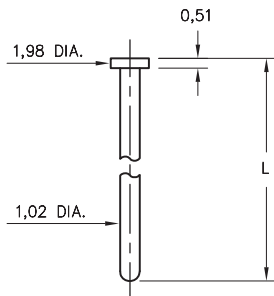
8330-0-00-XX-00-00-38-0
Solder mount in 1,12 mounting hole

9228



9228-0-00-XX-00-00-38-0
Solder mount in 1,12 mounting hole

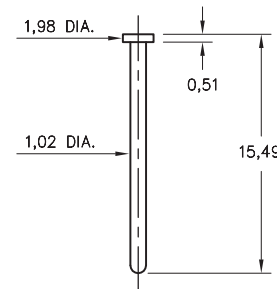
6095



6095-X-00-XX-00-00-38-0
Solder mount in 1,12 mounting hole

Basic Part Number	Pin Length L
6095-0	14,73
6095-1	12,07

6092



6092-0-00-XX-00-00-33-0
Solder mount in 1,12 mounting hole

SPECIFICATIONS

PIN MATERIAL:
Brass Alloy 360, 1/2 Hard
(Except where noted)

DIMENSION IN INCHES
TOLERANCES ON:
LENGTHS: ±0,13
DIAMETERS: ±0,05
ANGLES: ± 2°

ORDER CODE: XXXX - X - 00 - XX - 00 - 00 - XX - 0

BASIC PART #

SPECIFY PIN FINISH:

- 01 5,08µm TIN/LEAD OVER NICKEL
- ◇ 80 5,08µm TIN OVER NICKEL (RoHS)
- ◇ 15 0,25µm GOLD OVER NICKEL (RoHS)
- ◇ 21 0,51µm GOLD OVER NICKEL (RoHS)
- ◇ 34 1,27µm GOLD OVER NICKEL (RoHS)

