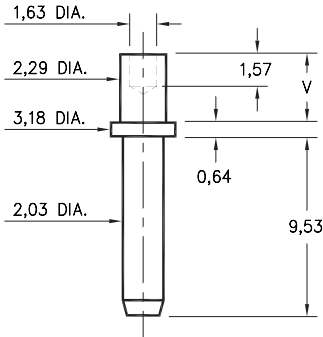


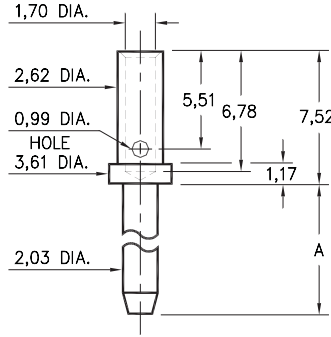
3231



Basic Part Number	Board Thickness	Length V
3231-2	1,57	2,39
3231-3	2,39	3,18
3231-4	3,18	3,96

3231-X-00-XX-00-00-08-0
Swage mount in 2,39 hole.

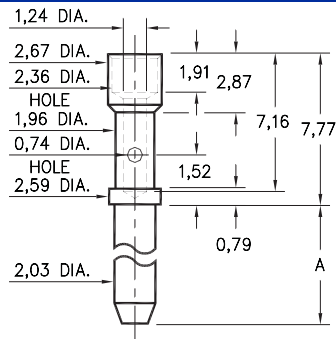
3609



Basic Part Number	Pin Length A
3609-1	5,08
3609-2	9,53
3609-3	12,7

3609-X-07-XX-00-00-08-0
#16A Crimp barrel

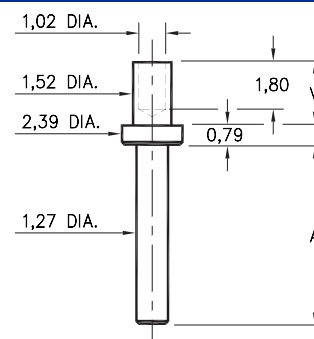
3601



Basic Part Number	Pin Length A
3601-1	5,08
3601-2	9,53
3601-3	12,7

3601-X-07-XX-00-00-08-0
#20A Crimp barrel

3133/3138/3152

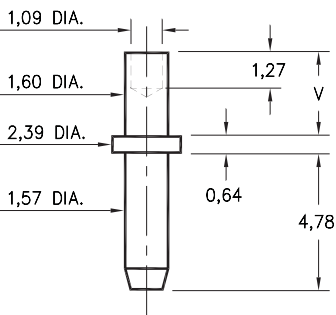


Basic Part Number	Pin Length A
3152-X	2,39
3133-X	5,56
3138-X	7,16

- X -	Board Thickness	Length V
1	0,79	1,60
2	1,57	2,39
3	2,39	3,18
4	3,18	3,96

31XX-X-00-XX-00-00-08-0
Specify board thickness
Swage mount in 1,63 hole

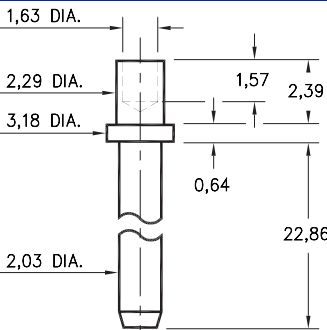
3144



Basic Part Number	Board Thickness	Length V
3144-1	0,79	1,35
3144-2	1,57	2,13
3144-3	2,39	2,92

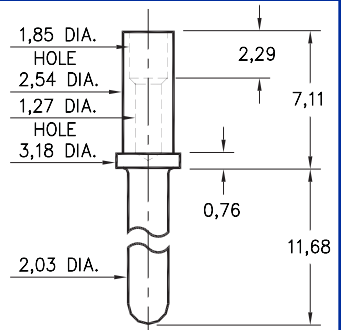
3144-X-00-XX-00-00-08-0
Swage mount in 1,70 hole.

3233



3233-2-00-XX-00-00-08-0
Swage mount in 2,39 hole.
For 1,57 thick board.

0520



0520-0-00-XX-00-00-03-0
Annealed
#18 Gage crimp barrel

SPECIFICATIONS

PIN MATERIAL:
Brass Alloy 360, 1/2 Hard
(Except Swage pins which are annealed)

DIMENSION IN INCHES
TOLERANCES ON:
LENGTHS: ±0,13
DIAMETERS: ±0,05
ANGLES: ± 2°



ORDER CODE: XXXX - X - 0X - XX - 00 - 00 - XX - 0

BASIC PART # →

SPECIFY PIN FINISH:

- 01 5,08µm TIN/LEAD OVER NICKEL
- ◇ 80 5,08µm TIN OVER NICKEL (RoHS)
- ◇ 15 0,25µm GOLD OVER NICKEL (RoHS)
- ◇ 21 0,51µm GOLD OVER NICKEL (RoHS)
- ◇ 34 1,27µm GOLD OVER NICKEL (RoHS)