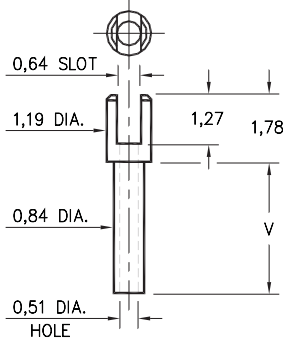


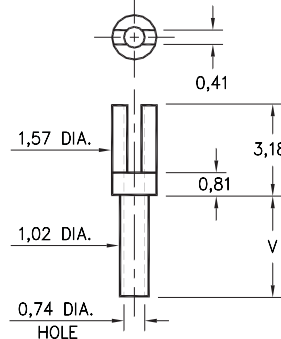
2104



- X -	Board Thickness	Length V
1	0,79	1,40
2	1,57	2,18
3	2,39	2,97
4	3,18	3,76

2104-X-01-XX-00-00-07-0
Swage mount in 0,91 hole

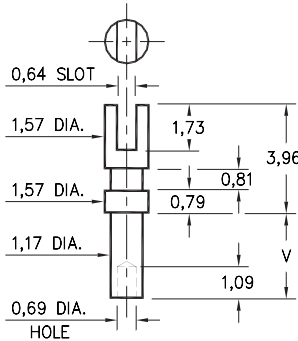
2112



- X -	Board Thickness	Length V
5	0,41	0,94
1	0,79	1,35
2	1,57	2,13
3	2,39	2,92
4	3,18	3,73

2112-X-01-XX-00-00-07-0
Swage mount in 1,09 hole

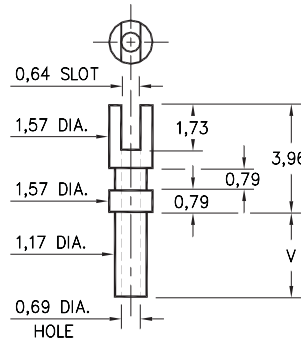
2105



- X -	Board Thickness	Length V
1	0,79	1,40
2	1,57	2,18
3	2,39	2,97
4	3,18	3,78

2105-X-01-XX-00-00-07-0
Swage mount in 1,32 hole

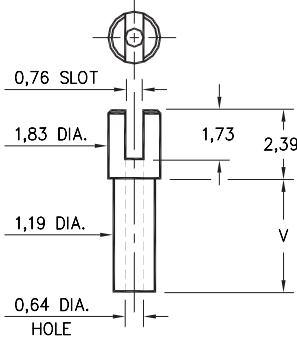
2103



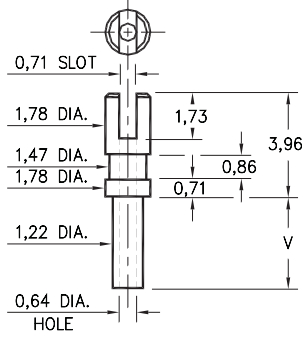
- X -	Board Thickness	Length V
1	0,79	1,4
2	1,57	2,18
3	2,39	2,97
4	3,18	3,78

2103-X-01-XX-00-00-07-0
Swage mount in 1,32 hole

2106/2107



2106-X-01-XX-00-00-07-0
Swage mount in 1,32 hole



2107-X-01-XX-00-00-07-0
Swage mount in 1,32 hole

- X -	Board Thickness	Length V
1	0,79	1,30
2	1,57	2,08
3	2,39	2,87
4	3,18	3,68

SPECIFICATIONS

PIN MATERIAL:
Brass Alloy 360, 1/2 Hard
Swage pins are annealed

DIMENSION IN INCHES
TOLERANCES ON:
LENGTHS: ±0,13
DIAMETERS: ±0,05
ANGLES: ± 2°

ORDER CODE: XXXX - X - 01 - XX - 00 - 00 - 07 - 0

BASIC PART #

SPECIFY PIN FINISH:

- 01 5,08µm TIN/LEAD OVER NICKEL
- ◇ 80 5,08µm TIN OVER NICKEL (RoHS)
- ◇ 44 7,62µm SILVER OVER COPPER (RoHS)
- ◇ 50 7,62µm ELECTRO-SOLDER (RoHS) (60/40 SnPb)

