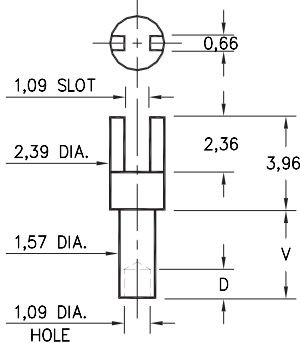


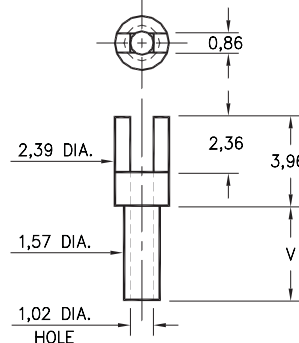
2315



2315-X-01-XX-00-00-07-0
Swage mount in 1,70 hole

- X -	Board Thickness	Length V	Depth D
1	0,79	1,14	1,02
2	1,57	2,39	
3	2,39	3,18	1,57
4	3,18	3,96	

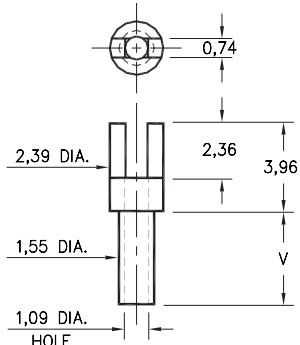
2302



2302-X-01-XX-00-00-07-0
Swage mount in 1,70 hole

- X -	Board Thickness	Length V
1	0,79	1,35
2	1,57	2,13
3	2,39	2,92
4	3,18	3,73

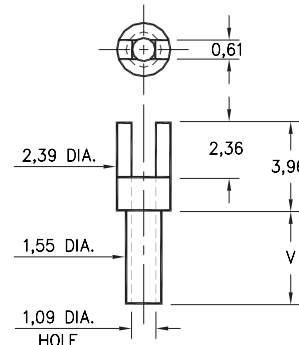
2352



2352-X-01-XX-00-00-07-0
Swage mount in 1,70 hole

- X -	Board Thickness	Length V
1	0,79	1,14
2	1,57	2,39
3	2,39	3,18
4	3,18	3,96

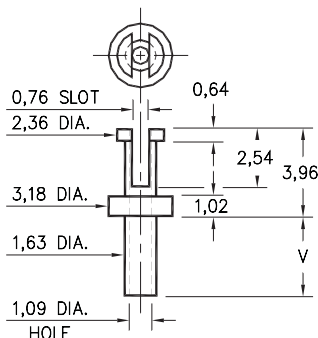
2362



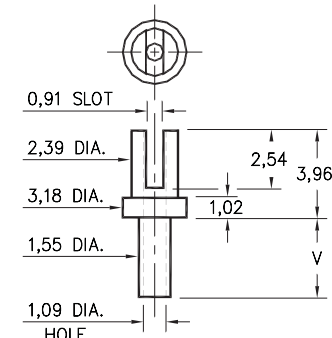
2362-X-01-XX-00-00-07-0
Swage mount in 1,70 hole

- X -	Board Thickness	Length V
5	0,41	0,94
1	0,79	1,35
2	1,57	2,13
3	2,39	2,92
4	3,18	3,73

2507/2526



2507-X-01-XX-00-00-07-0
Swage mount in 1,70 hole



2526-X-01-XX-00-00-07-0
Swage mount in 1,63 hole

- X -	Board Thickness	Length V
1	0,79	1,35
2	1,57	2,13
3	2,39	2,92
4	3,18	3,73

SPECIFICATIONS

PIN MATERIAL:
Brass Alloy 360, 1/2 Hard
Swage pins are annealed

DIMENSION IN INCHES
TOLERANCES ON:
LENGTHS: ±0,13
DIAMETERS: ±0,05
ANGLES: ± 2°

ORDER CODE: XXXX - X - 01 - XX - 00 - 00 - 07 - 0

BASIC PART #

SPECIFY PIN FINISH:

- 01 5,08µm TIN/LEAD OVER NICKEL
- ◇ 80 5,08µm TIN OVER NICKEL (RoHS)
- ◇ 44 7,62µm SILVER OVER COPPER (RoHS)
- ◇ 50 7,62µm ELECTRO-SOLDER (RoHS) (60/40 SnPb)

