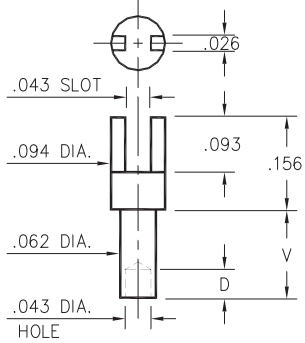


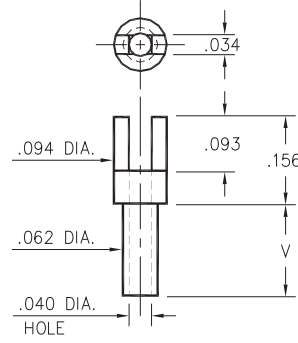
2315



2315-X-01-XX-00-00-07-0
Swage mount in .067 hole

| - X - | Board Thickness | Length V | Depth D |
|-------|-----------------|----------|---------|
| 1 | .031 | .045 | .040 |
| 2 | .062 | .094 | |
| 3 | .094 | .125 | .062 |
| 4 | .125 | .156 | |

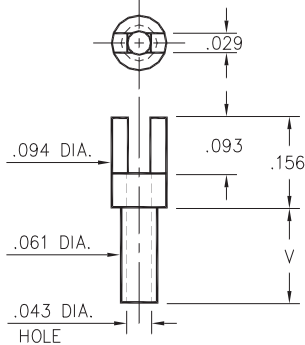
2302



2302-X-01-XX-00-00-07-0
Swage mount in .067 hole.

| - X - | Board Thickness | Length V |
|-------|-----------------|----------|
| 1 | .031 | .053 |
| 2 | .062 | .084 |
| 3 | .094 | .115 |
| 4 | .125 | .147 |

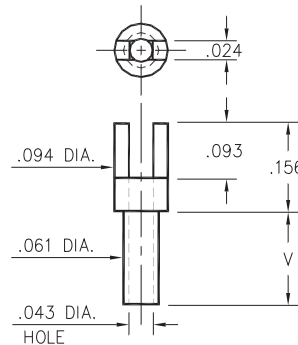
2352



2352-X-01-XX-00-00-07-0
Swage mount in .067 hole

| - X - | Board Thickness | Length V |
|-------|-----------------|----------|
| 1 | .031 | .045 |
| 2 | .062 | .094 |
| 3 | .094 | .125 |
| 4 | .125 | .156 |

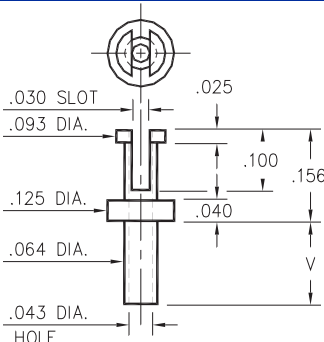
2362



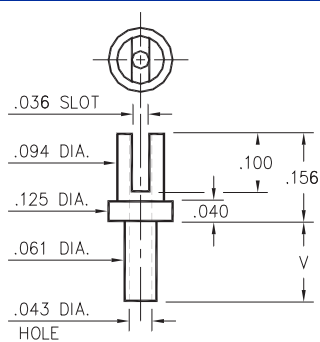
2362-X-01-XX-00-00-07-0
Swage mount in .067 hole

| - X - | Board Thickness | Length V |
|-------|-----------------|----------|
| 5 | .016 | .037 |
| 1 | .031 | .053 |
| 2 | .062 | .084 |
| 3 | .094 | .115 |
| 4 | .125 | .147 |

2507/2526



2507-X-01-XX-00-00-07-0
Swage mount in .067 hole



2526-X-01-XX-00-00-07-0
Swage mount in .064 hole

| - X - | Board Thickness | Length V |
|-------|-----------------|----------|
| 1 | .031 | .053 |
| 2 | .062 | .084 |
| 3 | .094 | .115 |
| 4 | .125 | .147 |

SPECIFICATIONS

PIN MATERIAL:
Brass Alloy 360, 1/2 Hard
Swage pins are annealed

DIMENSION IN INCHES
TOLERANCES ON:
LENGTHS: ±.005
DIAMETERS: ±.002
ANGLES: ± 2°

ORDER CODE: XXXX - X - 01 - XX - 00 - 00 - 07 - 0

BASIC PART #

SPECIFY PIN FINISH:

- 01 200µ" TIN/LEAD OVER NICKEL
- ◇ 80 200µ" TIN OVER NICKEL (RoHS)
- ◇ 44 300µ" SILVER OVER COPPER (RoHS)
- ◇ 50 300µ" ELECTRO-SOLDER (RoHS) (60/40 SnPb)

