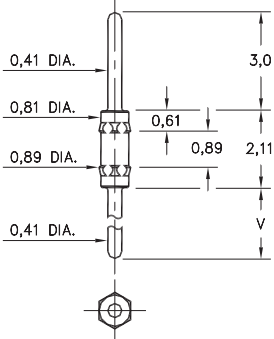


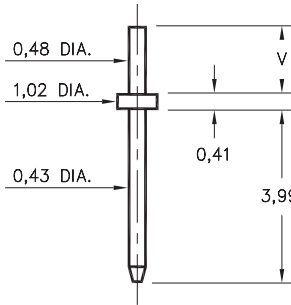
4006



| Basic Part Number | Length V |
|-------------------|----------|
| 4006-0 | 3,0 |
| 4006-1 | 4,78 |
| 4006-2 | 7,32 |

4006-X-00-XX-00-00-03-0
Hex Press-fit in 0,86 mounting hole

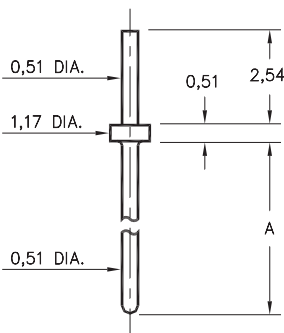
3121



| Basic Part Number | Substrate Thickness | Length V |
|-------------------|---------------------|----------|
| 3121-1 | 0,64 | 1,55 |
| 3121-2 | 1,02 | 1,91 |

3121-X-00-XX-00-00-08-0
Solder mount in 0,58 mounting hole
Material is annealed.

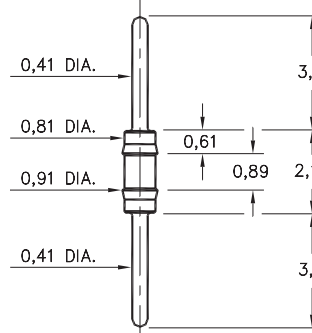
3128



| Basic Part Number | Length A |
|-------------------|----------|
| 3128-1 | 6,35 |
| 3128-2 | 10,8 |
| 3128-3 | 13,34 |
| 3128-4 | 14,22 |
| 3128-5 | 23,62 |

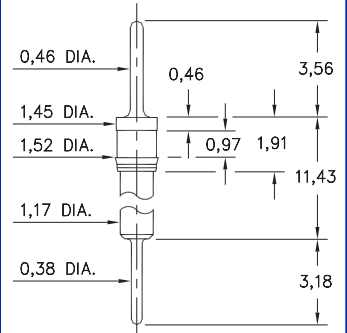
3128-X-00-XX-00-00-08-0
Solder mount in 0,61 min. mounting hole

3006



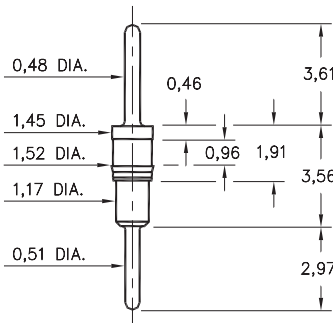
3006-0-00-XX-00-00-03-0
Press-fit in 0,86 mounting hole

8885



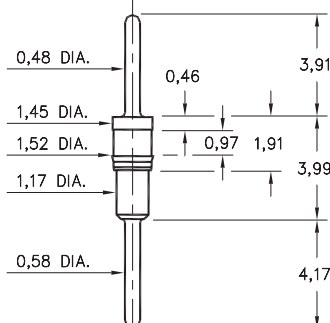
8885-0-00-XX-00-00-03-0
Press-fit in 1,45 mounting hole

6218



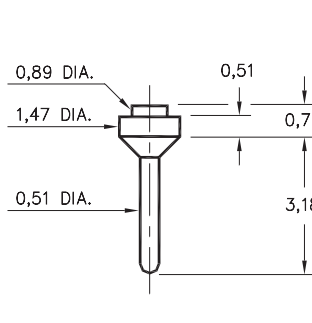
6218-0-00-XX-00-00-03-0
Press-fit in 1,45 mounting hole

5012



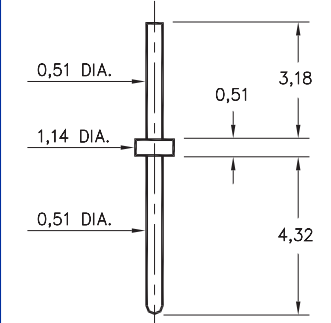
5012-0-00-XX-00-00-03-0
Press-fit in 1,45 mounting hole

0508



0508-0-00-XX-00-00-03-0
Surface Mount

9081



9081-0-00-XX-00-00-08-0
Solder mount in 0,61 mounting hole

SPECIFICATIONS

PIN MATERIAL:
Brass Alloy 360, 1/2 Hard
(Except where noted)

DIMENSION IN INCHES
TOLERANCES ON:
LENGTHS: ±0,13
DIAMETERS: ±0,05
ANGLES: ± 2°

ORDER CODE: XXXX - X - 0X - XX - 00 - 00 - XX - 0

BASIC PART #

SPECIFY PIN FINISH:

- 01 5,08µm TIN/LEAD OVER NICKEL
- ◇ 80 5,08µm TIN OVER NICKEL (RoHS)
- ◇ 15 0,25µm GOLD OVER NICKEL (RoHS)
- ◇ 21 0,51µm GOLD OVER NICKEL (RoHS)
- ◇ 34 1,27µm GOLD OVER NICKEL (RoHS)

