

4

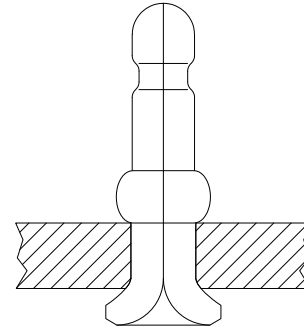
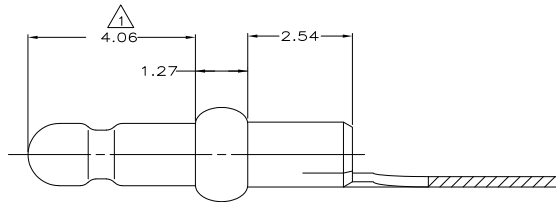
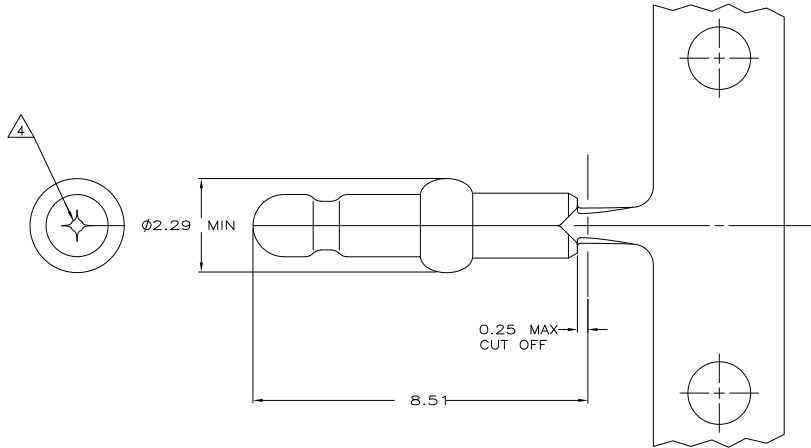
3

2

1

THIS DRAWING IS UNPUBLISHED. RELEASED FOR PUBLICATION.
 © COPYRIGHT BY TYCO ELECTRONICS CORPORATION. ALL INTERNATIONAL RIGHTS RESERVED.

LOC	DIST	REVISIONS					
		F	LN	DESCRIPTION	DATE	BY	APPD
CM	52		T1	REVISED PER ECO-09-003230	10FEB09	HMR	KR



- △ 0.00076 MIN GOLD PLATING IN THIS AREA WITH 0.00381 MIN MATTE TIN LEAD ON THE REMAINDER, BOTH OVER 0.00122 MIN NICKEL UNDERPLATE.
- 2 FITS 1.70 - 1.85 DIAMETER HOLE IN A 1.57 PRINTED CIRCUIT BOARD.
- 3 PARTS TO COMPLY WITH AMP SOLDERABILITY SPECIFICATION 109-11-3.
- △ 4 0.05 - 0.25 DIAMETER OPENING REQUIRED IN TIP OF PIN.
- 5 APPLICATOR FEED: 8.00 - 8.26
- △ 6 0.00076 MIN GOLD PLATING IN THIS AREA WITH 0.00381 MIN MATTE TIN ON THE REMAINDER, BOTH OVER 0.00122 MIN NICKEL UNDERPLATE.

MM	IN	MM	IN	MM	IN	MM	IN
0.13	.005	1.70	.067	8.00	.315	-	-
0.05	.002	1.57	.062	4.06	.160	-	-
0.00381	0.000150	1.47	.058	2.54	.100	-	-
0.00127	0.000050	1.27	.050	2.29	.090	8.51	.335
0.00076	0.000030	0.25	.010	1.85	.073	8.26	.325

CONVERSION TABLE

METRIC

THIS DRAWING IS A CONTROLLED DOCUMENT.

DRW	T. BECK	8-14-97
CHK	SWING	8-14-97
APPD	A. BRIDGICK	9-10-97
PRODUCT SPEC	108-1025	
APPLICATION SPEC	114-1008	
WEIGHT	-	

MATERIAL: 0.25 PH BRZ
FINISH: SEE TABLE

SIZE: A2
CAGE CODE: 00779
DRAWING NO: 60824
CUSTOMER DRAWING

Tyco Electronics Corporation
Harrisburg, PA 17105-3608

PIN, .058 DIAMETER, PHOSPHOR BRONZE, CLINCH FIT, P.C. CONTACT

SCALE: 15:1 SHEET 1 of 1 REV T1

OBSOLETE	△ 6	3-60824-2
OBSOLETE	PRE TIN	3-60824-1
OBSOLETE	△ 4	60824-2
	PRE TIN	60824-1
	FINISH	PART NUMBER

1471-9 (1/08)

60824

A