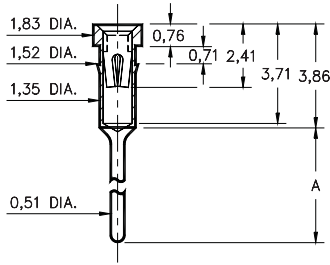


### 1005/1013/8898

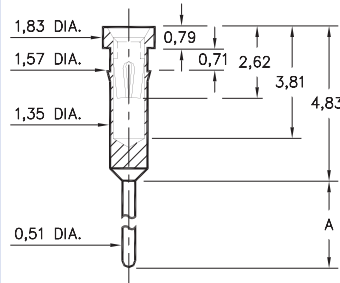


Basic Part Number	Length A
1005-0	3,51
1013-0	4,19
8898-0	5,69

NOTE: 8898 is not annealed & not suitable for auto-clinching

**XXXX-0-15-XX-3X-XX-04-0**  
Press-fit in 1,45 mounting hole  
1/4 hard brass shell for auto-clinching

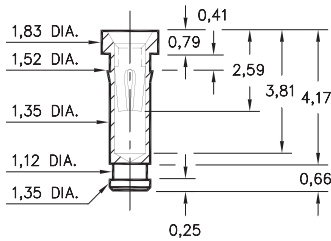
### 0145/0146



Basic Part Number	Length A
0145-0	7,62
0146-0	10,41

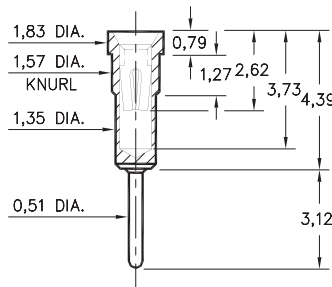
**014X-0-15-XX-30-XX-04-0**  
Press-fit in 1,5 mounting hole

### 4378



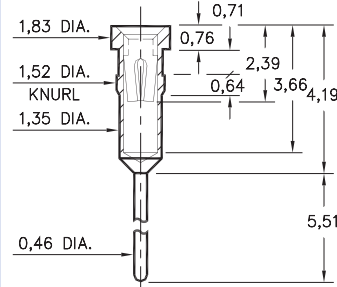
**4378-0-15-XX-30-XX-10-0**  
Press-fit in 1,45 mounting hole

### 0556



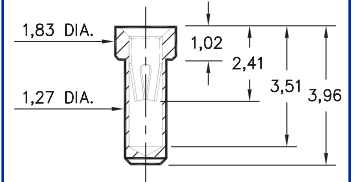
**0556-0-15-XX-30-XX-04-0**  
Press-fit in 1,5 mounting hole

### 1103



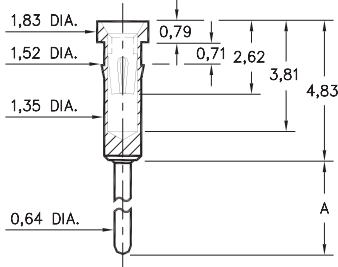
**1103-0-15-XX-30-XX-04-0**  
Press-fit in 1,45 mounting hole

### 9234



**9234-0-15-XX-30-XX-10-0**  
Solder mount in 1,32 min. mounting hole

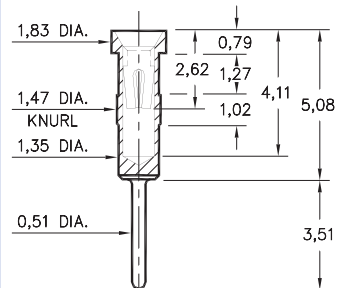
### 0136/37/38/39/41/48/52



Basic Part Number	Length A
0136-0	30,86
0137-0	14,22
0138-0	5,33
0139-0	16,13
0141-0	17,78
0148-0	11,56
0152-0	10,41

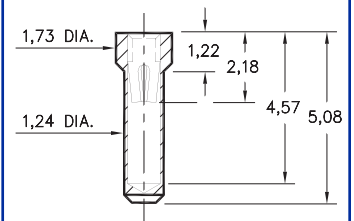
**01XX-0-15-XX-30-XX-04-0**  
Press-fit in 1,45 mounting hole

### 0447



**0447-0-15-XX-30-XX-04-0**  
Press-fit in 1,42 mounting hole

### 5660



**5660-0-15-XX-30-XX-10-0**  
Solder mount in 1,3 min. mounting hole

#### SPECIFICATIONS

**SHELL MATERIAL:**  
Brass Alloy 360, 1/2 Hard

**CONTACT MATERIAL:**  
Beryllium Copper Alloy 172, HT

**DIMENSION IN INCHES TOLERANCES ON:**  
LENGTHS:  $\pm 0,13$   
DIAMETERS:  $\pm 0,05$   
ANGLES:  $\pm 2^\circ$

ORDER CODE: **XXXX - X - 15 - XX - XX - XX - XX - 0**

BASIC PART #

SPECIFY SHELL FINISH:

- 01 5,08 $\mu$ m TIN/LEAD OVER NICKEL
- ◇ 80 5,08 $\mu$ m TIN OVER NICKEL (RoHS)
- ◇ 15 0,25 $\mu$ m GOLD OVER NICKEL (RoHS)

SPECIFY CONTACT FINISH:

- 02 2,54 $\mu$ m TIN/LEAD OVER NICKEL
- ◇ 84 2,54 $\mu$ m TIN OVER NICKEL (RoHS)
- ◇ 27 0,76 $\mu$ m GOLD OVER NICKEL (RoHS)



SELECT CONTACT

#30 or #32 CONTACT (DATA ON PAGES 218 & 219)