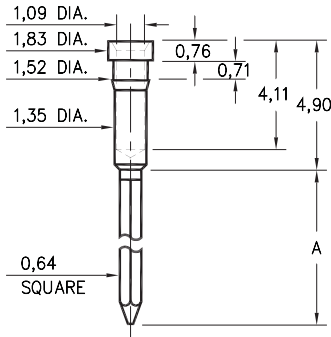


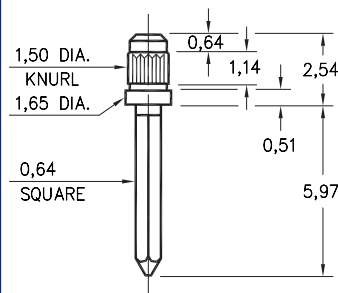
**1030 ⇒ 1032**



Basic Part Number	# of Wraps	Wrap Length A
1032-1	1	6,60
1031-2	2	9,14
1030-3	3	12,7

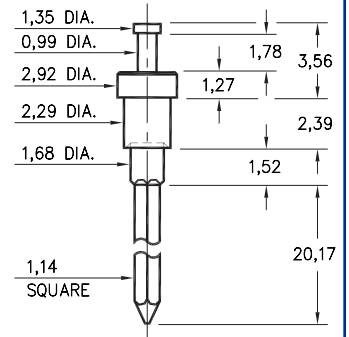
**103X-X-05-XX-00-00-01-0**  
Press-fit in 1,45 mounting hole

**1216**



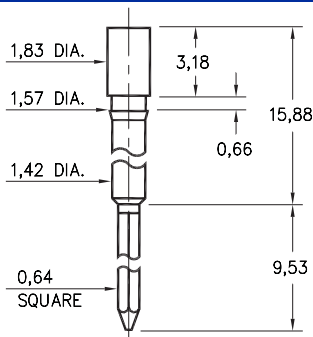
**1216-0-05-XX-00-00-01-0**  
Press-fit in 1,42 mounting hole

**1095**



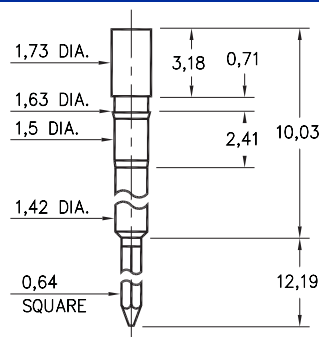
**1095-0-05-XX-00-00-01-0**  
Swage mount in 2,39 hole  
For 1,57 thick board

**1214**



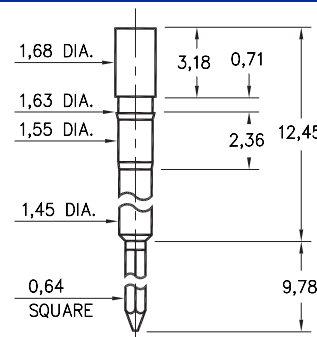
**1214-0-05-XX-00-00-01-0**  
Press-fit in 1,50 mounting hole

**1212**



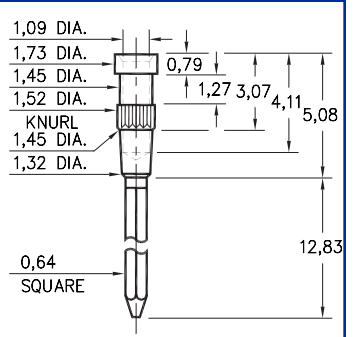
**1212-0-05-XX-00-00-01-0**  
Press-fit in 1,55 mounting hole

**1213**



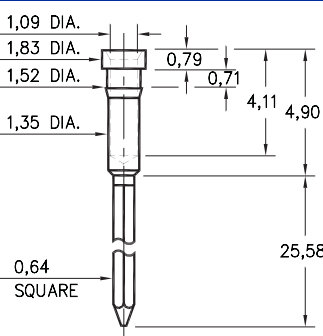
**1213-0-05-XX-00-00-01-0**  
Press-fit in 1,55 mounting hole

**0318**



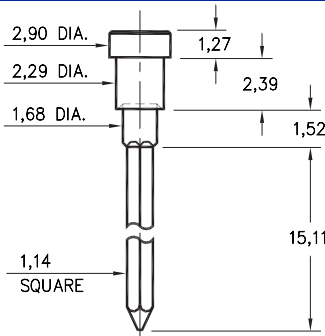
**0318-3-05-XX-00-00-01-0**  
Press-fit in 1,45 mounting hole

**1302**



**1302-0-05-XX-00-00-01-0**  
Press-fit in 1,45 mounting hole

**1097**



**1097-0-05-XX-00-00-01-0**  
Swage mount in 2,39 hole  
for 1,57 thick board

**SPECIFICATIONS**

**PIN MATERIAL:**  
Brass Alloy 360, 1/2 Hard  
Swage pins are annealed

**DIMENSION IN INCHES**  
**TOLERANCES ON:**  
LENGTHS: ±0,13  
DIAMETERS: ±0,05  
ANGLES: ± 2°

**ORDER CODE: XXXX - X - 05 - XX - 00 - 00 - 01 - 0**

**BASIC PART #**

**SPECIFY PIN FINISH:**

- 01 5,08µm TIN/LEAD OVER NICKEL
- ◇ 80 5,08µm TIN OVER NICKEL (RoHS)
- ◇ 15 0,25µm GOLD OVER NICKEL (RoHS)
- ◇ 21 0,51µm GOLD OVER NICKEL (RoHS)

