

4

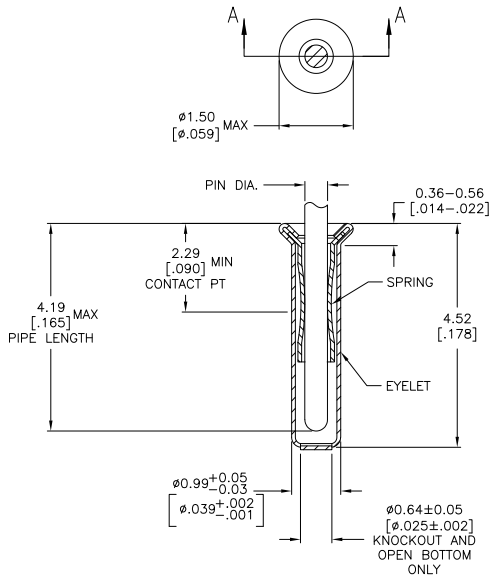
3

2

1

THIS DRAWING IS UNPUBLISHED. RELEASED FOR PUBLICATION. ALL RIGHTS RESERVED.

LOC	DIST	REVISIONS		
F	LNK	DESCRIPTION	DATE	BY
AA2		REVISED PER ECO-11-004835	11MAR11	RK HMR



SECTION A-A

1. TIN PER MIL-T-10727 OR TIN LEAD .00254 [0.000100] MIN THK.
 2. GOLD PER MIL-G-45204, TYPE II, 0.00076 [0.000030] MIN THK OVER NICKEL PER QQ-N-290 0.00028 [0.000011] MIN THK ON CONTACT AREA.
 3. GOLD FLASH PER MIL-G-45204, TYPE II, 0.13μm [0.000005] MIN THK. OVER NICKEL PLATE PER QQ-N-290 0.51μm-1.52μm [0.000020-0.000060] EXT THK.
4. RECOMMENDED HOLE SIZE, PLATED OR UNPLATED:
 MACHINE INSERTION: 1.04±0.03 [0.041±0.001]
 HAND INSERTION: 1.04 +0.10/-0.00 [0.041+0.004/-0.000]
5. APPLICATION TOOL PART NUMBER:
 MACHINE NO. 682127-2
 INSERTION HEAD NO. 682039-1
6. TO INSURE PROPER SPRING TENSION DO NOT EXCEED A 0.10 [0.004] DIFFERENCE IN PIN DIA WHEN CHANGING TO A SMALLER PIN.
7. BOTTOM PLUG KNOCKOUT TOOL PART NUMBER 69729 WITH TIP PART NUMBER 69728.
8. MATERIAL; SPRING: BERYLLIUM COPPER (QQ-C-533)
 EYELET: COPPER (QQ-C-576)

SUPSD BY	OBSOLETE	OPEN	0.33-0.51	[0.013-0.020]	TIN	△	2-332095-6
1-332095-9		KNOCKOUT	0.41-0.48	[0.016-0.019]			2-332095-5
	OBSOLETE	CLOSED					2-332095-4
	OBSOLETE	OPEN	0.33-0.51	[0.013-0.020]	GOLD	△	2-332095-3
		KNOCKOUT					2-332095-2
		CLOSED					2-332095-1
SUPSD BY 2-332095-6		OPEN	0.33-0.41	[0.013-0.016]	TIN	△	2-332095-0
	OBSOLETE	KNOCKOUT	0.33-0.51	[0.013-0.020]			1-332095-9
SUPSD BY 2-332095-4		CLOSED					1-332095-8
SUPSD BY 2-332095-3		OPEN	0.33-0.41	[0.013-0.016]	GOLD	△	1-332095-7
SUPSD BY 2-332095-2		KNOCKOUT					1-332095-6
SUPSD BY 2-332095-1		CLOSED					1-332095-5
SUPSD BY 1-332095-2		CLOSED	0.33-0.51	[0.013-0.020]	TIN	△	1-332095-2
	OBSOLETE		0.33-0.41	[0.013-0.016]			332095
		BOTTOM TYPE			EYELET	SPRING	PART NO
					FINISH		

THIS DRAWING IS A CONTROLLED DOCUMENT.		DATE	4-5-91
DIMENSIONS:	mm [INCHES]	DESIGNER	R. VALLEY
		CHK	
		DATE	
		PRODUCT SPEC	
		APPLICATION SPEC	
		WEIGHT	
		SIZE	A2
		ORIG CODE	C=332095
		DRAWING NO	
		RESTRICTED TO	
		CUSTOMER DRAWING	
		SCALE	20:1
		SHEET	1 of 1
		REV	AA2