

4

3

2

1

THIS DRAWING IS UNPUBLISHED.

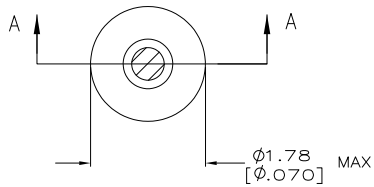
RELEASED FOR PUBLICATION

ALL RIGHTS RESERVED.

LOC
GP 00

REVISIONS

P	LTR	DESCRIPTION	DATE	DWN	APVD
	AG2	REVISED PER ECO-11-004835	11MAR11	RK	HMR



1. TIN PER MIL-T-10727 OR TIN LEAD .00254 [.000100] MIN THK.
2. GOLD PER MIL-G-45204, TYPE II, 0.00076 [.000030] MIN THK OVER NICKEL PER QQ-N-290 0.00028 [.000011] MIN THK ON CONTACT AREA.
3. GOLD FLASH PER MIL-G-45204, TYPE II, 0.13 μ m [.000005] MIN THK. OVER NICKEL PLATE PER QQ-N-290 0.51 μ m-1.52 μ m [.000020-.000060] EXT THK.
4. GOLD PER MIL-G-45204, TYPE II, 0.00127 [.000050] MIN THK.
5. GOLD PER MIL-G-45204, TYPE II, 0.00127 [.000050] MIN THK OVER NICKEL PER QQ-N-290 0.00127 [.000050] MIN THK ON CONTACT AREA.

6. RECOMMENDED HOLE SIZE, PLATED OR UNPLATED:

MACHINE INSERTION: 1.32 $\begin{matrix} +0.08 \\ -0.05 \end{matrix}$ [.052 $\begin{matrix} +.003 \\ -.002 \end{matrix}$]HAND INSERTION: 1.32 $\begin{matrix} +0.10 \\ -0.00 \end{matrix}$ [.052 $\begin{matrix} +.004 \\ -.000 \end{matrix}$]

7. APPLICATION TOOL PART NUMBER:

MACHINE NO. 682127-3

INSERTION HEAD NO. 682039-2

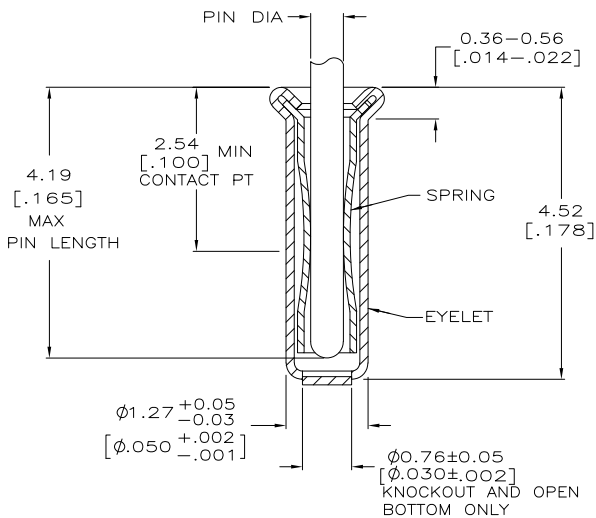
8. TO INSURE PROPER SPRING TENSION DO NOT EXCEED A 0.10 [.004] DIFFERENCE IN PIN DIA WHEN CHANGING TO A SMALLER PIN.

9. BOTTOM PLUG KNOCKOUT TOOL PART NUMBER 69729 WITH TIP PART NUMBER 69728.

10. TIN PER ASTM B545, 0.00254 [.000100] MIN THK.

11. MATERIAL: SPRING: BERYLLIUM COPPER QQ-C-533
-
- EYELET: COPPER, QQ-C-576

SUSPSD BY 50462-8	CLOSED OPEN	RECOMMENDED PIN DIA	TIN	TIN	6-50462-7
			10	10	
OBSOLETE	CLOSED	0.36-0.66 [.014-.026]	GOLD	GOLD	1-50462-5
			4	5	1-50462-4
OBSOLETE	KNOCKOUT	0.36-0.66 [.014-.026]	TIN	GOLD	50462-8
			1	2	50462-7
OBSOLETE	OPEN	0.36-0.66 [.014-.026]	GOLD	GOLD	50462-6
			3	2	50462-5
OBSOLETE	OPEN	0.36-0.66 [.014-.026]	TIN	TIN	50462-4
			1	1	50462-2
OBSOLETE	OPEN	0.36-0.66 [.014-.026]	GOLD	GOLD	50462-2
			3	2	50462
BOTTOM TYPE		RECOMMENDED PIN DIA	EYELET	SPRING	PART NO
			FINISH		



SECTION A-A

THIS DRAWING IS A CONTROLLED DOCUMENT.		DWN R. TALLEY	4-5-91		
DIMENSIONS: mm [INCHES]		CHK -	-		
TOLERANCES UNLESS OTHERWISE SPECIFIED:		APVD -	-	NAME	
0 PLC ± -		PRODUCT SPEC -	-	MINIATURE SPRING SOCKET ASSEMBLY, SERIES 2	
1 PLC ± -		APPLICATION SPEC -	-	SIZE	CAGE CODE
2 PLC ± -		WEIGHT -	-	A3	00779
3 PLC ± 0.20 [.008]		CUSTOMER DRAWING	-	DRAWING NO	C=50462
4 PLC ± -		SCALE	20:1	SHEET	1 of 1
ANGLES ± -		REV	AG2		
MATERIAL					
FINISH					