

4

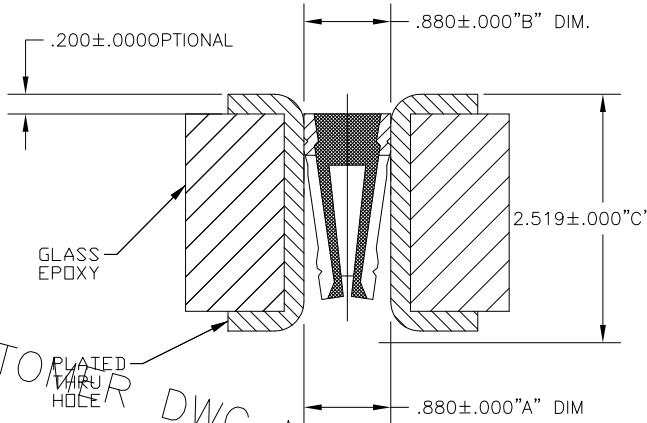
3

2

1

THIS DRAWING IS UNPUBLISHED. RELEASED FOR PUBLICATION ALL RIGHTS RESERVED. LOC AD DIST 00 REVISIONS

CONVERSION CHART		CONVERSION CHART	
INCH	MM	INCH	MM
.000	0,00	.057	1,45
.005	0,13		
.0003	0,007	.0625	1,587
.0005	0,012		
.0005	0,012	.100	2,54
.001	0,02	.140	3,55
.002	0,05	.300	7,62
.010	0,25	.400	10,16
.020	0,51	.600	15,24
.030	0,78		
.030	0,76		



- FEATURES:**
- QUALIFIED TO MIL-S-8350/6 (M8134 SERIES ONLY).
  - ZERO SOCKET PROFILE.
  - PRECISION-MACHINED, TAPERED-ENTRY, FOUR FINGER CONTACT. RETAINS MINIMUM COMPONENT LEAD LENGTHS. MAXIMUM HEAT DISSIPATION. SOLDERLESS, GAS-TIGHT, PRESS-FIT INSERTION. INSTALLATION RATE-30,000 CONTACTS MINIMUM (LOADED AND PRESSED) PER HOUR. REMOVES ARTWORK DESIGN RESTRICTIONS.

- HOLTITE® CONTACT SOCKET REEL:**
- AVAILABLE IN ALL STANDARD DIP SOCKET PATTERNS MOUNTED ON DISPOSABLE MYLAR CARRIER.
  - CONTACTS PACKAGED 5,000 PIECES PER REEL.
  - EASILY INSTALLED WITH HAND TOOL IN AUGAT PROTOTYPING KIT (399-HK SERIES) OR WITH BENCHTOP PRESSES.
  - CONTACT AVAILABLE IN UNIVERSAL .100" APART X .300", .400" AND .600" WIDE ROWS FOR CUSTOM APPLICATIONS (CAN BE CUT TO DESIRED PATTERN SIZE).

INCH	MM	INCH	MM
.000	0,00	.057	1,45
.005	0,13		
.0003	0,007	.0625	1,587
.0005	0,012		
.0005	0,012	.100	2,54
.001	0,02	.140	3,55
.002	0,05	.300	7,62
.010	0,25	.400	10,16
.020	0,51	.600	15,24
.030	0,78		
.030	0,76		

CUSTOMER DWG No 147699 FOR HOLTITE PRODUCTS

NOTES:  
1. INTERPRET DRAWING PER ASME Y14.5M-1994.

**PART NUMBERS/STANDARD CONFIGURATIONS:**

PART NUMBER	CONTACT MATERIAL & FINISH	RECOMMENDED LEAD SIZE	RECOMMENDED PRIMARY DRILL SIZE	A DIM. FINISHED PLATED-THRU HOLE SIZE	B DIM CONTACT DIAMETER	C DIM MAXIMUM PROFILE	BOARD THICKNESS	PLATED-THRU HOLE FINISH
8134-HC-6P2	CU ALLOY, AU PLATE OVER NI	ROUND LEAD Ø.020-Ø.030	.0635	.058 ±.002	.0625 ±.0005	.140 UNRECESSED	.030 MIN.	.0003-.0005 ELECTRO-DEPOSITED TIN/LEAD OVER .001 MIN. THICKNESS ELECTRO-DEPOSITED COPPER PLATE.
8134-HC-6P3	CU ALLOY, SN PLATE OVER CU							

THIS DRAWING IS A CONTROLLED DOCUMENT.

DIMENSIONS: INCHES	TOLERANCES UNLESS OTHERWISE SPECIFIED:	DWN CED 4-25-77	 TE Connectivity
	0 PLC ± -	CHK RH 5-10-77	
	1 PLC ± -	APVD RH 5-10-77	
	2 PLC ± -	NAME	
MATERIAL	FINISH	PRODUCT SPEC	CONTACT PLATED (REF AUGAT 8134-HC-6P2)
		APPLICATION SPEC	SIZE CAGE CODE DRAWING NO
		WEIGHT	A3 00779 C-6-1437514-8
		CUSTOMER DRAWING	RESTRICTED TO
			SCALE NTS SHEET 1 of 1 REV A1