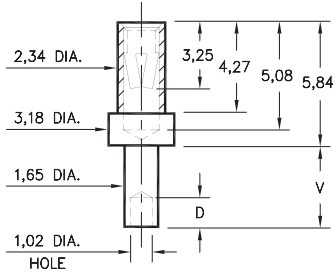


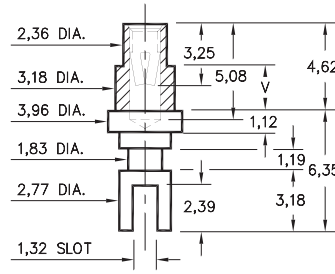
0344



Basic Part Number	Board Thickness	Length V	Depth D
0344-1	0,78	1,57	1,02
0344-2	1,57	2,39	1,57
0344-3	2,39	3,18	1,57
0344-4	3,18	3,96	1,57

0344-X-19-XX-34-XX-10-0
Swage mount in 1,70 hole

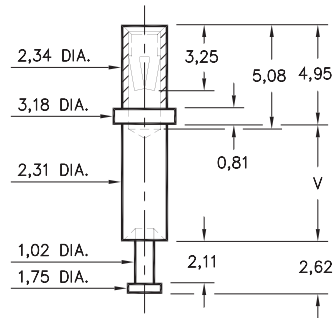
0349



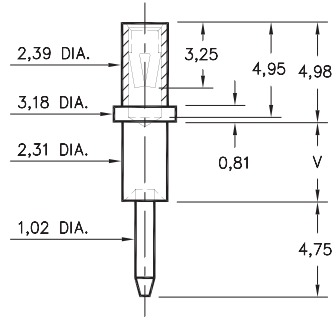
Basic Part Number	Board Thickness	Length V
0349-2	1,57	2,39
0349-3	2,39	3,18
0349-4	3,18	3,96

0349-X-31-XX-34-XX-10-0
Swage mount in 3,28 hole

0323/0324



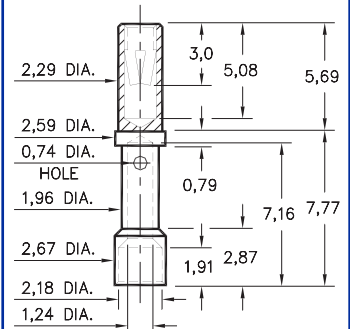
0323-X-15-XX-34-XX-10-0
Swage mount in 2,39 hole



0324-X-15-XX-34-XX-10-0
Swage mount in 2,39 hole

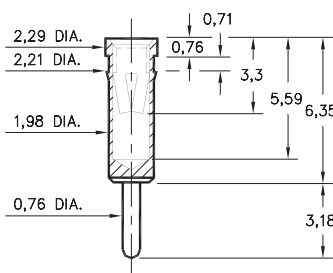
Basic Part Number	Board Thickness	Length V
032X-1	0,79	1,57
032X-2	1,57	2,39
032X-3	2,39	3,18
032X-4	3,18	3,96
032X-5	4,78	5,56

0348



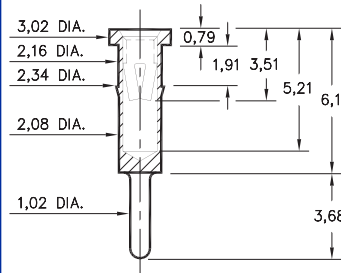
0348-0-33-XX-34-XX-10-0
#20A Crimp Barrel

0405



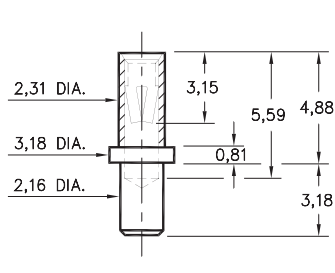
0405-0-15-XX-34-XX-04-0
Press-fit in 2,13 mounting hole

0336



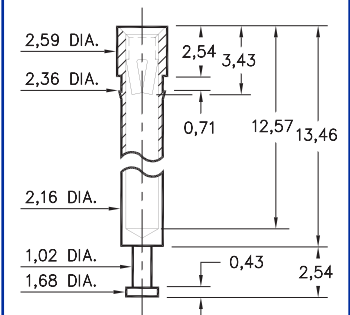
0336-0-15-XX-34-XX-04-0
Press-fit in 2,26 mounting hole

0322



0322-0-15-XX-34-XX-10-0
Solder mount in 2,26 min. mounting hole

0325



0325-0-15-XX-34-XX-10-0
Press-fit in 2,29 mounting hole

SPECIFICATIONS

SHELL MATERIAL:
Brass Alloy 360, 1/2 Hard

CONTACT MATERIAL:
Beryllium Copper Alloy 172, HT

DIMENSION IN INCHES
TOLERANCES ON:
LENGTHS: ±0,13
DIAMETERS: ±0,05
ANGLES: ± 2°

ORDER CODE: XXXX - X - XX - XX - 34 - XX - XX - 0

BASIC PART #

SPECIFY SHELL FINISH:
01 5,08µm TIN/LEAD OVER NICKEL
◇ 80 5,08µm TIN OVER NICKEL (RoHS)
◇ 15 0,25µm GOLD OVER NICKEL (RoHS)

SPECIFY CONTACT FINISH:
01 5,08µm TIN/LEAD OVER NICKEL
◇ 80 5,08µm TIN OVER NICKEL (RoHS)
◇ 27 0,76µm GOLD OVER NICKEL (RoHS)



CONTACT

#34 CONTACT (DATA ON PAGE 222)