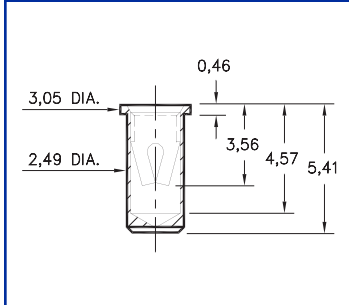
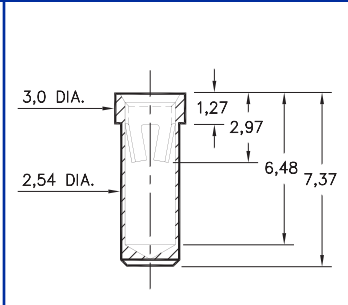


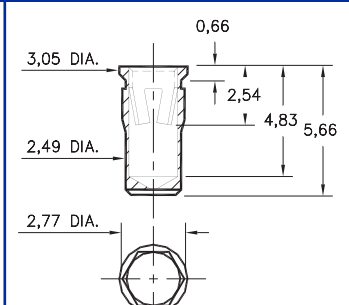
0364 0363 0365 0366



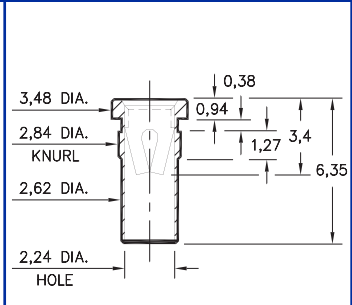
0364-0-15-XX-13-XX-10-0
Solder mount in 2,54 min. mounting hole
Also available on 16mm wide carrier tape: 1,300 parts per 330mm reel.
Order as: 0364-0-57-XX-13-XX-10-0



0363-0-15-XX-23-XX-10-0
Solder mount in 2,59 min. mounting hole

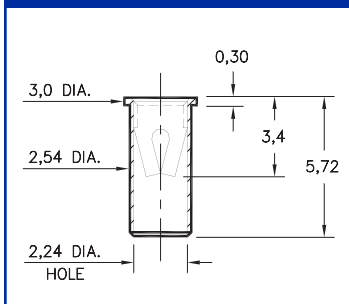


0365-0-15-XX-23-XX-10-0
Hex press-fit in 2,67 plated thru hole

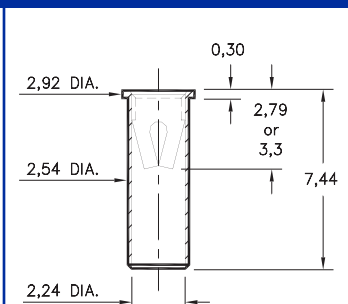


0366-0-15-XX-13-XX-10-0
Press-fit in 2,77 mounting hole

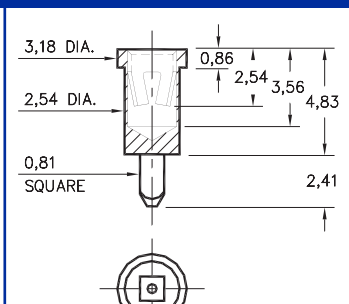
0372 0362 0367 9324



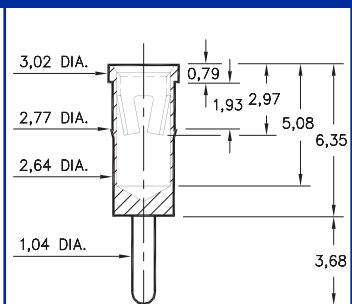
0372-0-15-XX-13-XX-10-0
Solder mount in 2,59 min. mounting hole
Also available on 24mm wide carrier tape: 950 parts per 330mm reel.
Order as: 0372-0-57-XX-13-XX-10-0



0362-0-15-XX-X3-XX-10-0
Solder mount in 2,59 min. mounting hole

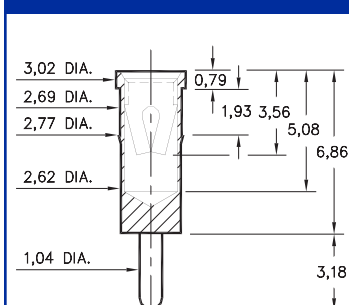


0367-0-15-XX-23-XX-10-0
Square press-fit in 1,02 plated thru hole

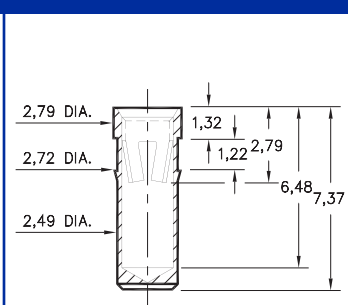


9324-0-15-XX-23-XX-04-0
Press-fit in 2,69 mounting hole

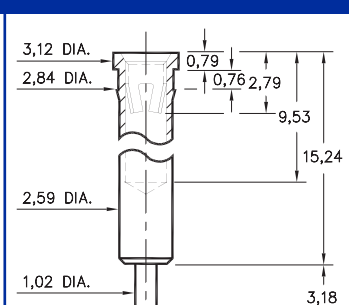
0492 0381 4034 3044



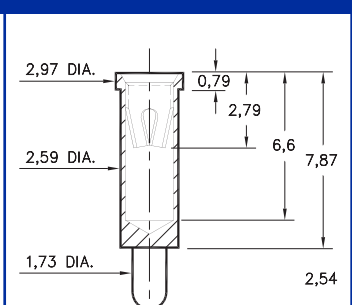
0492-0-15-XX-13-XX-04-0
Press-fit in 2,69 mounting hole



0381-0-15-XX-23-XX-10-0
Press-fit in 2,64 mounting hole



4034-0-15-XX-23-XX-04-0
Press-fit in 2,77 mounting hole



3044-0-15-XX-23-XX-04-0
Solder mount in 2,64 min. mounting hole

<p>SPECIFICATIONS</p> <p>SHELL MATERIAL: Brass Alloy 360, 1/2 Hard</p> <p>CONTACT MATERIAL: Beryllium Copper Alloy 172, HT</p> <p>DIMENSION IN INCHES TOLERANCES ON: LENGTHS: ±0,13 DIAMETERS: ±0,05 ANGLES: ± 2°</p>	<p>ORDER CODE: XXXX - X - 15 - XX - XX - XX - XX - 0</p>	
	<p>BASIC PART # →</p> <p>SPECIFY SHELL FINISH:</p> <p>01 5,08µm TIN/LEAD OVER NICKEL</p> <p>◇ 80 5,08µm TIN OVER NICKEL (RoHS)</p> <p>◇ 15 0,25µm GOLD OVER NICKEL (RoHS)</p>	<p>SPECIFY CONTACT FINISH:</p> <p>01 5,08µm TIN/LEAD OVER NICKEL</p> <p>◇ 80 5,08µm TIN OVER NICKEL (RoHS)</p> <p>◇ 27 0,76µm GOLD OVER NICKEL (RoHS)</p>
	<p align="center">SELECT CONTACT</p> <p align="center">#13 or #23 CONTACT (DATA ON PAGES 224 & 225)</p>	



Downloaded from Elcodis.com electronic components distributor