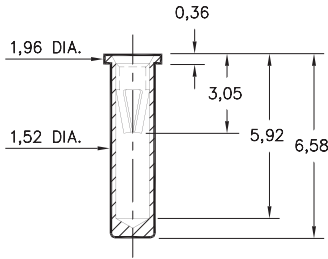


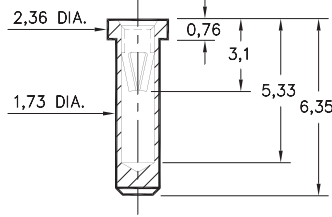
### 0295



#### 0295-0-15-XX-06-XX-10-0

Solder mount in 1,60 min. mounting hole  
Also available on 24mm wide carrier  
tape: 1,000 parts per 330mm reel.  
Order as: 0295-0-57-XX-06-XX-10-0

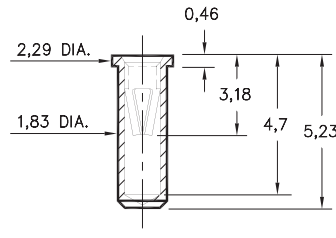
### 0292



#### 0292-0-15-XX-06-XX-10-0

Solder mount in 1,8 min.  
mounting hole

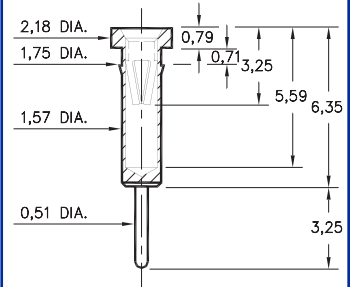
### 0294



#### 0294-0-15-XX-06-XX-10-0

Solder mount in 1,93 min.  
mounting hole

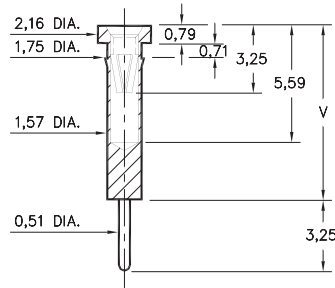
### 0398



#### 0398-0-15-XX-06-XX-04-0

Press-fit in 1,68 mounting hole

### 0397

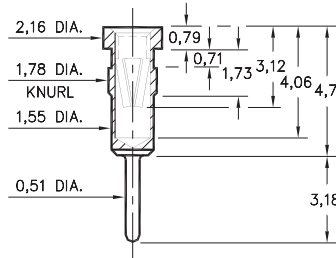


#### 0397-X-15-XX-06-XX-04-0

Press-fit in 1,68 mounting hole

Basic Part Number	Length V
0397-0	8,97
0397-1	8,46
0397-2	10,49

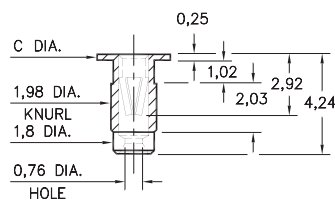
### 0297



#### 0297-0-15-XX-06-XX-04-0

Press-fit in 1,7 mounting hole

### 9019/9039



#### 90X9-X-19-XX-06-XX-10-0

Press-fit in 1,91 mounting hole

Basic Part Number	Head Dia. C
9019-0	3,18
9039-0	2,54

## SPECIFICATIONS

**SHELL MATERIAL:**  
Brass Alloy 360, 1/2 Hard

**CONTACT MATERIAL:**  
Beryllium Copper Alloy 172, HT

**DIMENSION IN INCHES**  
**TOLERANCES ON:**  
LENGTHS: ±0,13  
DIAMETERS: ±0,05  
ANGLES: ± 2°

**ORDER CODE: XXXX - X - 1X - XX - 06 - XX - XX - 0**

**BASIC PART #**

**SPECIFY SHELL FINISH:**

- 01 5,08µm TIN/LEAD OVER NICKEL
- ◇ 80 5,08µm TIN OVER NICKEL (RoHS)
- ◇ 15 0,25µm GOLD OVER NICKEL (RoHS)

**SPECIFY CONTACT FINISH:**

- 01 5,08µm TIN/LEAD OVER NICKEL
- ◇ 80 5,08µm TIN OVER NICKEL (RoHS)
- ◇ 27 0,76µm GOLD OVER NICKEL (RoHS)



**CONTACT**

#06 CONTACT (DATA ON PAGE 220)