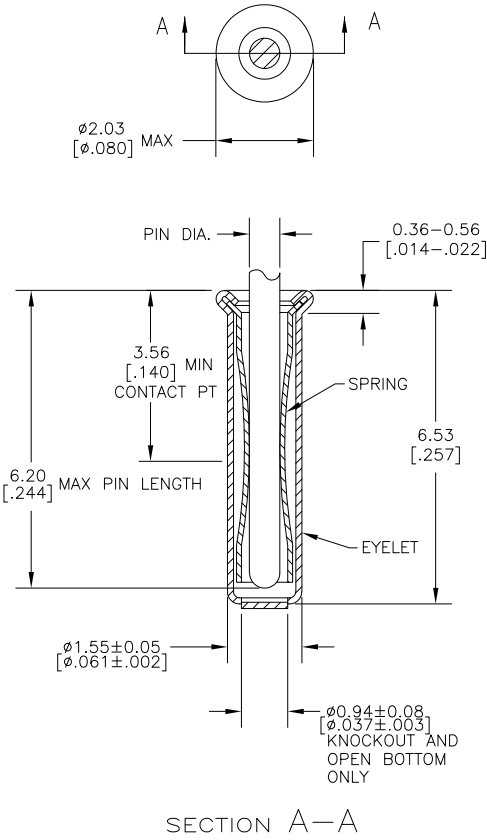


THIS DRAWING IS UNPUBLISHED. RELEASED FOR PUBLICATION
 © COPYRIGHT BY TYCO ELECTRONICS CORPORATION. ALL RIGHTS RESERVED.

LOC		DIST		REVISIONS			
FT	64	F	LTR	DESCRIPTION	DATE	OWN	APP'D
		AD1		REV PER ECO-06-018765	13APR07	DH	DB



- △ TIN PER MIL-T-10727 OR TIN LEAD 0.00254 [0.000100] MIN THK.
- △ GOLD PER MIL-G-45204, TYPE II, 0.00076 [0.000030] MIN THK OVER NICKEL PER QQ-N-290 0.00028 [0.000011] MIN THK ON CONTACT AREA.
- △ GOLD FLASH PER MIL-G-45204, TYPE II, 0.13µm [0.000005] MIN THK. OVER NICKEL PLATE PER QQ-N-290 0.51µm-1.52µm [0.000020-0.000060] EXT THK.
- △ TIN PER MIL-T-10727 OR TIN LEAD 0.00381 [0.000150] MIN THK.
- 5. RECOMMENDED HOLE SIZE, PLATED OR UNPLATED:
 - MACHINE INSERTION: 1.57 ^{+0.10}/_{-0.08} [0.062 ^{+0.04}/_{-0.03}]
 - HAND INSERTION: 1.60 ^{+0.10}/_{-0.00} [0.063 ^{+0.04}/_{-0.00}]
- e. APPLICATION TOOL PART NUMBER: MACHINE NO. 682127-4
 INSERTION HEAD NO. 682039-3
- △ TO INSURE PROPER SPRING TENSION DO NOT EXCEED A 0.05 [0.002] DIFFERENCE IN PIN DIA WHEN CHANGING TO A SMALLER PIN.
- a. BOTTOM PLUG KNOCKOUT TOOL PART NUMBER 69729 WITH TIP PART NUMBER 69728-1.
- △ MATERIAL: SPRING: BERYLLIUM COPPER QQ-C-533
 EYELET: COPPER, QQ-C-576

SUPERSEDED BY 50864-1 OBSOLETE OBSOLETE OBSOLETE OBSOLETE	CLOSED	0.66-0.84 [0.026-0.033]	TIN △	GOLD △	1-50864-5
	OPEN				1-50864-3
	KNOCKOUT				50864-8
	CLOSED				50864-7
	OPEN				50864-6
	KNOCKOUT				50864-5
	CLOSED				50864-4
	OPEN				50864-3
	KNOCKOUT				50864-1
	CLOSED				50864
BOTTOM TYPE	RECOMMENDED PIN DIA △		EYELET FINISH	SPRING FINISH	PART NO

THIS DRAWING IS A CONTROLLED DOCUMENT. DIM 4-3-91

DIMENSIONS: mm [INCHES]

TOLERANCES UNLESS OTHERWISE SPECIFIED:

0 PL.	±	-
1 PL.	±	-
2 PL.	±	-
3 PL.	±	0.20 [0.008]
4 PL.	±	-
ANGLES	±	-
FINISH		

MATERIAL: △

DESIGNER: R. VALLEY

DATE: 4-3-91

APPROVED: [Signature]

PRODUCT SPEC: -

APPLICATION SPEC: -

WEIGHT: -

CUSTOMER DRAWING

TYCO Electronics Corporation
 Harrisburg, Pa 17105-3608

MINIATURE SPRING SOCKET ASSEMBLY

SIZE: A2 CASE CODE: C-50864 DRAWING NO: 00779

RESTRICTED TO: -

SCALE: 20:1 SHEET 1 OF 1 REV AD1