

4

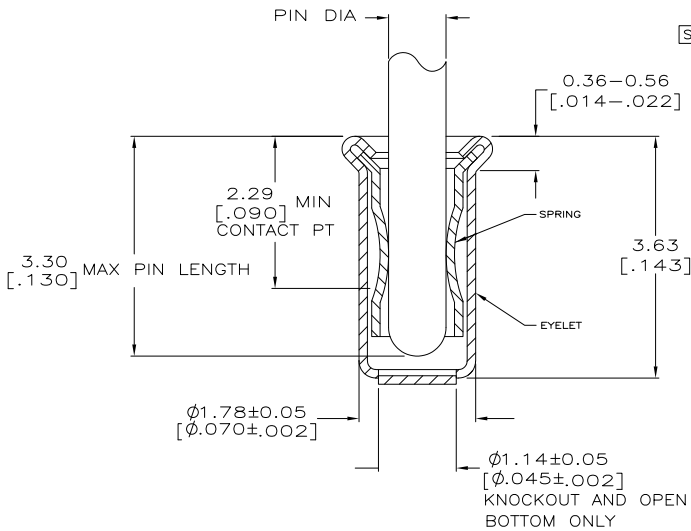
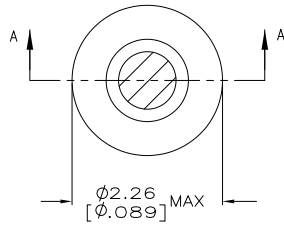
3

2

1

THIS DRAWING IS UNPUBLISHED. RELEASED FOR PUBLICATION. ALL RIGHTS RESERVED.

LOC	DIST	REVISIONS					
FT	64	F	LNK	DESCRIPTION	DATE	BY	APPD
		AK1		REVISED PER ECO-11-004835	11MAR11	RK	HMR



SECTION A-A

- △ TIN PER MIL-T-10727 OR TIN LEAD 0.00254 [0.000100] MIN THK.  
 △ NICKEL UNDERPLATE ALL OVER, MATING SURFACE PLATED TO MEET PERFORMANCE REQUIREMENTS OF TE CONNECTIVITY PRODUCT SPECIFICATION 108-14008.  
 △ GOLD FLASH PER MIL-G-45204, TYPE II, 0.13µm [0.000005] MIN THK. OVER NICKEL PLATE PER QQ-N-290 0.51µm-1.52µm [0.00020-0.00060] EXT THK.  
 △ TIN PER MIL-T-10727 OR TIN LEAD 0.00381 [0.000150] MIN THK.  
 5. RECOMMENDED HOLE SIZE, PLATED OR UNPLATED:  
 MACHINE INSERTION: 1.83 <sup>+0.10</sup>/<sub>-0.08</sub> [0.72 <sup>+0.004</sup>/<sub>-0.003</sub>]  
 HAND INSERTION: 1.83 <sup>+0.10</sup>/<sub>-0.00</sub> [0.72 <sup>+0.004</sup>/<sub>-0.000</sub>]  
 6. APPLICATION TOOL PART NUMBER: MACHINE NO. 682127-5  
 INSERTION HEAD NO. 682039-4  
 △ TO INSURE PROPER SPRING TENSION DO NOT EXCEED A 0.05 [0.002] DIFFERENCE IN PIN DIA WHEN CHANGING TO A SMALLER PIN.  
 8. BOTTOM PLUG KNOCKOUT TOOL PART NUMBER 69729 WITH TIP PART NUMBER 69728-2.  
 △ MATERIAL: SPRING: BERYLLIUM COPPER (QQ-C-533)  
 EYELET: COPPER (QQ-C-576)

OBSELETE	OPEN	0.71-0.84 [0.28-.033]	TIN △	GOLD △	4-332070-4
SUPSD BY 1-332070-9		0.94-1.02 [0.37-.040]		GOLD △	4-332070-3
OBSELETE	KNOCKOUT	0.94-1.02 [0.37-.040]	TIN △	GOLD △	3-332070-9
OBSELETE				TIN △	3-332070-5
SUPSD BY 50865-1	KNOCKOUT	0.76-0.84 [0.30-.033]		TIN △	3-332070-4
OBSELETE				TIN △	3-332070-3
OBSELETE	OPEN	0.94-1.02 [0.37-.040]		TIN △	3-332070-0
OBSELETE				GOLD △	2-332070-9
OBSELETE		0.86-0.94 [0.34-.037]		TIN △	2-332070-8
OBSELETE				GOLD △	2-332070-7
OBSELETE		0.76-0.84 [0.30-.033]		TIN △	2-332070-6
OBSELETE				GOLD △	2-332070-5
OBSELETE	CLOSED	0.94-1.02 [0.37-.040]	TIN △	TIN △	2-332070-4
OBSELETE		0.86-0.94 [0.34-.037]		GOLD △	2-332070-3
OBSELETE		0.76-0.84 [0.30-.033]		TIN △	2-332070-2
OBSELETE	KNOCKOUT	0.94-1.02 [0.37-.040]		GOLD △	2-332070-1
OBSELETE		0.94-1.02 [0.37-.040]		TIN △	2-332070-0
OBSELETE	OPEN	0.86-0.94 [0.34-.037]		GOLD △	1-332070-9
OBSELETE		0.76-0.84 [0.30-.033]		TIN △	1-332070-8
OBSELETE		0.94-1.02 [0.37-.040]		GOLD △	1-332070-7
OBSELETE		0.94-1.02 [0.37-.040]		TIN △	1-332070-4
OBSELETE		0.86-0.94 [0.34-.037]		GOLD △	1-332070-3
OBSELETE		0.76-0.84 [0.30-.033]		TIN △	1-332070-2
OBSELETE	CLOSED	0.94-1.02 [0.37-.040]	GOLD △	GOLD △	1-332070-1
OBSELETE		0.86-0.94 [0.34-.037]		TIN △	1-332070-0
OBSELETE		0.76-0.84 [0.30-.033]		TIN △	332070
BOTTOM TYPE	RECOMMENDED PIN DIA		EYELET	SPRING	PART NO

THIS DRAWING IS A CONTROLLED DOCUMENT.		DRW	4-5-91	TE Connectivity	
DIMENSIONS: mm [INCHES]		CHK <td>8-3-91 <td colspan="2">MINIATURE SPRING SOCKET ASSEMBLY, SERIES 4</td> </td>	8-3-91 <td colspan="2">MINIATURE SPRING SOCKET ASSEMBLY, SERIES 4</td>	MINIATURE SPRING SOCKET ASSEMBLY, SERIES 4	
TOLERANCES UNLESS OTHERWISE SPECIFIED:		APPD <td>8-22-91 <td colspan="2">RESTRICTED TO</td> </td>	8-22-91 <td colspan="2">RESTRICTED TO</td>	RESTRICTED TO	
0 PLG	±	NAME			
1 PLG	±	S. ROBERTSON			
2 PLG	±	APPLICATION SPEC			
3 PLG	± 0.20 [0.008]	SIZE CASE CODE DRAWING NO			
4 PLG	±	A2 00779 C=332070			
ANGLES	±	WEIGHT			
MATERIAL		SEE TABLE		CUSTOMER DRAWING	
FINISH		SCALE 20:1		SHEET 1 of 1	