

4

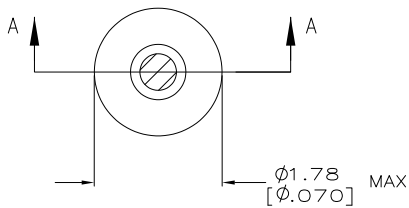
3

2

1

THIS DRAWING IS UNPUBLISHED. RELEASED FOR PUBLICATION. ALL RIGHTS RESERVED.

| LOC | DIST | REVISIONS | | |
|-----|------|---------------------------|---------|--------|
| F | LNK | DESCRIPTION | DATE | BY |
| FT | 64 | | | |
| | AS4 | REVISED PER ECO-11-004835 | 11MAR11 | RK HMR |



- △ TIN PER MIL-T-10727 OR TIN LEAD .00254 [.000100] MIN THK.
- △ GOLD PER MIL-G-45204, TYPE II, 0.00076 [.000030] MIN THK OVER NICKEL PER QQ-N-290 0.00028 [.000011] MIN THK ON CONTACT AREA.
- △ GOLD FLASH PER MIL-G-45204, TYPE II, 0.13μm [.000005] MIN THK. OVER NICKEL PLATE PER QQ-N-290 0.51μm-1.52μm [.000020-.000060] EXT THK.

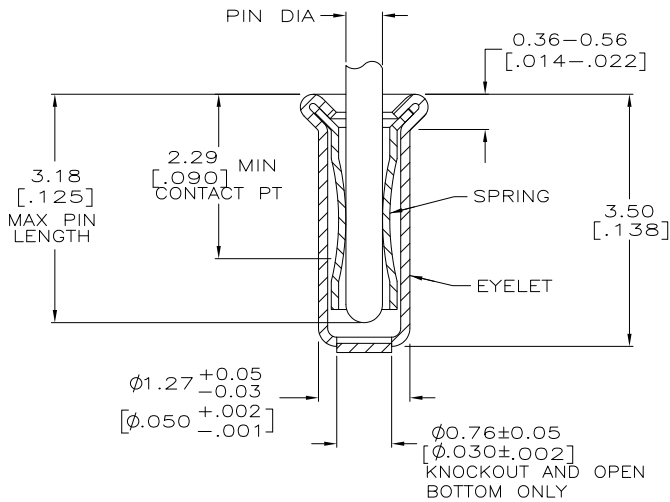
4. RECOMMENDED HOLE SIZE, PLATED OR UNPLATED:
 MACHINE INSERTION: 1.32±0.05 [.052±.002]
 HAND INSERTION: 1.32 +0.10 [-.000] [-.000]

5. APPLICATION TOOL PART NUMBER:
 MACHINE NO. 682127-3
 INSERTION HEAD NO. 682039-2

- △ TO INSURE PROPER SPRING TENSION DO NOT EXCEED A 0.05 [.002] DIFFERENCE IN PIN DIA WHEN CHANGING TO A SMALLER PIN.

7. BOTTOM PLUG KNOCKOUT TOOL PART NUMBER 69729 WITH TIP PART NUMBER 69728.

- △ MATERIAL: SPRING: BERYLLIUM COPPER QQ-C-533
 EYELET: COPPER: QQ-C-576
 △ OBSOLETE PARTS: OBSOLETE CIS STREAMLINING PER D.RENAUD/D.SINISI



| SUPSD BY | RECOMMENDED PIN DIA | FINISH | PART NO |
|------------|-----------------------|---------------|------------|
| 2-331272-7 | 0.56-0.64 [.022-.025] | TIN △ | 331272-2 |
| OBSOLETE | | GOLD △ | 4-331272-3 |
| | | TIN △ | 4-331272-2 |
| | | TIN △ | 4-331272-1 |
| | | GOLD △ | 3-331272-9 |
| | | TIN △ | 3-331272-8 |
| | | TIN △ | 3-331272-7 |
| | | GOLD △ | 3-331272-4 |
| | | TIN △ | 3-331272-5 |
| | | GOLD △ | 3-331272-4 |
| | | TIN △ | 3-331272-3 |
| | | TIN △ | 3-331272-1 |
| | | GOLD △ | 3-331272-0 |
| | | TIN △ | 2-331272-7 |
| | | GOLD △ | 2-331272-6 |
| | | TIN △ | 2-331272-5 |
| | | TIN △ | 2-331272-3 |
| | | GOLD △ | 2-331272-2 |
| | | TIN △ | 2-331272-1 |
| | | EYELET SPRING | |

A-A SECTION

THIS DRAWING IS A CONTROLLED DOCUMENT. DWG R. TALLEY 4-5-91

DATE: 4-5-91

TE Connectivity

MINIATURE SPRING SOCKET ASSEMBLY, SERIES 2

SIZE: A2 CASE CODE: C=331272

SCALE: 20:1 SHEET: 1 of 1

CUSTOMER DRAWING