

4

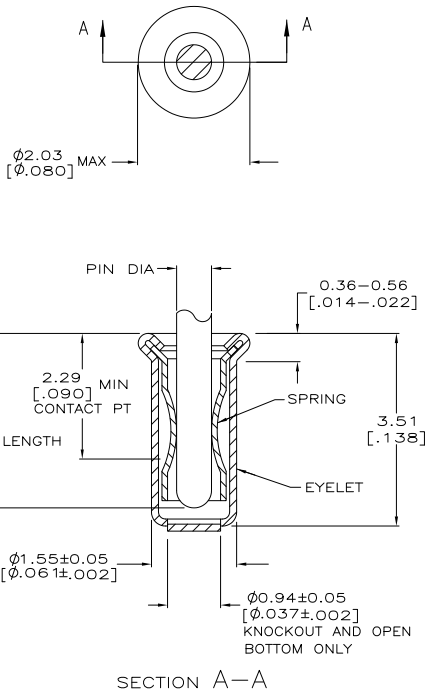
3

2

1

THIS DRAWING IS UNPUBLISHED.
 RELEASED FOR PUBLICATION
 ALL RIGHTS RESERVED.

LOC	DIST	REVISIONS					
GP	00	F	LNK	DESCRIPTION	DATE	BY	APPD
		AR4		REVISED PER ECO-11-004835	11MAR11	RLK	HMR



- ⚠ TIN PER MIL-T-10727 OR TIN LEAD 0.00254 [.000100] MIN THK.
- ⚠ GOLD PER MIL-G-45204, TYPE II, 0.00076 [.000030] MIN THK OVER NICKEL PER QQ-N-290 0.00028 [.000011] MIN THK ON CONTACT AREA.
- ⚠ GOLD FLASH PER MIL-G-45204, TYPE II, 0.13 μm [.000005] MIN THK OVER NICKEL PLATE PER QQ-N-290 0.51 μm-1.52 μm [.000020-.000060] EXT THK
- ⚠ TIN PER MIL-T-10727 OR TIN LEAD 0.00381 [.000150] MIN THK.
- 5. RECOMMENDED HOLE SIZE, PLATED OR UNPLATED:
 - MACHINE INSERTION: 1.57 $\begin{matrix} +0.10 \\ -0.08 \end{matrix}$ $\begin{bmatrix} .062 +.004 \\ -.003 \end{bmatrix}$
 - HAND INSERTION: 1.60 $\begin{matrix} +0.10 \\ -0.00 \end{matrix}$ $\begin{bmatrix} .063 +.004 \\ -.000 \end{bmatrix}$
- 6. APPLICATION TOOL PART NUMBER: MACHINE NO. 682127-4
 INSERTION HEAD NO. 682039-3
- ⚠ TO INSURE PROPER SPRING TENSION DO NOT EXCEED A 0.05 [.002] DIFFERENCE IN PIN DIA WHEN CHANGING TO A SMALLER PIN.
- 8. BOTTOM PLUG KNOCKOUT TOOL PART NUMBER 69729 WITH TIP PART NUMBER 69728-1.
- ⚠ TIN PER ASTM B 545, 0.00254 [.000100] MIN THK.

⚠	CLOSED	0.76-0.84 [.030-.033]	TIN	TIN	8-331677-3
	OPEN	0.76-0.84 [.030-.033]	TIN	GOLD	7-331677-4
OBSOLETE		0.76-0.84 [.030-.033]	TIN		7-331677-3
OBSOLETE					7-331677-1
OBSOLETE	CLOSED	0.66-0.74 [.026-.029]		GOLD	3-331677-8
OBSOLETE		0.56-0.64 [.022-.025]		TIN	3-331677-7
OBSOLETE	KNOCKOUT	0.76-0.84 [.030-.033]	TIN		3-331677-5
OBSOLETE		0.66-0.74 [.026-.029]			3-331677-2
OBSOLETE		0.76-0.84 [.030-.033]		GOLD	3-331677-4
OBSOLETE		0.66-0.74 [.026-.029]			3-331677-0
⚠	OPEN	0.76-0.84 [.030-.033]	GOLD	GOLD	2-331677-9
SUPSD BY 50864-8		0.66-0.74 [.026-.029]			2-331677-7
OBSOLETE		0.76-0.84 [.030-.033]			2-331677-6
OBSOLETE		0.66-0.74 [.026-.029]			2-331677-4
OBSOLETE	CLOSED	0.76-0.84 [.030-.033]	TIN	GOLD	2-331677-2
OBSOLETE		0.56-0.64 [.022-.025]	TIN	TIN	2-331677-1
OBSOLETE		0.76-0.84 [.030-.033]	GOLD	GOLD	2-331677-0
OBSOLETE		0.56-0.64 [.022-.025]	TIN	TIN	1-331677-9
OBSOLETE		0.76-0.84 [.030-.033]	GOLD	GOLD	1-331677-8
OBSOLETE		0.56-0.64 [.022-.025]	TIN	TIN	1-331677-6
OBSOLETE		0.76-0.84 [.030-.033]	GOLD	GOLD	1-331677-4
OBSOLETE		0.66-0.74 [.026-.029]	TIN	TIN	1-331677-3
OBSOLETE		0.66-0.74 [.026-.029]	TIN	TIN	1-331677-1
OBSOLETE		0.66-0.74 [.026-.029]	TIN	TIN	1-331677-0

⚠ MATERIAL: SPRING COPPER QQ-C-533 EYELET: COPPER QQ-C-576
 ⚠ OBSOLETE PARTS: OBSOLETE CIS STREAMLINING PER D.RENAUD/D.SINISI

THIS DRAWING IS A CONTROLLED DOCUMENT. 4-2-91

DATE: 4-2-91
 CHK: R. TALLEY
 NAME: R. TALLEY

DIMENSIONS: mm [INCHES]

TOLERANCES UNLESS OTHERWISE SPECIFIED	PRODUCT SPEC	APPLICATION SPEC	SIZE	CAGE CODE	DRAWING NO	RESTRICTED TO
Ø PLG ± .01			A2	00779	C=331677	-
1 PLG ± .01						
2 PLG ± .01						
3 PLG ± .020 [0.008]						
4 PLG ± .01						
ANGLES ± .5°						

MATERIAL: FINISH: ⚠

CUSTOMER DRAWING

SCALE: 1:1 SHEET 1 of 1 REC AR4