

4

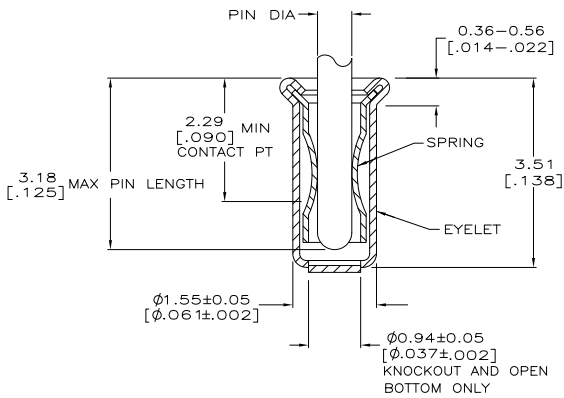
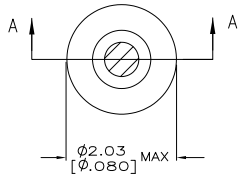
3

2

1

THIS DRAWING IS UNPUBLISHED. RELEASED FOR PUBLICATION. ALL RIGHTS RESERVED.

LOC	QST	REVISIONS			
F	LTR	DESCRIPTION	DATE	OWN	APVD
GP	00				
P		REVISED PER ECO-11-004835	07MAR11	RK	HMR



SECTION A-A

- △ TIN PLATE PER ASTM B 545 0.00254 [.000100] MIN THICK.
- △ GOLD PLATE PER ASTM B 488 0.00076 [.000030] MIN THICK OVER NICKEL PLATE PER QQ-N-290 0.00028 [.000011] MIN THICK ON CONTACT AREA.
- 3. RECOMMENDED HOLE SIZE, PLATED OR UNPLATED:
 - MACHINE INSERTION: 1.57 $\begin{matrix} +0.10 \\ -0.08 \end{matrix}$ $\begin{bmatrix} .062 & +.004 \\ & -.003 \end{bmatrix}$
 - HAND INSERTION: 1.60 $\begin{matrix} +0.10 \\ -0.00 \end{matrix}$ $\begin{bmatrix} .063 & +.004 \\ & -.000 \end{bmatrix}$
- 4. APPLICATION TOOL PART NUMBER: MACHINE NO. 682127-4 INSERTION HEAD NO. 682039-3
- △ TO INSURE PROPER SPRING TENSION DO NOT EXCEED A 0.05 [.002] DIFFERENCE IN PIN DIA WHEN CHANGING TO A SMALLER PIN.
- 6. BOTTOM PLUG KNOCKOUT TOOL PART NUMBER 69728 WITH TIP PART NUMBER 69728-1.
- 7. MATERIAL: BERYLLIUM COPPER PER ASTM B 184 EYELET: COPPER PER ASTM B 152
- △ OBSOLETE PARTS: OBSOLETE CIS STREAMLINING PER D.RENAUD/D.SINISI

△ OBSOLETE	OPEN	0.76-0.84	[.030-.033]	TIN △	GOLD △	7-5331677-4
	CLOSED	0.66-0.74	[.026-.029]			
	KNOCKOUT	0.76-0.84	[.030-.033]			3-5331677-4
	OPEN	0.66-0.74	[.026-.029]			2-5331677-2
		0.76-0.84	[.030-.033]			2-5331677-2
	CLOSED	0.56-0.64	[.022-.025]			1-5331677-8
		0.76-0.84	[.030-.033]		TIN △	1-5331677-6
	BOTTOM TYPE	RECOMMENDED PIN DIA		EYELET	SPRING	PART NO
				FINISH		

THIS DRAWING IS A CONTROLLED DOCUMENT.		OWN	J. FERNANDEZ-1002005	TE Connectivity	
DRAWN BY		CHK	J. HAVENER 224492000	MINIATURE SPRING SOCKET ASSEMBLY	
DIMENSIONS: mm [INCHES]		APPROVED	J. HAVENER 224492000	PRODUCT SPEC: 108-14008	
TOLERANCES UNLESS OTHERWISE SPECIFIED:		APPLICATION SPEC: 114-13152		SIZE: A2 CASE CODE: C DRAWING NO: 5331677	
MATERIAL: NOTE 7		FINISH: SEE TABLE		WEIGHT: -	
		CUSTOMER DRAWING		SCALE: 20:1 SHEET: 1 of 1 REV: P	