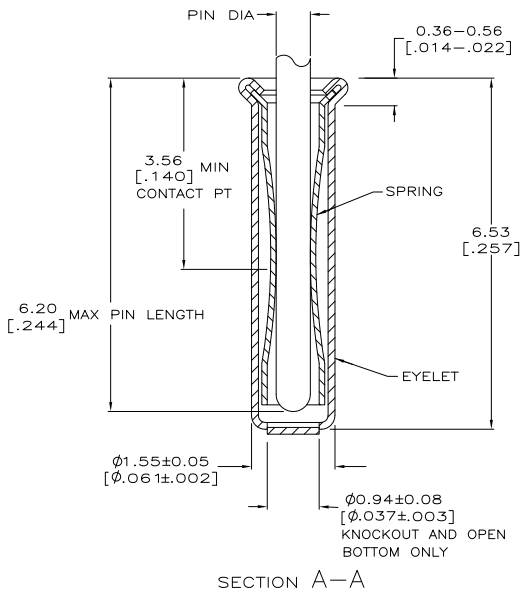
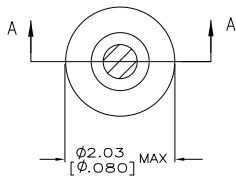


THIS DRAWING IS UNPUBLISHED.
 © COPYRIGHT - BY -
 RELEASED FOR PUBLICATION
 ALL RIGHTS RESERVED.

LOC		REV		REVISIONS	
FT	64	TR	LR	DESCRIPTION	DATE
P					
P				REVISED PER ECO-11-004835	11MAR11
					RK HMR



1 TIN PLATE PER ASTM-B-545 0.00254 [0.000100] MIN THK.
 2 GOLD PER MIL-G-45204, TYPE II, 0.00076 [0.000030] MIN THK OVER NICKEL PER QQ-N-290 0.00028 [0.000011] MIN THK ON CONTACT AREA.

3. RECOMMENDED HOLE SIZE, PLATED OR UNPLATED:
 MACHINE INSERTION: 1.57 +0.10 [-0.08] [0.062 +0.004 [-0.003]]
 HAND INSERTION: 1.60 +0.10 [-0.00] [0.063 +0.004 [-0.000]]

4. APPLICATION TOOL PART NUMBER: MACHINE NO. 682127-4
 INSERTION HEAD NO. 682039-3
 5 TO INSURE PROPER SPRING TENSION DO NOT EXCEED A 0.05 [0.002] DIFFERENCE IN PIN DIA WHEN CHANGING TO A SMALLER PIN.

7. BOTTOM PLUG KNOCKOUT TOOL PART NUMBER 69729 WITH TIP PART NUMBER 69728-1.
 8 SPRING: BERYLLIUM COPPER QQ-C-533
 9 EYELET: COPPER QQ-C-576

OPEN	0.66-0.84 [0.026-.033]	TIN	TIN	5050864-8
CLOSED			GOLD	5050864-6
OPEN			SPRING	5050864-5
CLOSED			FINISH	5050864-1
BOTTOM TYPE	RECOMMENDED PIN DIA	EYELET	FINISH	PART NO

THIS DRAWING IS A CONTROLLED DOCUMENT.		DWG		DATE	
		ALCORTA - DOCKS		04-20-05	
		HAVENER		04-20-05	
DIMENSIONS:		TOLERANCES UNLESS OTHERWISE SPECIFIED:		PRODUCT SPEC	
mm[INCHES]		0.125 [0.005]		108-14008	
0.125 [0.005]		0.25 [0.010]		APPLICATION SPEC	
0.25 [0.010]		0.50 [0.020]		114-26000	
0.50 [0.020]		1.00 [0.040]		SIZE	
1.00 [0.040]		2.00 [0.080]		CASE CODE	
2.00 [0.080]		4.00 [0.160]		DRAWING NO	
4.00 [0.160]		8.00 [0.315]		A200779	
8.00 [0.315]		16.00 [0.630]		DRAWING NO	
16.00 [0.630]		32.00 [1.260]		C=5050864	
32.00 [1.260]		64.00 [2.520]		RESTRICTED TO	
64.00 [2.520]		128.00 [5.040]		CUSTOMER DRAWING	
128.00 [5.040]		256.00 [10.080]		SCALE	
256.00 [10.080]		512.00 [20.160]		20:1	
512.00 [20.160]		1024.00 [40.320]		SHEET	
1024.00 [40.320]		2048.00 [80.640]		1 of 1	
2048.00 [80.640]		4096.00 [161.280]		REV	
4096.00 [161.280]		8192.00 [322.560]		P	