

4

3

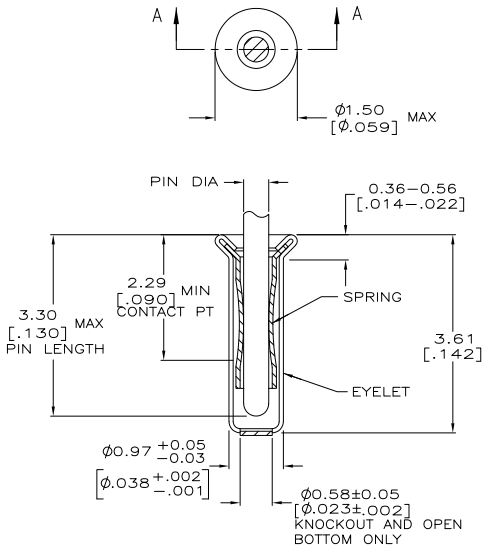
2

1

THIS DRAWING IS UNPUBLISHED. RELEASED FOR PUBLICATION. ALL RIGHTS RESERVED.

LOC	DIST	REVISIONS		
P	LTR	DESCRIPTION	DATE	BY
FT	64			
P		REVISED PER ECO-11-004835	11MAR11	RK HMR

- 1 TIN PLATE PER ASTM B 545 .000254 [.000100] MIN THICK.  
 2 GOLD PLATE PER ASTM B 488, 0.00076 [.000030] MIN THICK OVER NICKEL PLATE PER QQ-N-290 0.00028 [.000011] MIN THICK ON CONTACT AREA.
3. RECOMMENDED HOLE SIZE, PLATED OR UNPLATED:  
 MACHINE INSERTION: 1.04±0.05 [.041±.002]  
 HAND INSERTION: 1.02 <sup>+0.10</sup> <sub>-0.00</sub> [.040 <sup>+0.004</sup> <sub>-.000</sub>]
4. APPLICATION TOOL PART NUMBER:  
 MACHINE NO. 682127-2  
 INSERTION HEAD NO. 682039-1
- 5 TO INSURE PROPER SPRING TENSION DO NOT EXCEED A 0.10 [.004] DIFFERENCE IN PIN DIA WHEN CHANGING TO A SMALLER PIN.
6. BOTTOM PLUG KNOCKOUT TOOL PART NUMBER 69729 WITH TIP PART NUMBER 69728.
- 7 MATERIAL:  
 SPRING: BERYLLIUM COPPER PER ASTM B 194  
 EYELET: COPPER PER ASTM B 152
- 8 OBSOLETE PARTS: OBSOLETE CIS STREAMLINING PER D.RENAUD/D.SINISI



SECTION A-A

OBVIOUS	OPEN	0.46-0.51 [.018-.020]	TIN	GOLD	6-5330808-0
	CLOSED	0.33-0.51 [.013-.020]			6-5330808-5
	OPEN	0.25-0.33 [.010-.013]			5-5330808-6
	KNOCKOUT	0.33-0.51 [.013-.020]			5-5330808-4
	CLOSED	0.25-0.33 [.010-.013]			5-5330808-3
	OPEN	0.33-0.51 [.013-.020]			5-5330808-0
	CLOSED	0.33-0.51 [.013-.020]			4-5330808-7
					2-5330808-7
	BOTTOM TYPE	RECOMMENDED PIN DIA	EYELET FINISH	SPRING FINISH	PART NO

SUPERSEDED BY 5-5330808-4

OBVIOUS

DIMENSIONS:		TE CONNECTIVITY	
INCHES	0.0005	TE CONNECTIVITY	TE Connectivity
MATERIAL	SEE TABLE	MINIATURE SPRING SOCKET ASSEMBLY SERIES 1	RESTRICTED TO
FINISH	SEE TABLE	SIZE CASE CODE DRAWING NO	A2 00779 C=5330808
		RIGHT	SCALE 20:1 SHEET 1 of 1 REV P
		CUSTOMER DRAWING	