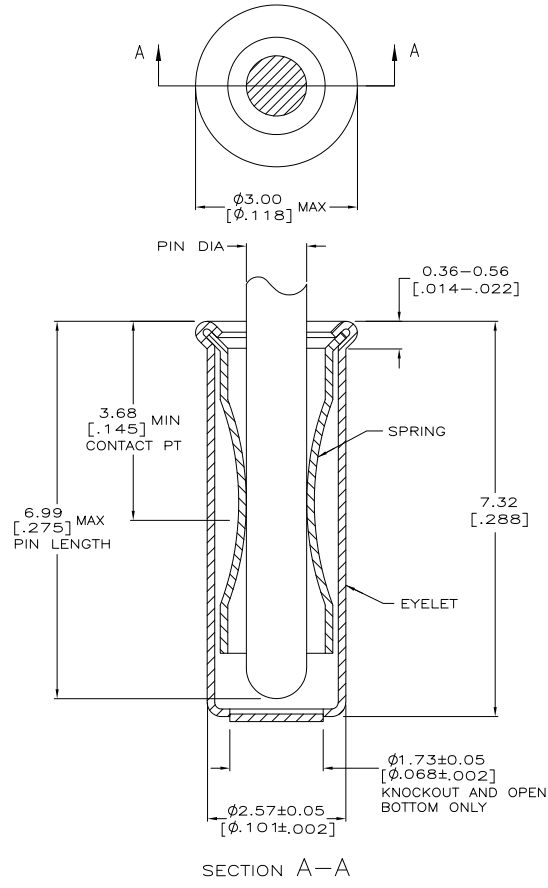


THIS DRAWING IS UNPUBLISHED. RELEASED FOR PUBLICATION. ALL RIGHTS RESERVED.

REVISONS		11-11-84	RT
NO	DESCRIPTION	DATE	BY
A2	REVISED PER ECO-11-004835	07MAR11	RK HMR



- △ TIN PLATE PER ASTM B 545 .000254 [.000100] MIN THICK.
- △ GOLD PER ASTM B 488, 0.00076 [.000030] MIN THICK OVER NICKEL PLATE PER QQ-N-290 0.00028 [.000011] MIN THICK ON CONTACT AREA.
- 3. RECOMMENDED HOLE SIZE, PLATED OR UNPLATED:  
 MACHINE INSERTION: 2.56±0.08 [.101±.003]  
 HAND INSERTION: 2.62<sup>+0.10</sup><sub>-0.00</sub> [.103<sup>+0.04</sup><sub>-0.000</sub>]
- 4. APPLICATION TOOL PART NUMBER:  
 MACHINE NO. 682127-6  
 INSERTION HEAD NO. 682039-5
- △ TO INSURE PROPER SPRING TENSION DO NOT EXCEED A 0.05 [.002] DIFFERENCE IN PIN DIA WHEN CHANGING TO A SMALLER PIN.
- 6. BOTTOM PLUG KNOCKOUT TOOL PART NUMBER 69729 WITH TIP PART NUMBER 69728-3.
- △ MATERIAL: SPRING: BERYLLIUM COPPER PER ASTM B 194  
 EYELET: COPPER PER ASTM B 152
- △ OBSOLETE PARTS: OBSOLETE CIS STREAMLINING PER D.RENAUD/D.SINISI

OPEN	1.42-1.65 [.056-.065]	TIN	2-5050871-4
CLOSED			2-5050871-3
<del>OBSOLETE</del> KNOCKOUT			<del>2-5050871-1</del>
OPEN	1.27-1.45 [.050-.057]	TIN	1-5050871-9
CLOSED			1-5050871-0
OPEN	1.07-1.24 [.042-.049]	TIN	5050871-8
CLOSED			5050871-6
OPEN		GOLD	5050871-5
			5050871-1
BOTTOM TYPE	RECOMMENDED PIN DIA	EYELET SPRING FINISH	PART NO

THIS DRAWING IS A CONTROLLED DOCUMENT.		CHK	ALCORTA	204PR2005	STE TE Connectivity	
DIMENSIONS: min [INCHES]		CHK	HAVENER	204PR2005	MINIATURE SPRING SOCKET ASSEMBLY SERIES 5	
TOLERANCES UNLESS OTHERWISE SPECIFIED:		APD	HAVENER	204PR2005	SIZE CASE CODE DRAWING NO RESTRICTED TO	
0 P/LC ±					A2	00779 C=5050871
1 P/LC ±						SCALE 20:1 SHEET 1 OF 1 REV A2
2 P/LC ±						
3 P/LC ± 0.20 [0.008]						
4 P/LC ± *						
ANGLES FINISH						
MATERIAL	SEE TABLE	WEIGHT				
		CUSTOMER DRAWING				