

4

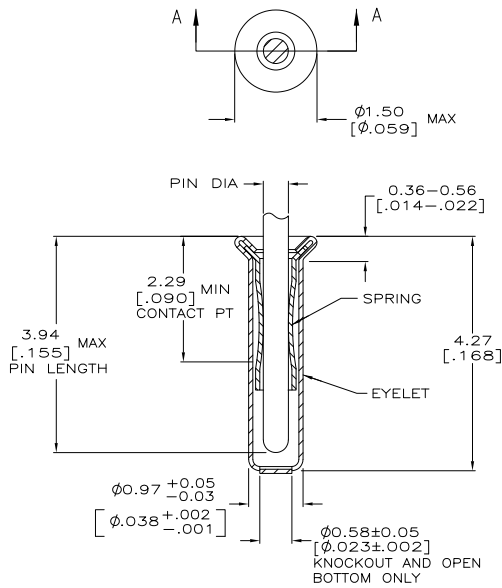
3

2

1

THIS DRAWING IS UNPUBLISHED. RELEASED FOR PUBLICATION
 © COPYRIGHT - By - ALL RIGHTS RESERVED.

LOC	DIST	REVISIONS		
P	LTR	DESCRIPTION	DATE	BY
GP	00			
	AC2	REVISED PER ECO-11-004835	11MAR11	RK HMR



SECTION A-A

- △ TIN PER MIL-T-10727 OR TIN LEAD .000254 [.000100] MIN THK.
- △ GOLD PER MIL-G-45204, TYPE II, 0.00076 [.000030] MIN THK OVER NICKEL PER QQ-N-290 0.00028 [.000011] MIN THK ON CONTACT AREA.
- △ GOLD FLASH PER MIL-G-45204, TYPE II, 0.13μm [.000005] MIN THK, OVER NICKEL PLATE PER QQ-N-290 0.51μm-1.52μm [.000020-.000060] EXT THK.
- 4. RECOMMENDED HOLE SIZE, PLATED OR UNPLATED:
 MACHINE INSERTION: 1.04±0.05 [.041±.002]
 HAND INSERTION: 1.02 +0.10/-0.00 [.040 +.004/-0.000]
- 5. APPLICATION TOOL PART NUMBER:
 MACHINE NO. 682127-2
 INSERTION HEAD NO. 682039-1
- △ TO INSURE PROPER SPRING TENSION DO NOT EXCEED A 0.10 [.004] DIFFERENCE IN PIN DIA WHEN CHANGING TO A SMALLER PIN.
- 7. BOTTOM PLUG KNOCKOUT TOOL PART NUMBER 69729 WITH TIP PART NUMBER 69728.
- △ TIN PER ASTM B 545, .000254 [.000100] MIN THK.

SUPSD BY 50935-1	CLOSED		TIN △	TIN △	6-50935-2
	OPEN		TIN △	GOLD △	50935-9
	KNOCKOUT	0.33-0.51 [.013-.020]	TIN △	TIN △	50935-8
OBSOLETE	CLOSED		GOLD △	GOLD △	50935-6
OBSOLETE			TIN △	TIN △	50935-5
OBSOLETE			GOLD △	GOLD △	50935-4
	BOTTOM TYPE	RECOMMENDED PIN DIA △	TIN △	TIN △	50935-2
			GOLD △	GOLD △	50935-1
			EYELET △	SPRING △	50935
			FINISH		PART NO

THIS DRAWING IS A CONTROLLED DOCUMENT.		DR: R. TALLEY	20SEP2005	TE Connectivity	
DIMENSIONS: INCHES		APPROVED: [Signature]	NAME: [Name]	MINIATURE SPRING SOCKET ASSEMBLY SERIES 1	
TOLERANCES UNLESS OTHERWISE SPECIFIED:		PRODUCT SPEC: [Spec]	APPLICATION SPEC: [Spec]	SIZE: A2	CAGE CODE: 00779
MATERIAL: BE CU		FINISH: [Finish]	WEIGHT: [Weight]	DRAWING NO: C-50935	RESTRICTED TO: [Restriction]
CUSTOMER DRAWING			SCALE: 20:1	SHEET: 1 of 1	REV: AC2

1471-9 (3/11)

50935

A