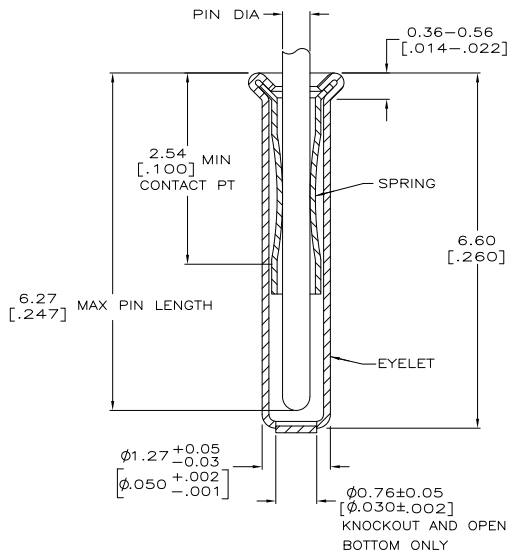
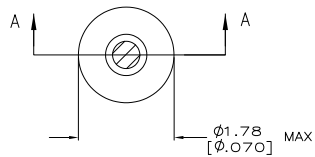


THIS DRAWING IS UNPUBLISHED. RELEASED FOR PUBLICATION. ALL RIGHTS RESERVED.

LOC		REV		REVISIONS			
FT	64	TR	LR	DESCRIPTION	DATE	BY	APPD
		P		REVISED PER ECO-11-004835	11MAR11	RK	HMR



SECTION A-A

- ⚠ TIN PLATE PER ASTM-B-545 0.00254 [0.000100] MIN THK.
- ⚠ GOLD PLATE PER ASTM B 488, 0.00076 [0.000030] MIN THK OVER NICKEL PER QQ-N-290 0.00028 [0.000011] MIN THK ON CONTACT AREA.
- ⚠ GOLD FLASH PER ASTM B 488, 0.13 μm [0.000005] MIN THICK, OVER NICKEL PLATE PER QQ-N-290 0.51 μm-1.52 μm [0.000020-0.000060] EXT THICK.
- 4. RECOMMENDED HOLE SIZE, PLATED OR UNPLATED:
 MACHINE INSERTION: 1.32 \pm 0.03 $\left[\begin{matrix} .052 & +.001 \\ & -.002 \end{matrix} \right]$
 HAND INSERTION: 1.32 \pm 0.10 $\left[\begin{matrix} .052 & +.004 \\ & -.000 \end{matrix} \right]$
- 5. APPLICATION TOOL PART NUMBER:
 MACHINE NO. 682127-3
 INSERTION HEAD NO. 682039-2
- ⚠ TO INSURE PROPER SPRING TENSION DO NOT EXCEED A 0.10 [0.004] DIFFERENCE IN PIN DIA WHEN CHANGING TO A SMALLER PIN.
- 7. BOTTOM PLUG KNOCKOUT TOOL PART NUMBER 69729 WITH TIP PART NUMBER 69728.
- ⚠ SPRING: BERYLLIUM COPPER QQ-C-533
- ⚠ EYELET: COPPER, QQ-C-576
- ⚠ OBSOLETE PARTS: OBSOLETE CIS STREAMLINING PER D.RENAUD/D.SINISI

⚠ OBSOLETE	CLOSED	0.36-0.66 [0.014-.026]	TIN ⚠	TIN ⚠	5050863-8
	KNOCKOUT				5050863-7
⚠ OBSOLETE	OPEN	0.36-0.66 [0.014-.026]	TIN ⚠	GOLD ⚠	5050863-6
	CLOSED				5050863-5
⚠ OBSOLETE	KNOCKOUT	0.36-0.66 [0.014-.026]	TIN ⚠		5050863-3
	OPEN				5050863-1
BOTTOM TYPE		RECOMMENDED PIN DIA	FINISH		PART NO

THIS DRAWING IS A CONTROLLED DOCUMENT.		BY	ALCORTA - DOCKS	204P0201	TE Connectivity
		CHK	HAVENER	204P0201	
DIMENSIONS: mm[INCHES]		TOLERANCES UNLESS OTHERWISE SPECIFIED:		PRODUCT SPEC	108-14008
Ø 1 PUC ± .01		1 PUC ± .01		APPLICATION SPEC	
Ø 1.27 PUC ± 0.005		1.27 PUC ± 0.005		WEIGHT	
Ø 1.27 PUC ± 0.005		1.27 PUC ± 0.005		SIZE	A2
Ø 1.27 PUC ± 0.005		1.27 PUC ± 0.005		QAGE CODE	00779
Ø 1.27 PUC ± 0.005		1.27 PUC ± 0.005		DRAWING NO	5050863
Ø 1.27 PUC ± 0.005		1.27 PUC ± 0.005		RESTRICTED TO	
Ø 1.27 PUC ± 0.005		1.27 PUC ± 0.005		CUSTOMER DRAWING	
Ø 1.27 PUC ± 0.005		1.27 PUC ± 0.005		SCALE	20:1
Ø 1.27 PUC ± 0.005		1.27 PUC ± 0.005		SHEET	1 of 1
Ø 1.27 PUC ± 0.005		1.27 PUC ± 0.005		REV	P