

4

3

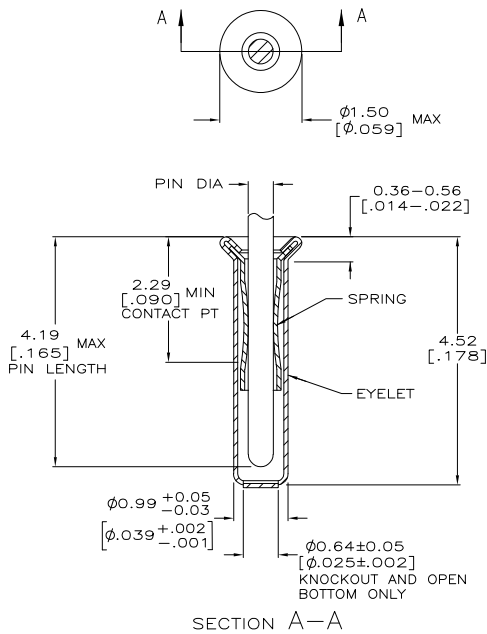
2

1

THIS DRAWING IS UNPUBLISHED. RELEASED FOR PUBLICATION
 © COPYRIGHT BY TYCO ELECTRONICS CORPORATION. ALL RIGHTS RESERVED.

LOC	DIST	REVISIONS			
FT	64	REV	DESCRIPTION	DATE	BY
		0	PER EC-0511-0022-05	22APR2005	AF JGH

- △ TIN PLATE PER ASTM B 545 .000254 [.000100] MIN THICK.
- △ GOLD PLATE PER ASTM B 488, 0.00076 [.000030] MIN THICK OVER NICKEL PLATE PER QQ-N-290 0.00028 [.000011] MIN THICK ON CONTACT AREA.
- 3. RECOMMENDED HOLE SIZE, PLATED OR UNPLATED:
 MACHINE INSERTION: 1.04±0.03 [.041±.001]
 HAND INSERTION: 1.04 ^{+0.10} _{-0.00} [.041 ^{+ .004} _{- .000}]
- 4. APPLICATION TOOL PART NUMBER:
 MACHINE NO. 682127-2
 INSERTION HEAD NO. 682039-1
- △ TO INSURE PROPER SPRING TENSION DO NOT EXCEED A 0.10 [.004] DIFFERENCE IN PIN DIA WHEN CHANGING TO A SMALLER PIN.
- 6. BOTTOM PLUG KNOCKOUT TOOL PART NUMBER 69729 WITH TIP PART NUMBER 69728.
- △ MATERIAL:
 SPRING: BERYLLIUM COPPER PER ASTM B 194
 EYELET: COPPER PER ASTM B 152



CLOSED KNOCKOUT	0.33-0.51 [.013-.020]	TIN △	GOLD △	2-5332095-4 1-5332095-9
BOTTOM TYPE	RECOMMENDED PIN DIA △	EYELET	SPRING	PART NO
THIS DRAWING IS A CONTROLLED DOCUMENT.		FINISH		
DIMENSIONS: mm (INCHES)	TOLERANCES UNLESS OTHERWISE SPECIFIED:	DWN A FERNANDEZ 22APR2005 CHK J HAVENER 22APR2005 TYPED J HAVENER 22APR2005 NAME PRODUCT SPEC 108-14008 APPLICATION SPEC 114-13152 WEIGHT - SEE TABLE		
MATERIAL △	FINISH	Tyco Electronics Corporation Harrisburg, PA 17105-3608 MINIATURE SPRING SOCKET ASSEMBLY SERIES 1 SIZE CAGE CODE DRAWING NO A2 00779 C-5332095 RESTRICTED TO CUSTOMER DRAWING SCALE 20:1 SHEET 1 of 1 REV 0		

AMP 1471-9 REV 31MAR2000

5332095

B

A