

4

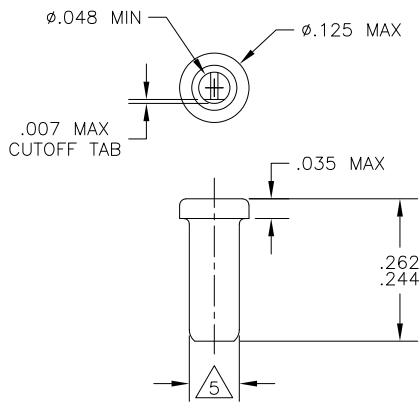
3

2

1

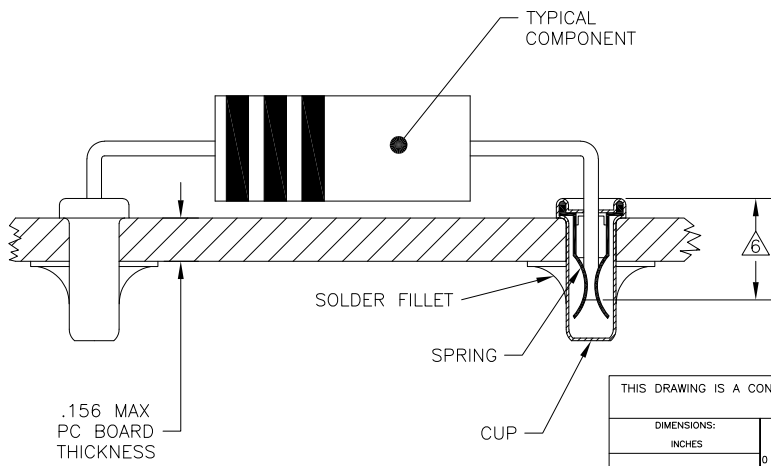
THIS DRAWING IS UNPUBLISHED. RELEASED FOR PUBLICATION
 © COPYRIGHT - By - ALL RIGHTS RESERVED.

LOC	DIST	REVISIONS			
P	LTR	DESCRIPTION	DATE	DWN	APVD
AG	67	A1	REVISED PER ECO-11-004835	11MAR11	RK HMR



- 1 MATERIALS:
CUP: COPPER PER ASTM B 152
SPRING: BERYLLIUM COPPER PER ASTM B 194
 - 2 TIN PLATE PER ASTM B 545 .000080 MIN THICK.
 - 3 GOLD PLATE PER ASTM B 488 .000030 MIN THICK OVER NICKEL PLATE PER QQ-N-290 IN CONTACT AREA.
 - 4 TIN PLATE PER ASTM B 545 .000100 MIN THICK.
 - 5 PART FITS INTO A #43 DRILLED HOLE ($\phi.0890 \pm .0015$) FOR HAND INSERTION, AND A #44 DRILLED HOLE ($\phi.0860 \pm .0015$) FOR MACHINE INSERTION.
 - 6 .145 MIN INSERTION DEPTH REQUIRED FOR A RELIABLE CONNECTION.
7. SPRING TO BE SECURED IN CUP WITH NO SPRING ROTATION PERMISSIBLE.
8. LEAD RANGES AND PERFORMANCE RESULTS:

LEAD RANGES (DIA)	.018-.020	.025-.032	.035-.040
MAX INSERTION FORCE (OZ)	17	37	48
MIN EXTRACTION FORCE (OZ)	1.0	1.5	2.0
MILLIVOLT DROP (mV MAX)	2.00	1.75	1.50



TIN 4	TIN 2	5380598-3
	GOLD 3	5380598-2
CUP	SPRING	PART NO.
PLATING		

THIS DRAWING IS A CONTROLLED DOCUMENT.

DIMENSIONS: INCHES	TOLERANCES UNLESS OTHERWISE SPECIFIED:	DWN J. HAVENER 18OCT2005	18OCT2005	
0 PLC ± -	1 PLC ± -	CHK J. HAVENER 18OCT2005	18OCT2005	
2 PLC ± -	3 PLC ± .015	APVD J. HAVENER 18OCT2005	18OCT2005	
4 PLC ± -	ANGLES ± 1°	NAME	TE Connectivity	
MATERIAL 1	FINISH	PRODUCT SPEC	108-1079	
	SEE TABLE	APPLICATION SPEC	114-1055	
		WEIGHT	-	
		SIZE	A3	RESTRICTED TO
		CAGE CODE	00779	
		DRAWING NO	5380598	
		CUSTOMER DRAWING	SCALE	NTS
		SHEET	1	OF 1
		REV	A1	