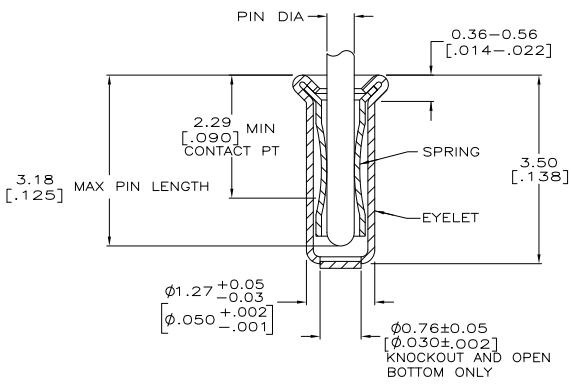
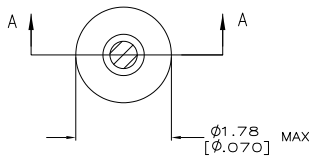


THE DRAWING IS UNPUBLISHED.
 © COPYRIGHT - By -
 RELEASED FOR PUBLICATION
 ALL RIGHTS RESERVED.

| LUC | | DST | | REVISIONS | | | |
|-----|----|-----|----|---------------------------|---------|-----|------|
| FT | 64 | TR | LR | DESCRIPTION | DATE | DRN | APPD |
| | | P | | REVISED PER ECO-11-004835 | 11MAR11 | RK | HMR |



SECTION A-A

- △ TIN PLATE PER ASTM B 545 .000254 [.000100] MIN THICK.
- △ GOLD PLATE PER ASTM B 488 0.00076 [.000030] MIN THICK OVER NICKEL PLATE PER QQ-N-290 0.00028 [.000011] MIN THICK ON CONTACT AREA.
- 3. RECOMMENDED HOLE SIZE, PLATED OR UNPLATED:
 MACHINE INSERTION: 1.32±0.05 [.052±.002]
 HAND INSERTION: 1.32 +0.10 / -0.00 [.052 +.004 / -.000]
- 4. APPLICATION TOOL PART NUMBER:
 MACHINE NO. 682127-3
 INSERTION HEAD NO. 682039-2
- △ TO INSURE PROPER SPRING TENSION DO NOT EXCEED A 0.05 [.002] DIFFERENCE IN PIN DIA WHEN CHANGING TO A SMALLER PIN.
- 6. BOTTOM PLUG KNOCKOUT TOOL PART NUMBER 69729 WITH TIP PART NUMBER 69728.
- △ MATERIAL:
 SPRING: BERYLLIUM COPPER PER ASTM B 194
 EYELET: COPPER PER ASTM B 152
- △ OBSOLETE PARTS: OBSOLETE CIS STREAMLINING PER D.RENAUD/D.SINISI

| OPEN | 0.56-0.64 [.022-.025] | TIN △ 1 | GOLD △ 2 | 4-5331272-3 |
|---|-------------------------|---|----------|-------------|
| KNCKOUT | 0.46-0.53 [.018-.021] | | | TIN △ 1 |
| CLOSED | 0.56-0.64 [.022-.025] | TIN △ 1 | GOLD △ 2 | 3-5331272-5 |
| | | TIN △ 1 | GOLD △ 2 | 2-5331272-7 |
| BOTTOM TYPE | RECOMMENDED PIN DIA △ 5 | TIN △ 1 | GOLD △ 2 | 2-5331272-5 |
| | | EYELET SPRING | GOLD △ 2 | 2-5331272-3 |
| FINISH | | PART NO | | |
| THIS DRAWING IS A CONTROLLED DOCUMENT. | | TE Connectivity | | |
| DIMENSIONS: TO DIMENSIONS UNLESS OTHERWISE SPECIFIED: | | MINIATURE SPRING SOCKET ASSEMBLY SERIES 2 | | |
| MATERIAL: SEE TABLE | | CUSTOMER DRAWING | | |