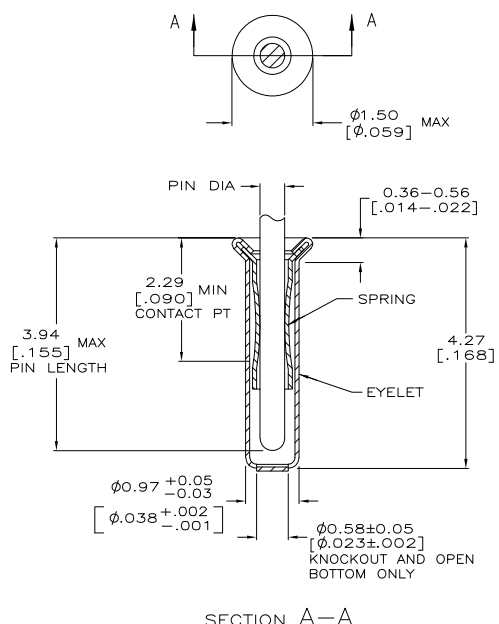


THIS DRAWING IS UNPUBLISHED. RELEASED FOR PUBLICATION
 BY TYCO ELECTRONICS CORPORATION. ALL RIGHTS RESERVED.

LOC	QST	REVISIONS			
#	LR	DESCRIPTION	DATE	DM	APD
0		PER EC-0511-0022-05	20APR2005	JA	JGH



- 1. TIN PLATE PER ASTM B 545 .000254 [.000100] MIN THICK.
- 2. GOLD PLATE PER ASTM B 488, 0.00076 [.000030] MIN THICK OVER NICKEL PLATE PER QQ-N-290 0.00028 [.000011] MIN THICK ON CONTACT AREA.
- 3. RECOMMENDED HOLE SIZE, PLATED OR UNPLATED:
 MACHINE INSERTION: 1.04±0.05 [.041±.002]
 HAND INSERTION: 1.02 +0.10 [-0.00] [.040 +.004]
- 4. APPLICATION TOOL PART NUMBER:
 MACHINE NO. 682127-2
 INSERTION HEAD NO. 682039-1
- 5. TO INSURE PROPER SPRING TENSION DO NOT EXCEED A 0.10 [.004] DIFFERENCE IN PIN DIA WHEN CHANGING TO A SMALLER PIN.
- 6. BOTTOM PLUG KNOCKOUT TOOL PART NUMBER 69729 WITH TIP PART NUMBER 69728.

CLOSED	0.33-0.51 [.013-.020]	TIN	TIN	5050935-2
BOTTOM TYPE	RECOMMENDED PIN DIA	EYELET	GOLD	5050935-1
		FINISH		PART NO
THIS DRAWING IS A CONTROLLED DOCUMENT. DM ALCORTA - 20APR2005 CHK J. HAVENER 20APR2005 APD J. HAVENER 20APR2005 Tyco Electronics Corporation Harrisburg, PA 17105-3608				
DIMENSIONS: min. (INCHES) DIMENSIONS IN PARENTHESES: OTHER SIZE SPECIFIED:		PRODUCT SPEC: 108-14008 APPLICATION SPEC: 114-13152 WEIGHT: - FINISH: SEE TABLE		
MATERIAL: SPRING: BE CU SEE TABLE		SIZE: A2 CASE CODE: 00779 DRAWING NO: 5050935		RESTRICTED TO: - SCALE: 20:1 SHEET: 1 OF 1 REV: Q

JMP 1471-9 REV 3104R2000