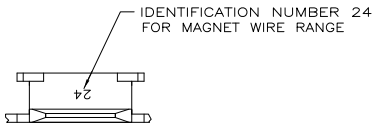
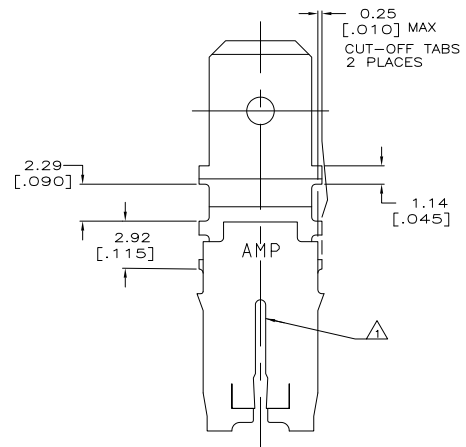
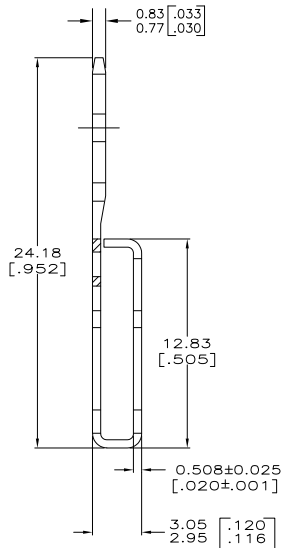
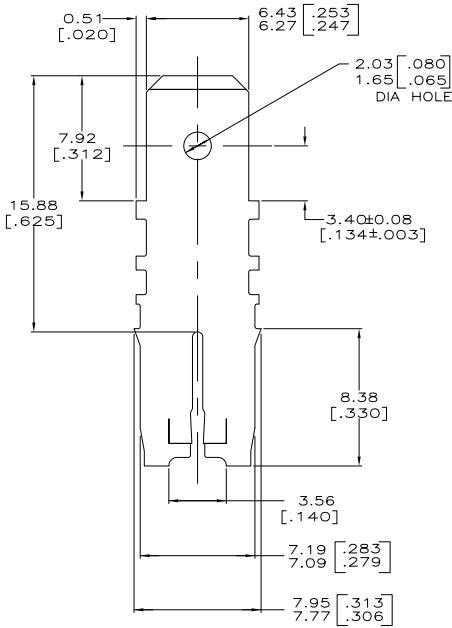


THIS DRAWING IS UNPUBLISHED. RELEASED FOR PUBLICATION  
 © COPYRIGHT BY TYCO ELECTRONICS CORPORATION. ALL INTERNATIONAL RIGHTS RESERVED.

LOC	QTY	REV	DESCRIPTION	DATE	BY	APP
AF	50	D1	REVISED PER ECR-08-021819	11SEP08	HMR	KR



- ⚠️ SLOT ACCEPTS 0.91-1.15mm [#19-#17] AWG COPPER MAGNET WIRE. 2 WIRES OF THE SAME SIZE MAX PER SLOT.
- 2 AFTER INSERTION INTO PLASTIC HOLDER TAB PORTION MUST BE BENT OVER 45° TO 90° OR POTTED-IN TO PREVENT PULL-OUT WHEN MATING RECEPTACLE IS DISCONNECTED.
- ⚠️ 0.002032 [.000080] MIN TIN PLATE.
- ⚠️ VARNISH RESIST COATING OVER 0.002032 [.000080] MIN TIN PLATE
- ⚠️ PRELIMINARY - NOT FOR PRODUCTION



⚠️	⚠️ 63598-2
⚠️	63598-1
FINISH	PART NO

THIS DRAWING IS A CONTROLLED DOCUMENT.		DWG: PHILLIP M. FORTNEY 25/05/04 DWG: MICHAEL S. FEHER 25/05/04 APD: NELSON E. NEFF 25/05/04	Tyco Electronics Corporation Harrisburg, PA 17105-3608
DIMENSIONS: mm [INCHES]	TOLERANCES UNLESS OTHERWISE SPECIFIED: 0 P/C ± - 1 P/C ± - 2 P/C ± 0.25 [.010] 3 P/C ± - 4 P/C ± - ANGLES ± -	PROJECT SPEC: 108-2053 APPLICATION SPEC: 114-2066	TAB, LOOSE PIECE, 6.35 [.250] FASTON, MAG-MATE™
MATERIAL: 4M PRE-MILLED BRASS	FINISH: SEE TABLE	WEIGHT: -	RESTRICTED TO: -
CUSTOMER DRAWING		SIZE: A2	CAGE CODE: 00779 DRAWING NO: 63598 SCALE: 6:1 SHEET: 1 of 1 REV: D1

1471-9 (1/08)

63598

A