

4

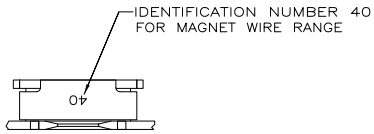
3

2

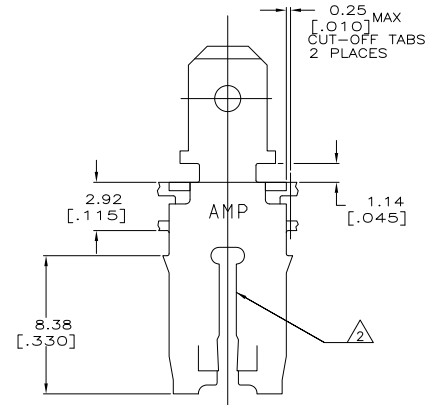
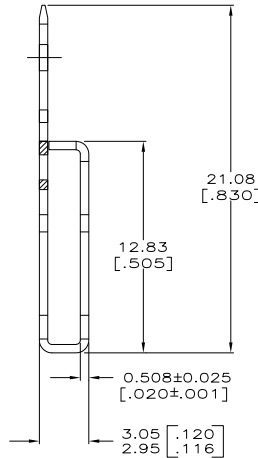
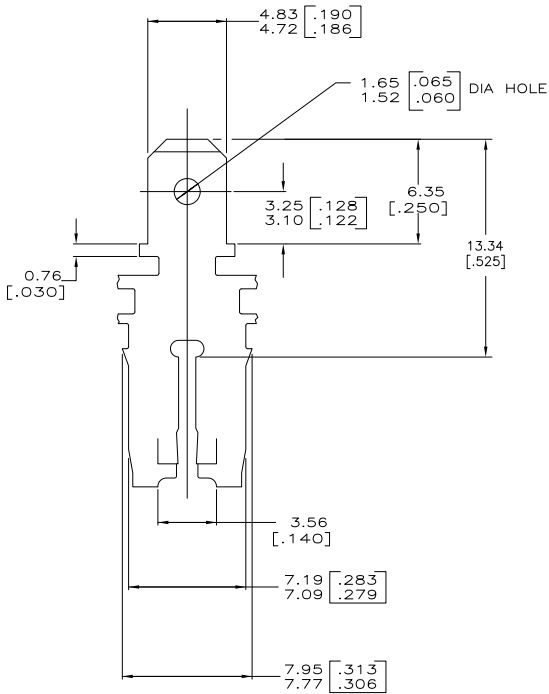
1

THIS DRAWING IS UNPUBLISHED. RELEASED FOR PUBLICATION.  
 BY TYCO ELECTRONICS CORPORATION. ALL INTERNATIONAL RIGHTS RESERVED.

| LOC | DIST | REVISIONS   |                           |                |
|-----|------|-------------|---------------------------|----------------|
| F   | LR   | DESCRIPTION | DATE                      | BY             |
| AF  | 50   | B1          | REVISED PER ECR-09-002564 | 12FEB09 HMR KR |



- 1 CONTINUOUS STRIP ON REELS WITH TERMINALS LOCATED ON 8.38±0.08 [.330±.003] CENTERS.
- 2 SLOT TERMINATES A SINGLE MAGNET WIRE ONLY. COPPER RANGE: 1.45-1.29mm [#15-#16] AWG.
- 3 AFTER INSERTION INTO PLASTIC HOLDER TAB PORTION MUST BE BENT OVER 45° TO 90° OR POTTED-IN TO PREVENT PULL-OUT WHEN MATING RECEPTACLE IS DISCONNECTED.
- 4 VARNISH RESIST OVER 0.002032 [.000080] MIN TIN.



63666-1  
PART NO.

|  |  |                             |   |
|--|--|-----------------------------|---|
| THIS DRAWING IS A CONTROLLED DOCUMENT. |  | DRW MICHAEL S. FEHR 8/20/92 | Tyco Electronics Corporation<br>Harrisburg, PA 17105-3608 |
|  |  | CHK JEFF R. RUTH 8/21/92    |   |
| DIMENSIONS: mm [INCHES]                |  | APPC NELSON E. NEFF 8/28/92 | NAME  |
| TOLERANCES UNLESS OTHERWISE SPECIFIED: |  | PRODUCT SPEC: 108-2012      | SIZE CASE CODE DRAWING NO                                 |
| 0 P.L.C. ± -                           |  | APPLICATION SPEC: 114-2066  | RESTRICTED TO   |
| 1 P.L.C. ± -                           |  | WEIGHT -                    | A2 00779 C-63666  |
| 2 P.L.C. ± 0.25 (010)                  |  | MATERIAL H03 BRASS          | SCALE 6:1 SHEET 1 of 1 REV B1                             |
| 3 P.L.C. ± -                           |  | FINISH                      |   |
| 4 P.L.C. ± -                           |  |                             |   |
| ANGLES ± -                             |  |                             |   |