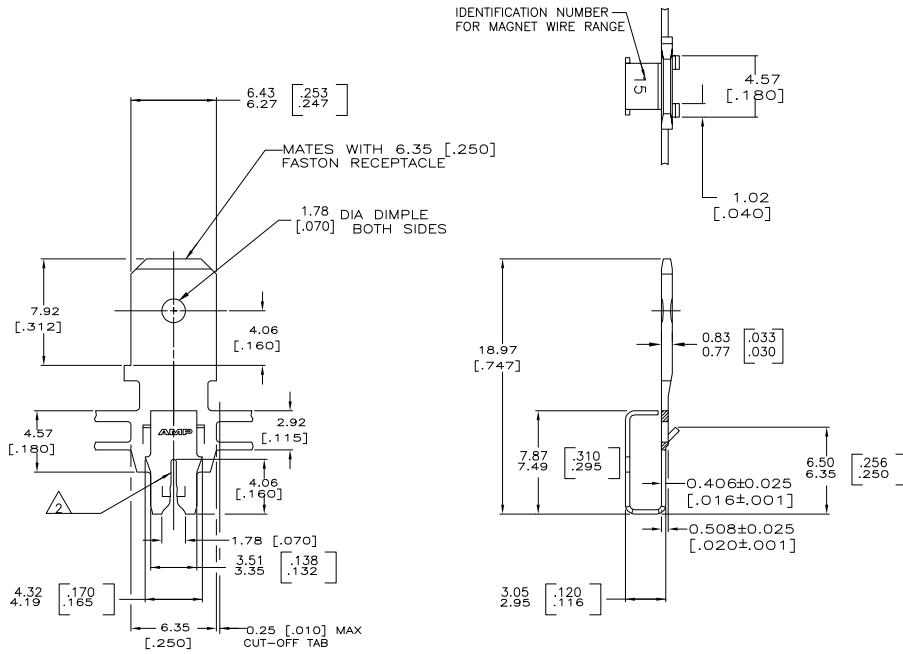


THIS DRAWING IS UNPUBLISHED. RELEASED FOR PUBLICATION  
 © COPYRIGHT BY TYCO ELECTRONICS CORPORATION. ALL RIGHTS RESERVED.

LOC	QST	REVISIONS			
TR	LR	DESCRIPTION	DATE	DR	APP
AF	50	G	REVISED PER ECR-06-010412	08NOV06	HMR KR

- 1 CONTINUOUS STRIP ON REELS WITH TERMINALS LOCATED ON  $8.38 \pm 0.08$  [.330 ± .003] CENTERS.
- 2 SLOT TERMINATES A SINGLE COPPER MAGNET WIRE. WIRE RANGE: 0.64-0.81mm [#22-#20] AWG.
- 3 0.002032 [.000080] MIN TIN PLATE.



	082 PRE-MILLED BRASS	63601-2
OBSELETE	<del>082 PRE-MILLED BRASS</del>	<del>63601-2</del>
	MATERIAL	PART NUMBER

THIS DRAWING IS A CONTROLLED DOCUMENT.		DRN MICHAEL S. FEHER 14AN2003	Tyco Electronics Corporation Harrisburg, PA 17105-3608																									
DIMENSIONS: mm [INCHES]		DRP KURT A. RANDOLPH 14AN2003	TYPICAL TAB, 6.35 [.250] FASTON, 300 SERIES MAG-MATE																									
TOLERANCES UNLESS OTHERWISE SPECIFIED:		DRS KURT A. RANDOLPH 14AN2003	SIZE A2	QTY 00779																								
<table border="1"> <tr><td>Ø</td><td>PIC</td><td>±</td><td>-</td></tr> <tr><td>□</td><td>PIC</td><td>±</td><td>-</td></tr> <tr><td>□</td><td>PIC</td><td>±</td><td>0.25 [.010]</td></tr> <tr><td>□</td><td>PIC</td><td>±</td><td>-</td></tr> <tr><td>□</td><td>PIC</td><td>±</td><td>-</td></tr> <tr><td>□</td><td>PIC</td><td>±</td><td>-</td></tr> </table>		Ø	PIC	±	-	□	PIC	±	-	□	PIC	±	0.25 [.010]	□	PIC	±	-	□	PIC	±	-	□	PIC	±	-	APPROVAL SPEC 114-2094	DRAWING NO 00779	RESTRICTED TO -
Ø	PIC	±	-																									
□	PIC	±	-																									
□	PIC	±	0.25 [.010]																									
□	PIC	±	-																									
□	PIC	±	-																									
□	PIC	±	-																									
MATERIAL SEE TABLE	FINISH 3	WEIGHT -	CAGE CODE 00779	DRAWING NO 00779																								
CUSTOMER DRAWING		SCALE 5:1		SHEET 1 of 1																								

AMP 1471-B REV 31MMR2000

63601

A