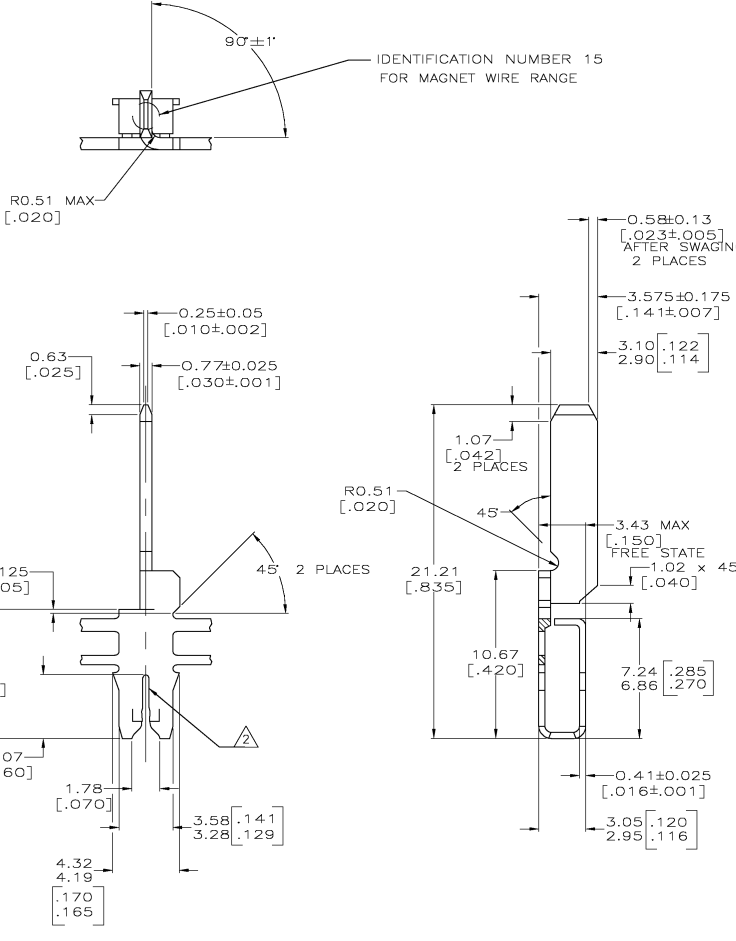
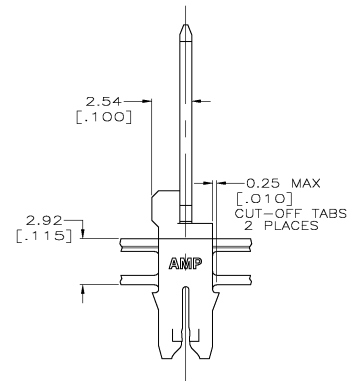


THE DRAWING IS UNPUBLISHED. RELEASED FOR PUBLICATION
 BY TYPHO ELECTRONICS CORPORATION. ALL RIGHTS RESERVED.

LOC	DIST	REVISIONS			
P	LTR	DESCRIPTION	DATE	BY	APPD
C	REV PER	063A-0010-04	10JAN04	JR	KR



- 1 CONTINUOUS STRIP ON REELS WITH TERMINALS LOCATED ON 8.38±0.076 [.330±0.003] CENTERS
- 2 SLOT ACCEPTS 0.72mm DIA[#21] AWG COPPER MAGNET WIRE
- 3 REFER TO DWG 87-1039-3 FOR ADDITIONAL CAVITY INFORMATION (MODIFIED DEPTH)
- 4 PRELIMINARY - NOT FOR PRODUCTION.
- 5 0.002032 [.000080] MIN TIN PLATE
- 6 0.002032 [.000080] MIN TIN PLATE OVER 0.001270 [.000050] MIN NICKEL PLATE



WELD	63463-3
SPLICE FREE	63463-2
WELD	63641-1
SPLICE	PART NUMBER

THIS DRAWING IS A CONTROLLED DOCUMENT.		REV	24JAN97	 Tyco Electronics Corporation Harrisburg, Pa, 17105-3508
DRAWN BY: R. GRZYBOWSKI		CHK	34JAN97	
DESIGNED BY: M. S. FEHER		APPD	34JAN97	TAB, 3.00 [.118] CONNECTING, MAG-MATE
CHECKED BY: N. P. NEFF		DATE	108-2012	
MATERIAL: PRE-MILLED BRASS		FINISH	SEE TABLE	RESTRICTED TO: -
CUSTOMER DRAWING		SCALE	6:1	SHEET 1 OF 1 REV G

AMP 1471-9 REV 31MAR2000

63463