

4

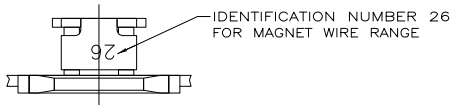
3

2

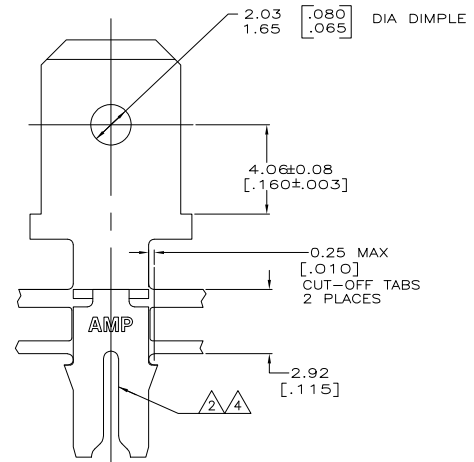
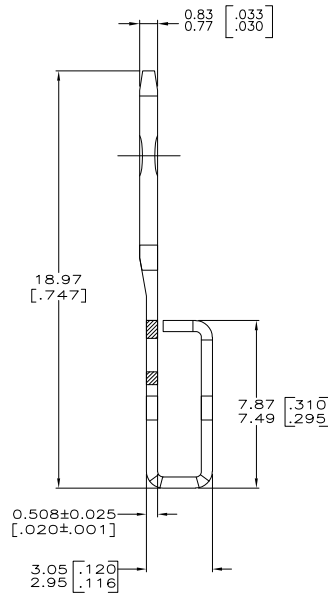
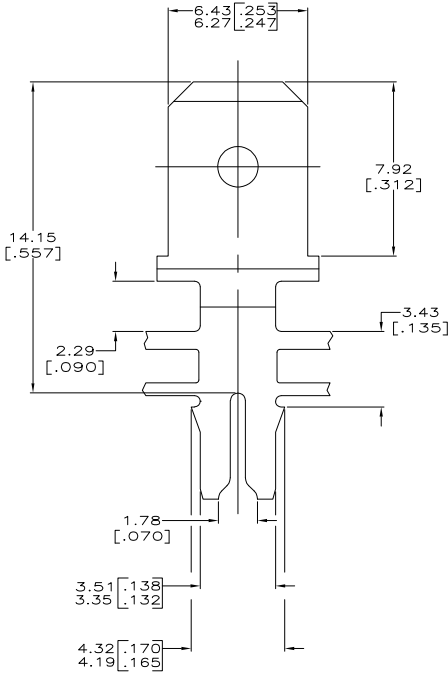
1

THIS DRAWING IS UNPUBLISHED. RELEASED FOR PUBLICATION
 © COPYRIGHT BY TYCO ELECTRONICS CORPORATION. ALL RIGHTS RESERVED.

LOC		DIBT		REVISIONS			
F	LR	DESCRIPTION	DATE	BY	APP'D		
AF	50						
		D	REVISED PER ECR-06-010412			08NOV06	HMR KR



- 1 CONTINUOUS STRIP ON REELS WITH TERMINALS LOCATED ON 8.38 ± 0.08 [.330 ± .003] CENTERS.
- 2 SLOT TERMINATES A SINGLE 0.81-1.02mm [#20-#18] AWG BARE SOLID COPPER WIRE.
- 3 AFTER INSERTION INTO PLASTIC HOLDER TAB PORTION MUST BE BENT OVER 45° TO 90° OR POTTED-IN TO PREVENT PULL-OUT WHEN MATING RECEPTACLE IS DISCONNECTED.
- 4 SLOT ALSO TERMINATES A SINGLE 0.81mm [#20] AWG OR A 0.81 [.032] DIA COPPER CLAD STEEL WIRE PER ASTM B-452-67 CLASS 40 A.



63200-1
 PART NUMBER

THIS DRAWING IS A CONTROLLED DOCUMENT.		DRW MICHAEL S. FEHNER	TYCO Electronics Corporation
DIMENSIONS: mm [INCHES]		CHK RICHARD GRZYBOWSKI	Tyco Electronics Corporation Harrisburg, PA 17105-3608
TOLERANCES UNLESS OTHERWISE SPECIFIED:		APP NELSON E. NEFF	TERMINAL, TAB, FASTON, MAG-MATE™
0 PLG ± .010	1 PLG ± .015	PROJ 108-2012	6.35 [.250]
2 PLG ± .025 [0.10]	3 PLG ± .030	APP 114-2046	SIZE CASE CODE DRAWING NO
4 PLG ± .040	ANGLES ± .5°	WEIGHT -	A2 00779 C=63200
MATERIAL 4M PRE-MILLED BRASS	FINISH 0.002032 [000080] MIN TIN	CUSTOMER DRAWING	RESTRICTED TO
			SCALE 8:1 SHEET 1 of 1 REV D

AMP 1471-9 REV 31MM2000

63200

A