

4

3

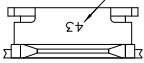
2

1

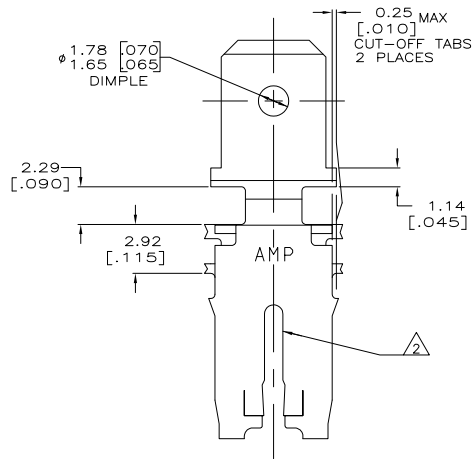
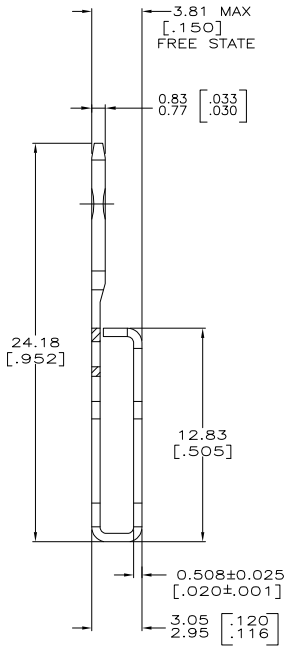
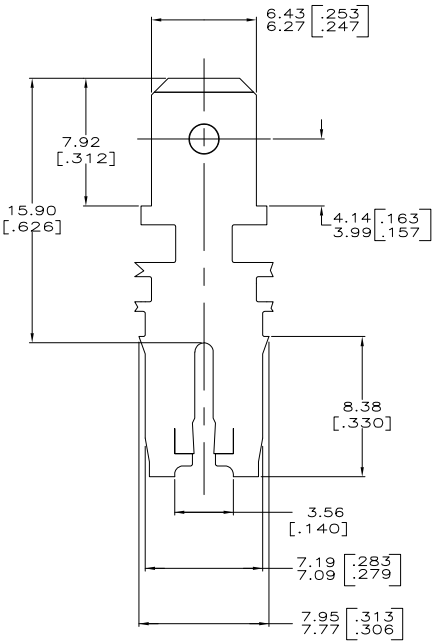
THIS DRAWING IS UNPUBLISHED. RELEASED FOR PUBLICATION
 BY TYCO ELECTRONICS CORPORATION. ALL RIGHTS RESERVED.

LOC		DIBT		REVISIONS			
F	LR	DESCRIPTION	DATE	BY	APP'D		
AF	50						
		D	REVISED PER ECR-06-010427	01SEP06	HMR	KR	

IDENTIFICATION NUMBER 43
 FOR MAGNET WIRE RANGE



- 1 CONTINUOUS STRIP ON REELS WITH TERMINALS LOCATED ON 8.38±0.08 [.330±.003] CENTERS.
- 2 SLOT ACCEPTS 1.63-1.83mm [#14-#13] AWG COPPER MAGNET WIRE. TWO 1.63mm [#14] AWG COPPER MAGNET WIRES ACCEPTABLE AT CAVITY ANVIL HEIGHT OF 3.94-4.19 [.155-.165].
- 3 AFTER INSERTION INTO PLASTIC HOLDER MAG-MATE MUST BE POTTED-IN TO PREVENT PULL-OUT WHEN MATING RECEPTACLE IS DISCONNECTED.
- 4 VARNISH RESIST OVER 0.002032 [.000080] MIN TIN PLATE.



63371-1
 PART NUMBER

THIS DRAWING IS A CONTROLLED DOCUMENT.		DRW: MICHAEL S. FEYER 18MAY1999	Tyco Electronics Corporation Harrisburg, PA 17105-3608	
DIMENSIONS: mm [INCHES]		CHK: JEFF R. RUTH 07JAN1999	APPC: KURT A. RANDOLPH	
TOLERANCES UNLESS OTHERWISE SPECIFIED:		PRODUCT SPEC: 108-2053	TAB, 6.35[.250] FASTON,™ 500 SERIES MAG-MATE™	
MATERIAL: OR2 PRE-MILLED BRASS		APPLICATION SPEC: 114-2066	SIZE: A2	CAGE CODE: 00779
FINISH: 4		WEIGHT: -	DRAWING NO: C=63371	RESTRICTED TO: -
		CUSTOMER DRAWING	SCALE: 6:1	SHEET: 1 of 1

AMP 1471-9 REV 31MM2000

63371

A