

4

3

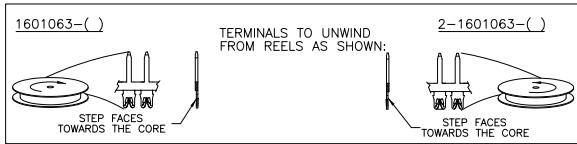
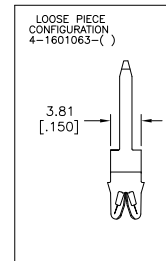
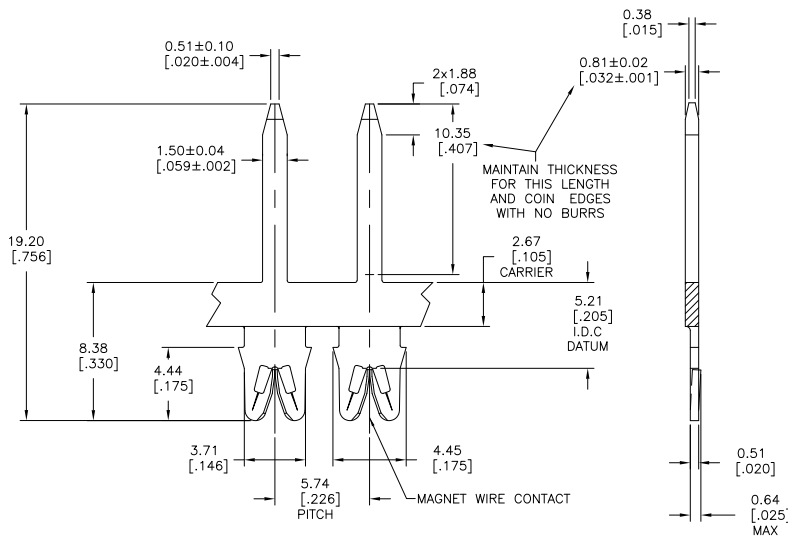
2

1

THIS DRAWING IS UNPUBLISHED. RELEASED FOR PUBLICATION. BY TYCO ELECTRONICS CORPORATION. ALL INTERNATIONAL RIGHTS RESERVED.

LOC	DIST	REVISIONS			
D2	50	F	LR	DESCRIPTION	DATE
		D3		REVISED PER ECR-10-013696	19AUG10 HMR GJ

- 1 SPECIFICATIONS:  
MAGNET WIRE #18- #34 AWG  
1.02 mm(.040)- 0.16 mm(.006) DIA COPPER.
- 2 POCKET RECOMMENDATION: #1601431
- 3 TERMINAL APPLICATION TO COMPLY WITH TYCO ELECTRONICS SPECIFICATION 114-13166 FIGURE 10.
- 4 PRELIMINARY - NOT FOR PREPRODUCTION
- 5 OBSOLETE PARTS: OBSOLETE CIS STREAMLINING PER D.RENAUD/D.SINISI.
- 6 TWO(2) TERMINALS SHOWN FOR ILLUSTRATION PURPOSES ONLY.



5

	POST TIN OVER NICKEL		4-1601063-3
	POST TIN OVER NICKEL		1601063-3
5	OBSOLETE	PRE TIN PLATE	031-129-021 4-1601063-2
		PRE TIN PLATE	131-130-021 2-1601063-2
		PRE TIN PLATE	131-129-021 1601063-2
FINISH		REFERENCE PART NUMBER	TE PART NUMBER
THIS DRAWING IS A CONTROLLED DOCUMENT.		Tyco Electronics Corporation Harrisburg, PA 17105-3608	
DIMENSIONS: mm [INCHES]		TOLERANCES UNLESS OTHERWISE SPECIFIED:	
0 PLG ± .		1 PLG ± .	
1 PLG ± .		2 PLG ± .	
2 PLG ± .		3 PLG ± .	
3 PLG ± .		4 PLG ± .	
4 PLG ± .		ANGLES ± °	
MATERIAL: BRASS, 3/4 HARD		FINISH: SEE TABLE	
DRAWN: J. WELLS 11JAN2002		CHK: M. FEHR 11JAN2002	
APPROVED: K. RANDOLPH 11JAN2002		NAME: M. FEHR	
PRODUCT SPEC: 108-2085		APPLICATION SPEC: 3	
WEIGHT: -		SIZE: A2	
CUSTOMER DRAWING		CAGE CODE: 00779	
		DRAWING NO: 1601063	
		RESTRICTED TO: -	
		SCALE: 6:1	
		SHEET: 1 of 1	
		REV: D3	