

4

3

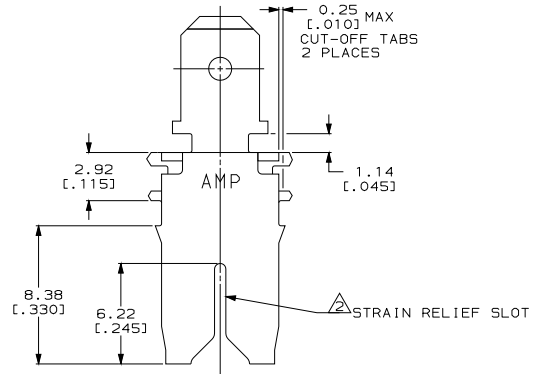
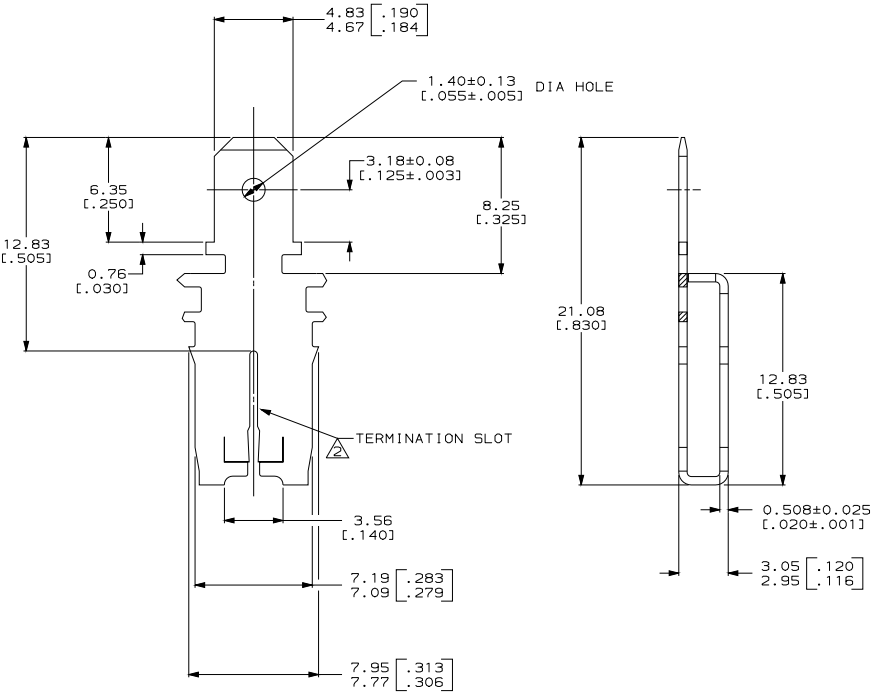
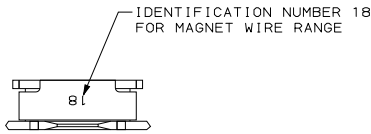
2

1

THIS DRAWING IS UNPUBLISHED. RELEASED FOR PUBLICATION  
 © COPYRIGHT 19 BY AMP INCORPORATED. ALL RIGHTS RESERVED.

LOC	DIST	REVISIONS			
		REV	DESCRIPTION	DATE	BY
AF	50	C	REV PER Q110-0373-97	10SEP97	RG NN

- CONTINUOUS STRIP ON REELS WITH TERMINALS LOCATED ON 8.38±0.08 [.330±.003] CENTERS.
- △ SLOT TERMINATES EITHER A SINGLE OR DOUBLE MAGNET WIRE OF THE SAME SIZE AND TYPE. COPPER RANGE: 0.64-0.81mm [#22-#20] AWG.
- AFTER INSERTION INTO PLASTIC HOLDER, TAB PORTION MUST BE BENT OVER 45° TO 90° OR POTTED-IN TO PREVENT PULL-OUT WHEN MATING RECEPTACLE IS DISCONNECTED.
- THIS DRAWING IS RESTRICTED TO G.S. ELECTRIC



PROPOSED DESIGN  
 NOT RELEASED FOR  
 PRODUCTION

63983-1  
 PART NUMBER

THIS DRAWING IS A CONTROLLED DOCUMENT.		DWG: MICHAEL S. FENNER	DATE: 08APR97
DRAWN BY: RICHARD GRZYBOWSKI		CHK: RICHARD GRZYBOWSKI	DATE: 08APR97
DESIGNED BY: NELSON E. NEFF		CHK: NELSON E. NEFF	DATE: 08APR97
PRODUCT SPEC: 108-2053		APPLICATION SPEC: 114-2066	WEIGHT: -
MATERIAL: 4M BRASS		FINISH: 0.002032 [.000080]	MIN TIN PER MIL-T-10727
CUSTOMER DRAWING		SCALE: 6:1	SHEET 1 OF 1 REV C

**AMP** AMP Incorporated  
 Harrisburg, PA 17105-3608

TAB, 4.75[.187] FASTON™  
 MAG-MATE™

63983

A