

4

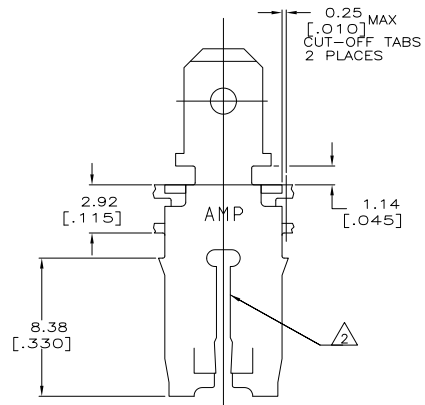
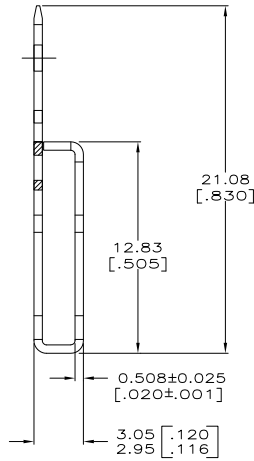
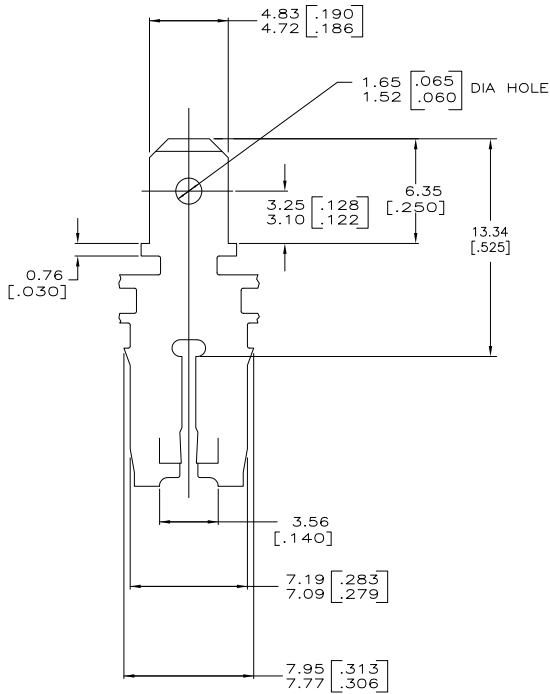
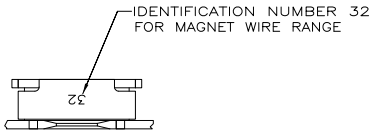
3

2

1

THIS DRAWING IS UNPUBLISHED. RELEASED FOR PUBLICATION.  
 © COPYRIGHT BY TYCO ELECTRONICS CORPORATION. ALL INTERNATIONAL RIGHTS RESERVED.

LOC	DIST	REVISIONS		DATE	BY	APP'D
AF	50	F	LR			
		B1	REVISED PER ECR-09-002564	12FEB09	HMR	KR



- CONTINUOUS STRIP ON REELS WITH TERMINALS LOCATED ON 8.38±0.08 [.330±.003] CENTERS.
- SLOT TERMINATES A SINGLE MAGNET WIRE ONLY. COPPER RANGE: 1.09-1.29mm [#17.5-#16] AWG.
- AFTER INSERTION INTO PLASTIC HOLDER TAB PORTION MUST BE BENT OVER 45° TO 90° OR POTTED-IN TO PREVENT PULL-OUT WHEN MATING RECEPTACLE IS DISCONNECTED.
- VARNISH RESIST OVER 0.002032 [.00080] MIN TIN

63667-1  
PART NO

THIS DRAWING IS A CONTROLLED DOCUMENT.		DRW MICHAEL S. FEHR 8/20/92	Tyco Electronics Corporation Harrisburg, PA 17105-3608	
DIMENSIONS: mm [INCHES]		CHK JEFF R. RUTH 8/21/92	NAME	
TOLERANCES UNLESS OTHERWISE SPECIFIED:		APP'D NELSON E. NEFF 8/28/92	TAB, 4.75 [.187] FASTON™ MAG-MATE™	
0 PLG ± -		PRODUCT SPEC 108-2012	SIZE CASE CODE DRAWING NO	
1 PLG ± -		APPLICATION SPEC 114-2066	A2 00779 C=63667	
2 PLG ± 0.25 (.010)		WEIGHT -	RESTRICTED TO	
3 PLG ± -		MATERIAL H03 BRASS	-	
4 PLG ± -		FINISH	-	
ANGLES ± -		4	CUSTOMER DRAWING	
			SCALE 6:1 SHEET 1 of 1 REV B1	

1471-9 (1/08)

63667

A