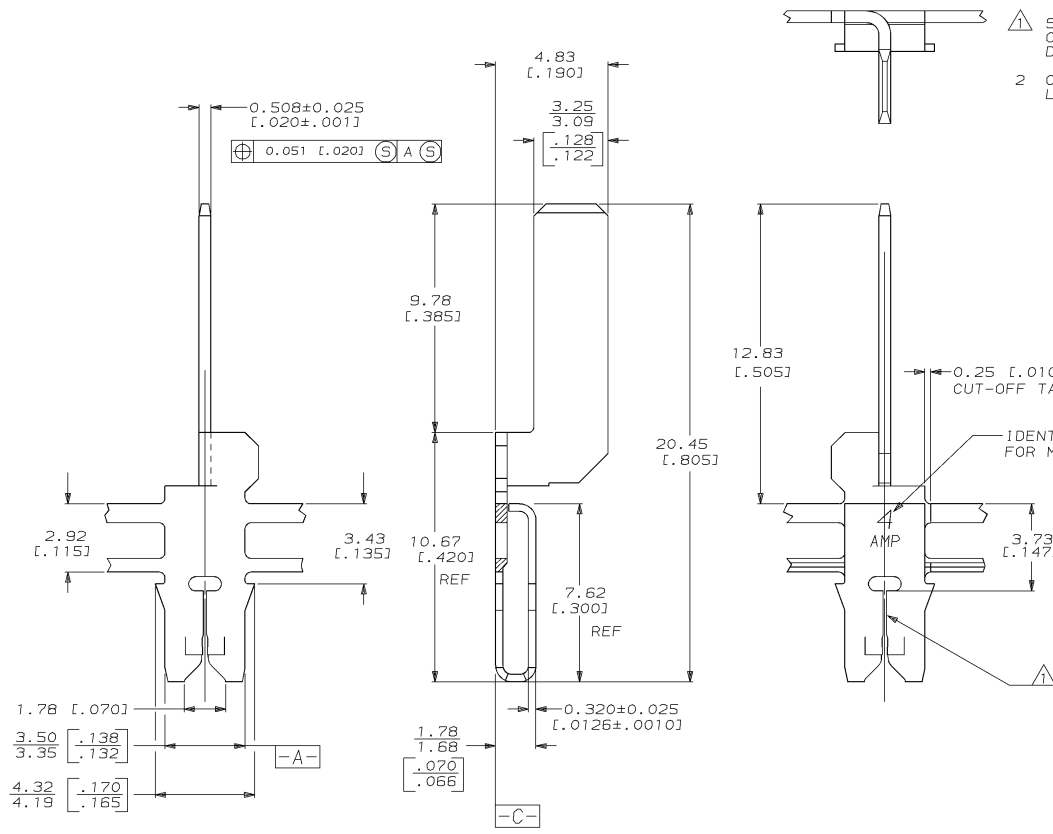


DRAWING MADE IN THIRD ANGLE PROJECTION
 THIS DRAWING IS UNPUBLISHED. RELEASED FOR PUBLICATION .19
 © COPYRIGHT 19 BY AMP INCORPORATED. ALL INTERNATIONAL RIGHTS RESERVED.

LOC		DIST		ZONE		LTR		REVISIONS		DATE	APPD
AF	50	P	F					C	REV PER 0710-0522-95	11/DEC/95	RG/NN



△ SLOT TERMINATES 0.18-0.23mm [#33-#31] AWG COPPER MAGNET WIRE EITHER SINGLE OR DOUBLE OF THE SAME SIZE.
 2 CONTINUOUS STRIP ON REELS WITH TERMINALS LOCATED ON 8.38 ± 0.08 [0.330 ± 0.003] CENTERS.

63806-1
 PART NO

DO NOT SCALE PRINT. UNLESS SPECIFIED DIMENSIONS IN mm [INCHES] TOLERANCES ON: 1 PLC DEC ± 0.25 [0.010] 2 PLC DEC ± - 3 PLC DEC ± - ANGLES ± -		DR 19/SEP/94 MICHAEL S. FEHER	AMP AMP Incorporated Harrisburg, PA 17105-3608	
MATERIAL #4M PRE-MILLED BRASS	APPD 21/SEP/94 TERRY L. SHUTTER	CHK 21/SEP/94 JEFF R. RUTH	NAME TERMINAL, TAB, 3.18 [0.125], MAG-MATE™	
FINISH 0.002032 [0.000080] MIN TIN PER MIL-T-10727	PRODUCT SPEC 108-2012	APPD 21/SEP/94 NELSON E. NEFF	SIZE C 00779	DRAWING NO C-63806
	APPLICATION SPEC 114-2046		SCALE 8:1	SHEET 1 OF 1

THIS DRAWING IS A CONTROLLED DOCUMENT FOR AMP INCORPORATED. IT IS SUBJECT TO CHANGE AND THE CONTROLLING ENGINEERING ORGANIZATION SHOULD BE CONTACTED FOR THE LATEST REVISION.

AMP 1471-6 REV 3-92
 11-DEC-95 08:32:49 amq21428 /ws/dept2127/dwg2127/u_maa-mate/u_300

CUSTOMER DRAWING