

4

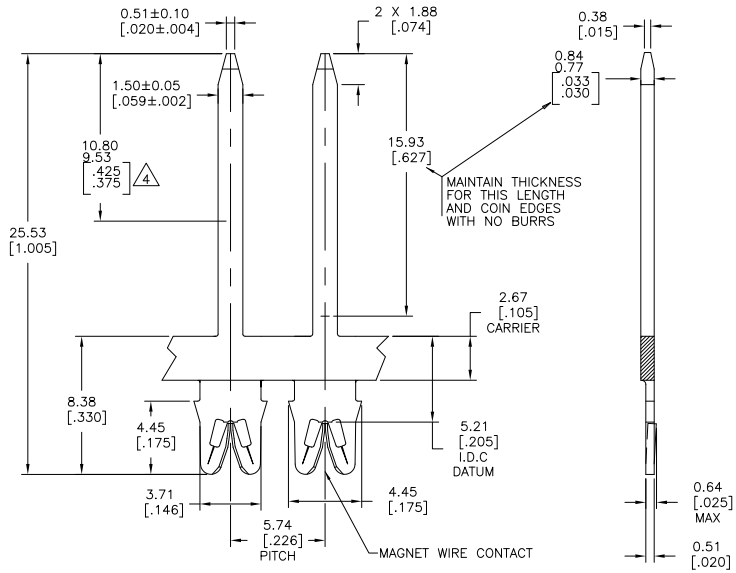
3

2

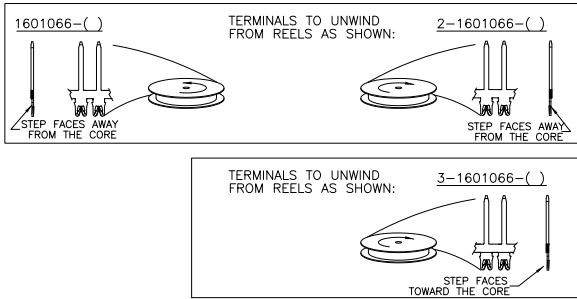
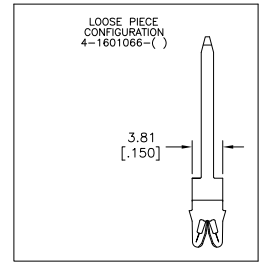
1

THIS DRAWING IS UNPUBLISHED. RELEASED FOR PUBLICATION.
 © COPYRIGHT BY TYCO ELECTRONICS CORPORATION. ALL INTERNATIONAL RIGHTS RESERVED.

LOC	DIST	REVISIONS			
F	LNK	DESCRIPTION	DATE	BY	APPD
AF	50	E2	REVISED PER ECR-09-005398	11MAR09	HMR GJ



- 1 SPECIFICATIONS: MAGNET WIRE #18 - #34 AWG 1.02(.040") - 0.16(.006") DIA COPPER.
- 2 POCKET RECOMMENDATION: # 1601431
- 3 TERMINAL APPLICATION TO COMPLY WITH TYCO ELECTRONICS SPECIFICATION 114-13166 FIGURE 10
- 4 SELECTIVELY POST PLATED WITH GOLD FOR THE LENGTH INDICATED. ENTIRE TERMINAL IS NICKEL UNDERPLATED.
- 5 PRELIMINARY - NOT FOR PRODUCTION



PRE-TIN PLATE OVER COPPER UNDERPLATE	-	4-1601066-2
4	-	3-1601066-3
PRE-TIN PLATE OVER COPPER UNDERPLATE	-	3-1601066-2
PRE-TIN PLATE OVER COPPER UNDERPLATE	131-134-014	2-1601066-2
PRE-TIN PLATE OVER COPPER UNDERPLATE	131-133-014	1601066-2
FINISH		TE PART NUMBER
THIS DRAWING IS A CONTROLLED DOCUMENT.		
DIMENSIONS: mm [INCHES]		DATE: 11JAN2002
TOLERANCES UNLESS OTHERWISE SPECIFIED:		DATE: 11JAN2002
0 PLG ±	DATE: 11JAN2002	DATE: 11JAN2002
1 PLG ± 0.25(010)	DATE: 11JAN2002	DATE: 11JAN2002
2 PLG ± 0.13(.005)	DATE: 11JAN2002	DATE: 11JAN2002
3 PLG ±	DATE: 11JAN2002	DATE: 11JAN2002
4 PLG ±	DATE: 11JAN2002	DATE: 11JAN2002
ANGLES ±	DATE: 11JAN2002	DATE: 11JAN2002
MATERIAL: BRASS, 3/4 HARD	FINISH: SEE TABLE	DATE: 11JAN2002
WEIGHT: -		DATE: 11JAN2002
CUSTOMER DRAWING		DATE: 11JAN2002
REFERENCE PART NUMBER		TE PART NUMBER
K. RANDOLPH		TE PART NUMBER
108-2085		TE PART NUMBER
APPLICATION SPEC: 3		TE PART NUMBER
SIZE: A2		TE PART NUMBER
CAGE CODE: 00779		TE PART NUMBER
DRAWING NO: 1601066		TE PART NUMBER
RESTRICTED TO: -		TE PART NUMBER
SCALE: 6:1		TE PART NUMBER
SHEET: 1 of 1		TE PART NUMBER
REV: E2		TE PART NUMBER