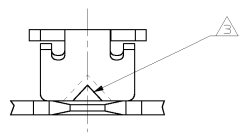
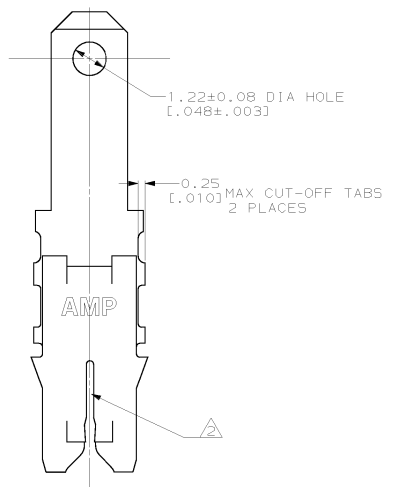
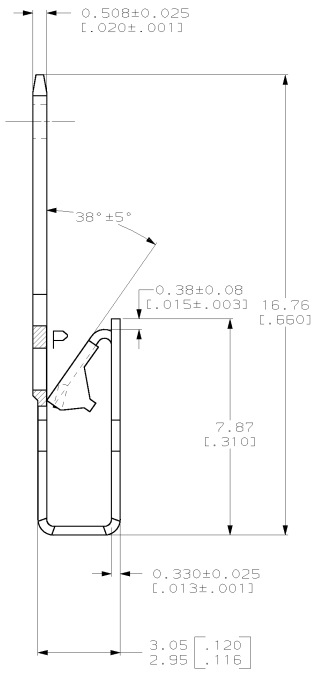
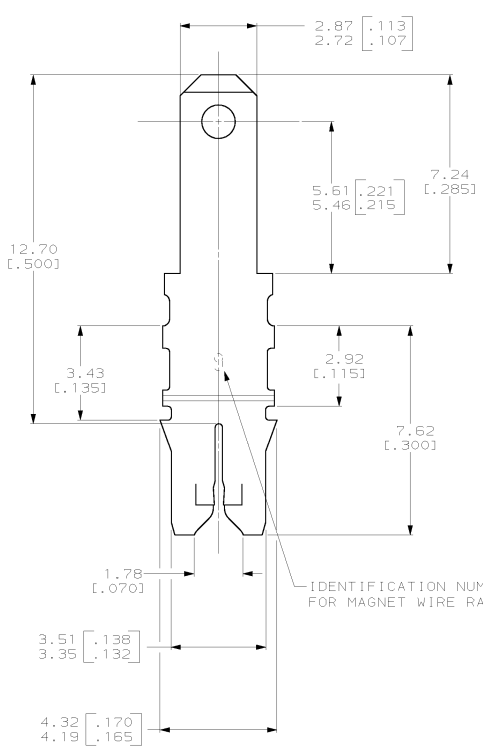


THIS DRAWING IS UNPUBLISHED. RELEASED FOR PUBLICATION
 (C) COPYRIGHT IS BY AMP INCORPORATED. ALL RIGHTS RESERVED.

REVOLUTIONS		DATE	BY	APP'D
AF	50			
A		REVISED STATUS PER 063A-0678-00	260C700	HF KR



- △ SLOTS ACCEPTS EITHER A SINGLE OR DOUBLE MAGNET WIRE OF THE SAME SIZE AND TYPE
 COPPER RANGE: 0.32-0.51mm [#28-#24] AWG
- △ POKE-IN ACCEPTS A 0.5-0.8mm² [#20-#18] AWG SOLID OR FUSED STRANDED LEAD WIRE.
- 4 AFTER INSERTION INTO PLASTIC HOLDER TAB PORTION MUST BE BENT OVER 45° TO 90° OR POTTED-IN TO PREVENT PULL-OUT WHEN MATING RECEPTACLE IS DISCONNECTED.



1217430-1
 PART NUMBER

THIS DRAWING IS A CONTROLLED DOCUMENT.		DATE: 21JAN2000	BY: MICHAEL S. FEHNER	AMP Incorporated Harrisburg, PA 17105-3608
DRAWN BY: EURT A. RANDOLPH		DATE: 21JAN2000	BY: EURT A. RANDOLPH	AMP AMP AMP Incorporated Harrisburg, PA 17105-3608
CHECKED BY: EURT A. RANDOLPH		DATE: 21JAN2000	BY: EURT A. RANDOLPH	
DIMENSIONS: mm (INCHES)		PRODUCT SPEC: 108-2012	APPLICATION SPEC: 114-2046	TERMINAL, TAB, LOOSE PIECE, POKE-IN, 2.75 [1.10] FASTON™ COMBINATION, 300 SERIES MAG-MATE™
MATERIAL: 4M PRE-MILLED BRASS		FINISH: 0.002032 [0.000080]	WEIGHT: -	
MIN TIN PLATE		STAMP CODE: 1217430	CUSTOMER DRAWING	RESTRICTED TO: A2 [00779] C= 1217430
		SCALE: 10:1	SHEET: 1 OF 1	REV: A

1217430