

4

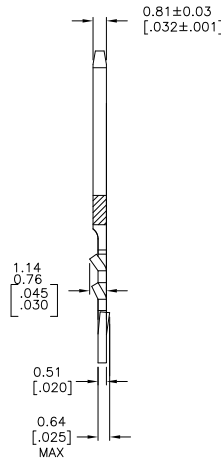
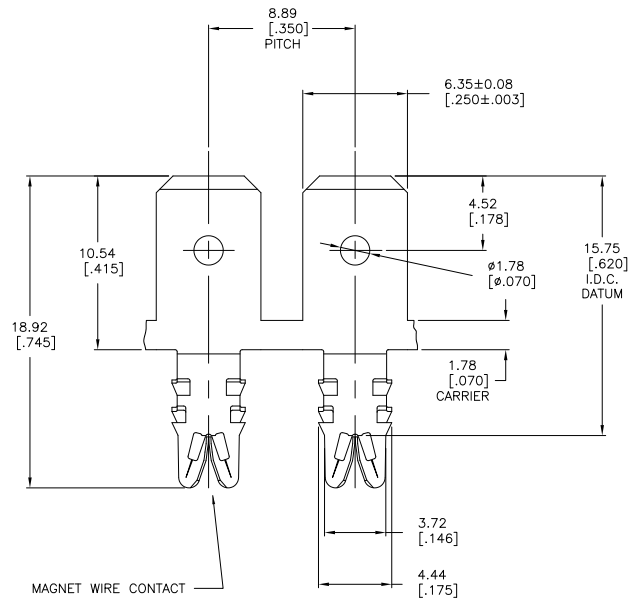
3

2

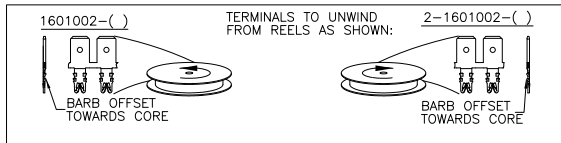
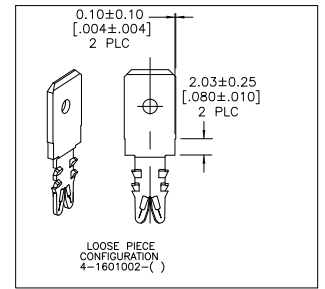
1

THIS DRAWING IS UNPUBLISHED. RELEASED FOR PUBLICATION  
 BY TYCO ELECTRONICS CORPORATION. ALL RIGHTS RESERVED.

LOC	DIST	REVISIONS		
F	LNK	DESCRIPTION	DATE	BY
AF	50	D2	REVISED PER ECR-08-000810	HMR GJ



- SPECIFICATIONS:  
MAGNET WIRE #18 - #34 AWG COPPER,  
1.02mm (.040") - 0.16mm (.006") DIA.  
OTHER SIZES MAY BE ACCOMMODATED,  
CONSULT TYCO ELECTRONICS FOR APPROVAL.
  - POCKET RECOMMENDATION: 1601425.  
ALTERNATE POCKET: 1601421.
- △ 3 TERMINAL APPLICATION TO COMPLY WITH TYCO ELECTRONICS SPECIFICATION 114-13166 FIGURE 6.



-	-	-
-	-	-
-	-	-
PRE TIN PLATE	031-004-002	4-1601002-2
PRE TIN PLATE	131-004-002	2-1601002-2
PRE TIN PLATE	131-055-002	1601002-2
FINISH		REFERENCE PART NUMBER
THIS DRAWING IS A CONTROLLED DOCUMENT.		DATE
DIMENSIONS: mm [INCHES]		DATE
TOLERANCES UNLESS OTHERWISE SPECIFIED:		DATE
0 PLC ± .005	1 PLC ± .005 [0.1]	DATE
2 PLC ± .015 [0.005]	3 PLC ± .015 [0.005]	DATE
4 PLC ± .015 [0.005]	ANGLES ± .5°	DATE
MATERIAL: BRASS, 1/2 HARD	FINISH: SEE TABLE	DATE
APPROVED: J. J. J. WELLS	DATE: 11JAN2002	DATE
CHECKED: M. FEHER	DATE: 11JAN2002	DATE
DESIGNED: K. RANDOLPH	DATE: 11JAN2002	DATE
PRODUCT SPEC: 108-2085	APPLICATION SPEC: △ 3	DATE
WEIGHT: -	SIZE: A2	DATE
CUSTOMER DRAWING	QAGE CODE: 00779	DATE
	DRAWING NO: C=1601002	DATE
	RESTRICTED TO: -	DATE
	SCALE: 6:1	DATE
	SHEET: 1 of 1	DATE
	REV: D2	DATE

1601002

A