

4

3

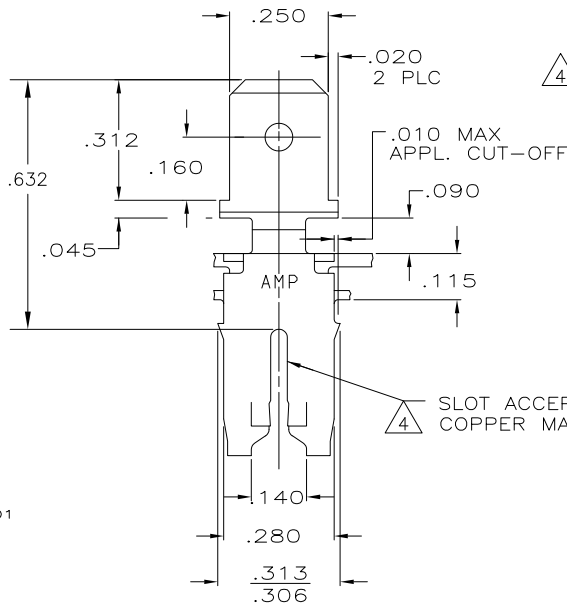
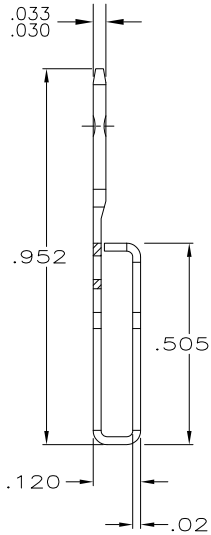
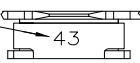
2

1

THIS DRAWING IS UNPUBLISHED. RELEASED FOR PUBLICATION  
 © COPYRIGHT - BY TYCO ELECTRONICS CORPORATION. ALL INTERNATIONAL RIGHTS RESERVED.

LOC	DIST	REVISIONS				
P	LTR	DESCRIPTION	DATE	DWN	APVD	
AF	50					
		C1	REVISED PER ECR-09-002564	12FEB09	HMR KR	

IDENTIFICATION NUMBER FOR MAGNET WIRE RANGE



- 1 MAG-MATE CAVITY SPECIFICATION
- 2 CONTINUOUS STRIP ON REELS WITH TERMINALS LOCATED ON .330 CENTERS.
- 3 AFTER INSERTION INTO PLASTIC HOLDER, TAB PORTION MUST BE BENT OVER 45° TO 90° OR POTTED-IN TO PREVENT PULL-OUT WHEN MATING RECEPTACLE IS DISCONNECTED.
- 4 TWO #14-13.5 COPPER MAGNET WIRES ACCEPTABLE AT CAVITY ANVIL HEIGHT OF .155-.165.

4 SLOT ACCEPTS #13-#14 COPPER MAGNET WIRE

63465-1  
PART NO

THIS DRAWING IS A CONTROLLED DOCUMENT.		DWN M.S. FEHER 4/21/87	Tyco Electronics Corporation Harrisburg, PA 17105-3608	
DIMENSIONS: INCHES		CHK G. YETTER 4/21/87	NAME TAB, .250 FASTON,™ MAG-MATE™	
TOLERANCES UNLESS OTHERWISE SPECIFIED:		APVD J. SWARTZ 4/21/87	PRODUCT SPEC	
0 PLC ± -		APPLICATION SPEC		
1 PLC ± -		SIZE		
2 PLC ± -		CAGE CODE		
3 PLC ± .015		DRAWING NO		
4 PLC ± -		RESTRICTED TO		
ANGLES ± -		WEIGHT		
MATERIAL #4H PRE-MILLED BRASS		114-2066		
FINISH TIN		A3 00779 C-63465		
		CUSTOMER DRAWING		
		SCALE 4:1 SHEET 1 OF 1 REV C1		