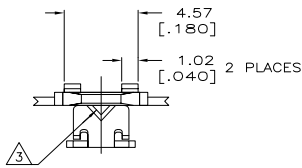


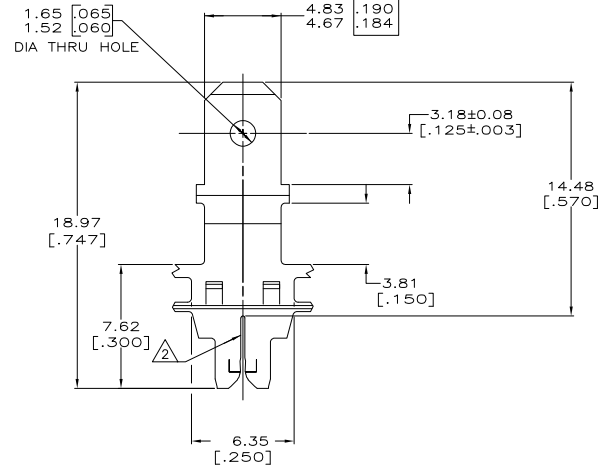
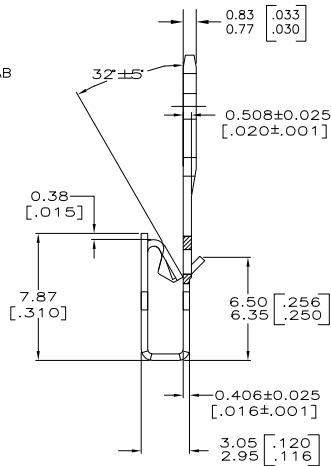
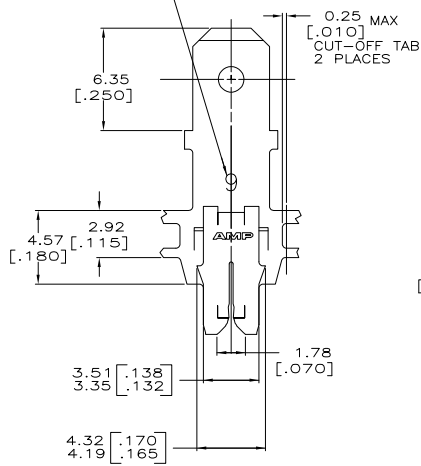
THIS DRAWING IS UNPUBLISHED. RELEASED FOR PUBLICATION. BY TYCO ELECTRONICS CORPORATION. ALL RIGHTS RESERVED.

LOC	QTY	REV	DESCRIPTION	DATE	BY	APP
AF	50	C	REVISED PER ECR-06-010412	02NOV06	HMR	KR



- 1 CONTINUOUS STRIP ON REELS WITH TERMINALS LOCATED ON  $8.38 \pm 0.08$  [.330 ± .003] CENTERS.
- 2 SLOTS ACCEPT EITHER A SINGLE OR DOUBLE MAGNET WIRE OF THE SAME SIZE AND TYPE. COPPER RANGE: 0.30-0.51mm [#28.5-#24] AWG.
- 3 POKE-IN ACCEPTS A  $0.81-1.02\text{mm}^2$  [#20-#18] AWG SOLID OR FUSED STRANDED LEAD WIRE.
- 4 PRELIMINARY - NOT FOR PRODUCTION.
- 5 PREPRODUCTION - FASR REQUIRED

IDENTIFICATION NUMBER 9 FOR MAGNET WIRE RANGE



4M PRE-MILLED BRASS	1217857-2
0B2 PRE-MILLED BRASS	1217857-1
MATERIAL	PART NUMBER

THIS DRAWING IS A CONTROLLED DOCUMENT.		DN MICHAEL S. FEHER 2348/2002	TYCO Tyco Electronics Corporation Harrisburg, PA 17105-3608
DIMENSIONS: TO DIMENSIONS UNLESS OTHERWISE SPECIFIED:		DR KURT A. RANDELEH 2348/2002	DATE 2348/2002
mm [INCHES]		APR KURT A. RANDELEH 2348/2002	TYPE TERMINAL, POKE-IN / 4.75 [.187] FASTON TAB, COMBINATION, 300 SERIES MAG-MATE
TOLERANCES UNLESS OTHERWISE SPECIFIED:		PRODUCT SPEC 108-2012	SIZE A2
Ø FUC ± .010	± .010	APPLICATION SPEC 114-2094	SCALE 6:1
Ø FUC ± .010	± .010	WEIGHT -	SHEET 1 of 1
Ø FUC ± .010	± .010	FINISH 0.0002(32) (000080) MIN. TIN PLATE	REV C
Ø FUC ± .010	± .010	CUSTOMER DRAWING	

AMP 1471-B REV 31MMR2000

1217857