

4

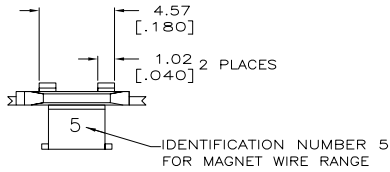
3

2

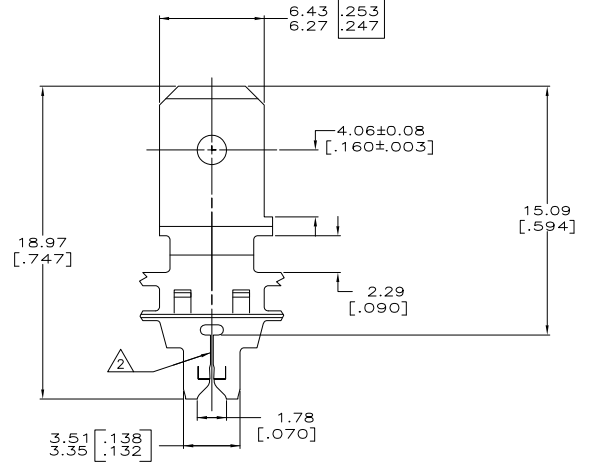
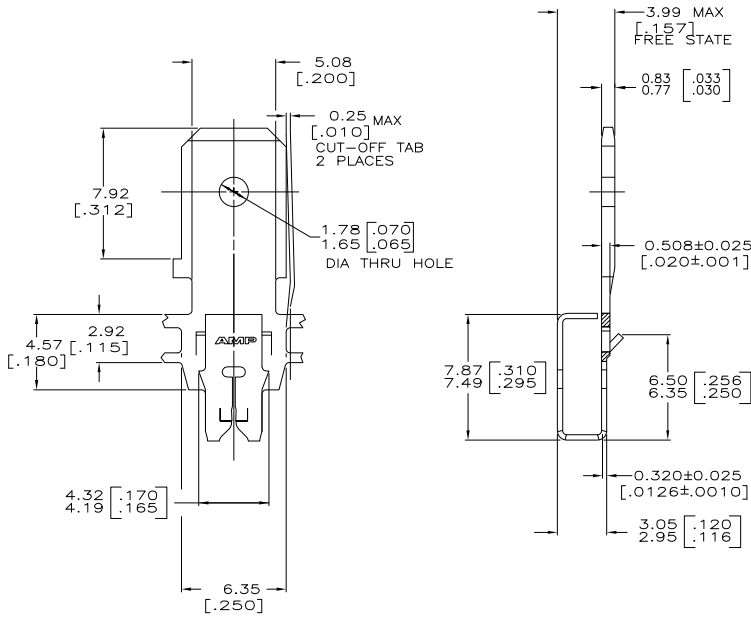
1

THIS DRAWING IS UNPUBLISHED. RELEASED FOR PUBLICATION
 © COPYRIGHT BY TYCO ELECTRONICS CORPORATION. ALL RIGHTS RESERVED.

LOC		DIBT		REVISIONS			
F	LTR	DESCRIPTION	DATE	BY	APP'D		
AF	50	B	REVISED PER ECR-06-010412	31OCT06	HMR	KR	



- 1 CONTINUOUS STRIP ON REELS WITH TERMINALS LOCATED ON 8.38±0.08 [.330±.003] CENTERS.
- 2 SLOT ACCEPTS 0.25-0.32mm [#30-#28] AWG COPPER MAGNET WIRE.



1217152

A

1217152-1
 PART NUMBER

THIS DRAWING IS A CONTROLLED DOCUMENT.		DRW: MICHAEL S. FEYER	06APR1999		Tyco Electronics Corporation Harrisburg, PA 17105-3608
DIMENSIONS: mm [INCHES]		CHK: PHILLIP M. FORTNEY	06APR1999		PART NUMBER
TOLERANCES UNLESS OTHERWISE SPECIFIED:		APP: PETE DESANTIS	06APR1999	NAME	
0 PLG ± .010	1 PLG ± .010	PRODUCT SPEC	108-2012	TAB, 6.35[.250] FASTON™	
2 PLG ± .025(0.10)	3 PLG ± .025	APPLICATION SPEC	114-2094	300 SERIES MAG-MATE™	
4 PLG ± .050	ANGLES ± .1	WEIGHT	-	SIZE	CAGE CODE
MATERIAL: 4M PRE-MILLED BRASS	FINISH: 0.002032 [.000080] MIN TIN PLATE	CUSTOMER DRAWING	A2	00779	DRAWING NO: 1217152
			SCALE: 6:1	SHEET: 1 of 1	REV: B

AMP 1471-9 REV 31MM2000