

4

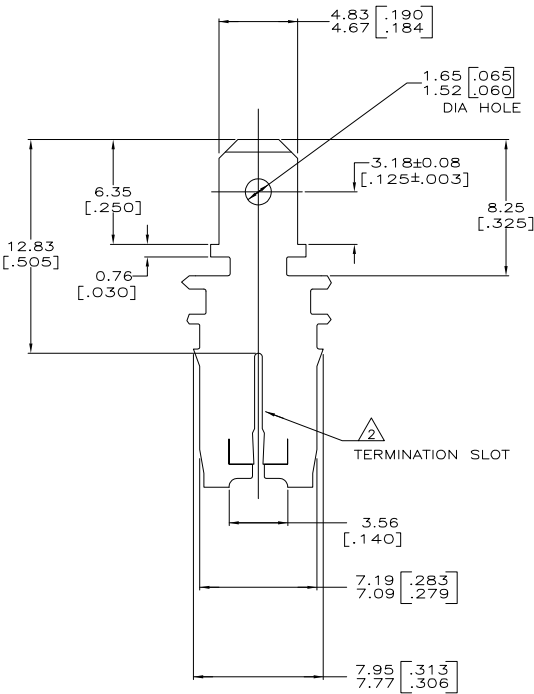
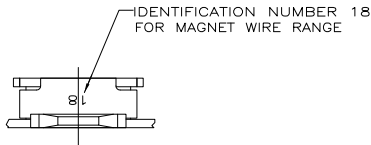
3

2

1

THIS DRAWING IS UNPUBLISHED. RELEASED FOR PUBLICATION
 BY TYCO ELECTRONICS CORPORATION. ALL RIGHTS RESERVED.

LOC	DIST	REVISIONS				
		F	LR	DATE	BY	APP'D
AF	50	C		31AUG06	HMR	KR
		DESCRIPTION				
		REVISED PER ECR-06-010427				



- CONTINUOUS STRIP ON REELS WITH TERMINALS LOCATED ON 8.38±0.08 [.330±.003] CENTERS.
 △ SLOT TERMINATES EITHER A SINGLE OR DOUBLE MAGNET WIRE OF THE SAME SIZE AND TYPE.
 COPPER RANGE: 0.64-0.81mm [#22-#20] AWG.
- AFTER INSERTION INTO PLASTIC HOLDER, TAB PORTION MUST BE BENT OVER 45° TO 90° OR POTTED-IN TO PREVENT PULL-OUT WHEN MATING RECEPTACLE IS DISCONNECTED.
- △ VARNISH RESIST OVER 0.002032 [.000080] MIN TIN PLATE
- △ PRELIMINARY - NOT FOR PRODUCTION

0.002032 [.000080] MIN TIN PL		PART NUMBER	
FINISH		1217339-2	
1217339-1		1217339-1	
THIS DRAWING IS A CONTROLLED DOCUMENT.		DWG: MICHAEL S. FEYER 23FEB2000	
DIMENSIONS: mm [INCHES]		CHK: KURT A. RANDOLPH 23FEB2000	
TOLERANCES UNLESS OTHERWISE SPECIFIED:		APP'D: KURT A. RANDOLPH 23FEB2000	
0 PLC ± .010		NAME: Tycos Electronics Corporation	
1 PLC ± .015		Harrisburg, PA 17105-3608	
2 PLC ± .025 (0.10)		TAB, 4.75[.187] FASTON, 500 SERIES MAG-MATE	
3 PLC ± .030		PRODUCT SPEC: 108-2053	
4 PLC ± .040		APPLICATION SPEC: 114-2066	
ANGLES ± .5°		SIZE: A2	
MATERIAL: 082 BRASS		CASE CODE: C=1217339	
FINISH: SEE TABLE		DRAWING NO: 1217339	
		RESTRICTED TO: -	
		CUSTOMER DRAWING	
		SCALE: 6:1	
		SHEET: 1 of 1	
		REV: C	

AMP 1471-9 REV 31MM2000

1217339

A