

4

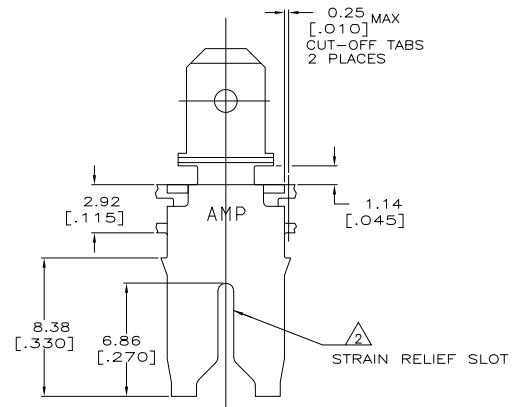
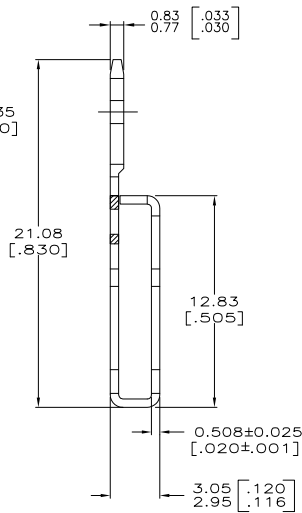
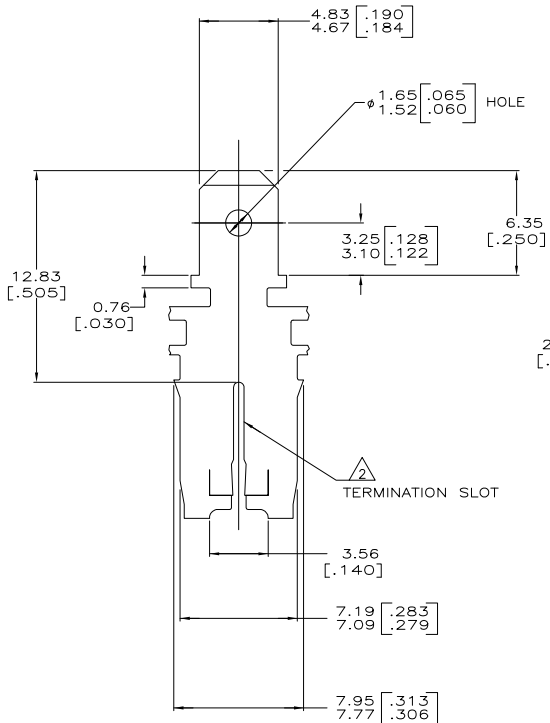
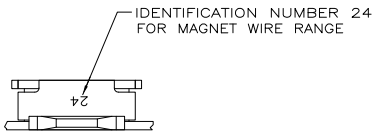
3

2

1

THIS DRAWING IS UNPUBLISHED. RELEASED FOR PUBLICATION  
 COPYRIGHT BY TYCO ELECTRONICS CORPORATION. ALL RIGHTS RESERVED.

LOC		DIBT		REVISIONS			
F	LR	DESCRIPTION	DATE	BY	APP'D		
E		REVISED PER ECR-06-010427	30AUG06	HMR	KR		



- 1 CONTINUOUS STRIP ON REELS WITH TERMINALS LOCATED ON 8.38±0.08 [.330±.003] CENTERS.
- 2 SLOT ACCEPTS 0.91-1.15mm [#19-#17] AWG COPPER MAGNET WIRE RANGE. 2 WIRES OF THE SAME SIZE AND TYPE PER SLOT.
- 3 AFTER INSERTION INTO PLASTIC HOLDER TAB PORTION MUST BE BENT OVER 45° TO 90° OR POTTED-IN TO PREVENT PULL-OUT WHEN MATING RECEPTACLE IS DISCONNECTED.
- 4 VARNISH RESIST OVER 0.002032 [.000080] MIN TIN PLATE
- 5 PRELIMINARY - NOT FOR PRODUCTION

0.002032 [.000080] MIN TIN PL	1217090-2
	1217090-1
FINISH	PART NUMBER

THIS DRAWING IS A CONTROLLED DOCUMENT.		DRN MICHAEL S. FEHLER 27MAY98	Tyco Electronics Corporation	
		CHK JEFF R. RUTH 27MAY98	Harrisburg, PA 17105-3608	
DIMENSIONS: mm [INCHES]		APPC NELSON E. NEFF	TAB, 4.75[.187] FASTON, MAG-MATE	
TOLERANCES UNLESS OTHERWISE SPECIFIED:		PRODUCT SPEC: 108-2053	APPLICATION SPEC: 114-2066	
0 PLG ± -	1 PLG ± -	2 PLG ± 0.25(0.010)	3 PLG ± -	4 PLG ± -
MATERIAL: 082 BRASS		FINISH: SEE TABLE	SIZE: A2	CAGE CODE: 00779
		WEIGHT: -	DRAWING NO: 1217090	RESTRICTED TO: -
		CUSTOMER DRAWING	SCALE: 6:1	SHEET: 1 of 1

AMP 1471-9 REV 31MM2000

1217090

A