

4

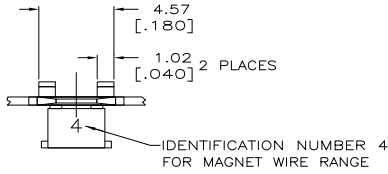
3

2

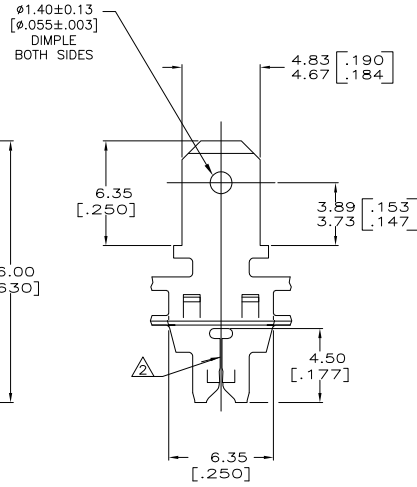
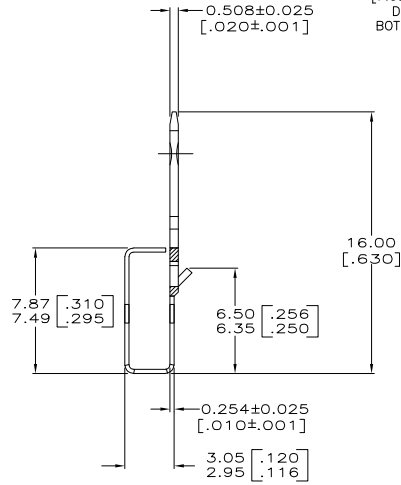
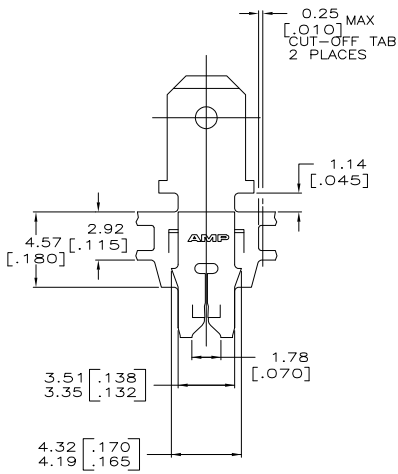
1

THIS DRAWING IS UNPUBLISHED. RELEASED FOR PUBLICATION  
 © COPYRIGHT BY TYCO ELECTRONICS CORPORATION. ALL RIGHTS RESERVED.

LOC		DIBT		REVISIONS			
P	LTR	DESCRIPTION	DATE	MIN	APD		
M		REV PER 063A-0747-04	08OCT2004	RF	KR		



1 CONTINUOUS STRIP ON REELS WITH TERMINALS LOCATED ON 8.38 [.330] CENTERS.  
 SLOT ACCEPTS 0.18-0.23mm [#33-#31] AWG COPPER MAGNET WIRE.  
 2 WIRES OF THE SAME SIZE MAX PER SLOT.



082 PRE-MILLED BRASS	63255-2
4M PRE-MILLED BRASS	63255-1
MATERIAL	PART NUMBER

THIS DRAWING IS A CONTROLLED DOCUMENT.		BY MICHAEL S. FEHNER 7/11/91	Tyco Electronics Corporation Harrisburg, PA 17105-3608
DRAWN BY JEFF R. RUTH 7/12/91		APPROVED BY [Signature]	
DIMENSIONS: INCHES	UNLESS OTHERWISE SPECIFIED	PRODUCT SPEC 108-2012	TAB, 4.75 [.187] FASTON, MAG-MATE
MATERIAL SEE TABLE	0.00127 [.000050] MIN TIN	APPLICATION SPEC 114-2094	RESTRICTED TO
FINISH		RIGHT	SIZE CHG CODE DRAWING NO A2 00779 C-63255
CUSTOMER DRAWING		SCALE 6:1	SHEET 1 OF 1 REV M

AMP 1471-9 REV 31MM2000

63255

A