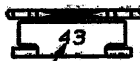


DRAWING MADE IN THIRD ANGLE PROJECTION

THIS DRAWING IS UNPUBLISHED. RELEASED FOR PUBLICATION, 19

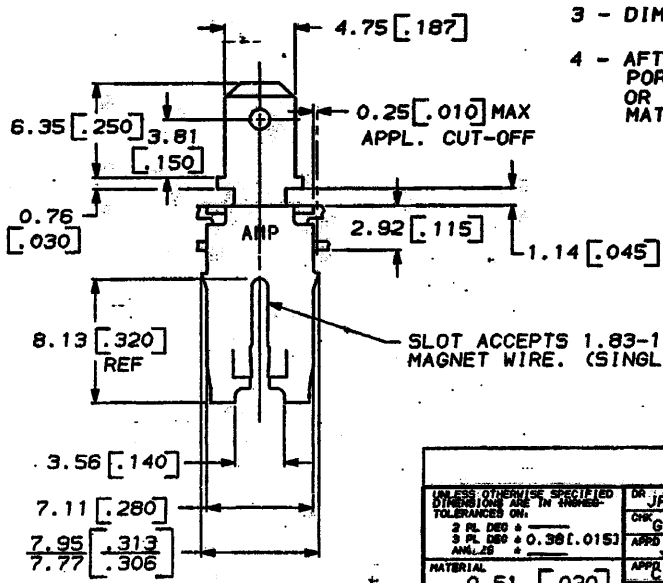
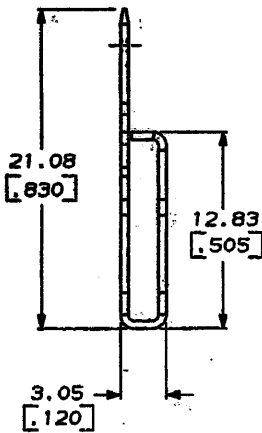
COPYRIGHT IS BY AMP INCORPORATED, HARRISBURG, PA. ALL INTERNATIONAL RIGHTS RESERVED. AMP PRODUCTS MAY BE COVERED BY U.S. AND FOREIGN PATENTS AND/OR PATENTS PENDING.

LOC	DIST	ZONE	LTR	DESCRIPTION	DATE	APPROVED
AF	50			REACTIVATED PER AF-5811	8/12/88	NSF



IDENTIFICATION NO. FOR MAGNET WIRE RANGE

- 1 - FOR MAG-MATE CAVITY SPECIFICATION REFER TO APPLICATION SPEC #114-2066.
- 2 - CONTINUOUS STRIP ON REELS WITH TERMINALS LOCATED ON 8.38 [0.330] CENTERS.
- 3 - DIMENSIONS IN BRACKETS ARE IN INCHES.
- 4 - AFTER INSERTION INTO PLASTIC HOLDER TAB PORTION MUST BE BENT OVER 45° TO 90° OR POTTED-IN TO PREVENT PULL-OUT WHEN MATING RECEPTACLE IS DISCONNECTED.



SLOT ACCEPTS 1.83-1.54^{DIA} [0.13-0.14.5] COPPER MAGNET WIRE. (SINGLE WIRE ONLY)

METRIC

UNLESS OTHERWISE SPECIFIED DIMENSIONS ARE IN INCHES TOLERANCES ON:		DR. JR RUTH 2-12-88	AMP AMP INCORPORATED Harrisburg, Pa. 17105	
2 PL. DES ±		CHK. G YETTER 2-12-88		
3 PL. DES ±	0.38 [0.015]	APPD. J SWARTZ 2-12-88	NAME: MAG-MATE	
MATERIAL	0.51 [0.020] BRASS	APPD. C. ATHERTON 2-12-88	.187 FASTON TAB	
FINISH	TIN	APPLICATION SPEC	SIZE B	FROM NO 00779
		THEORY	SCALE NTS	DRAWING NO 63428
				SHEET 1 OF 1

63428-1
PART NO

AMP-1470-15 REV 10-84

CUSTOMER DRAWING