

4

3

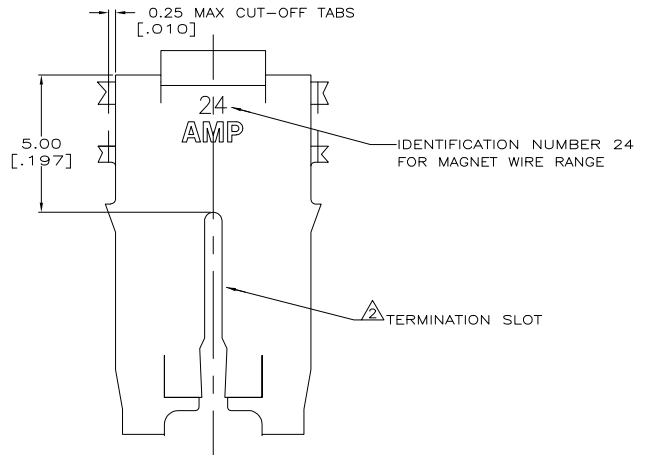
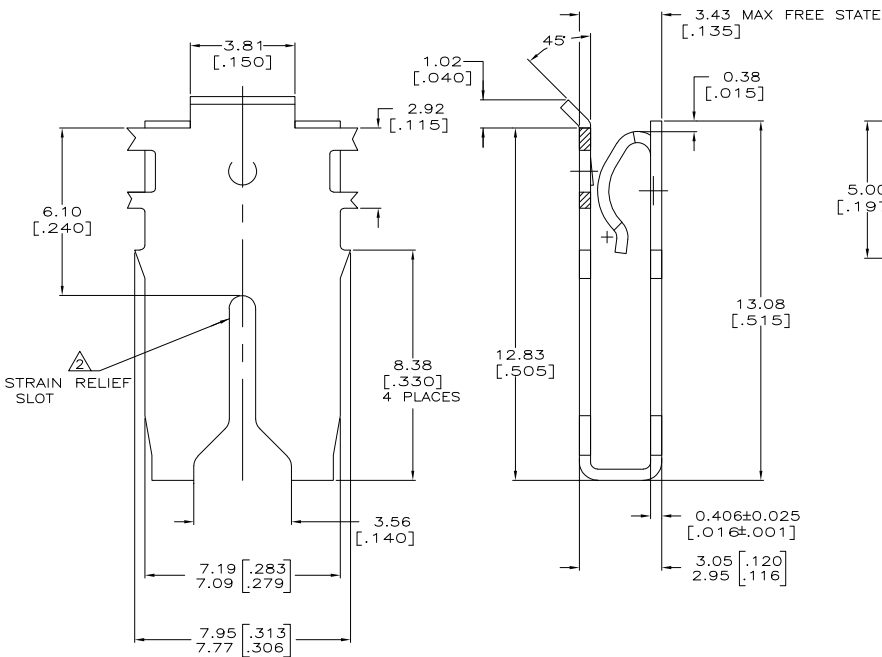
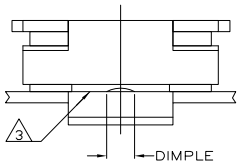
2

1

THIS DRAWING IS UNPUBLISHED. RELEASED FOR PUBLICATION
 BY TYCO ELECTRONICS CORPORATION. ALL RIGHTS RESERVED.

LOC	DIST	REVISIONS			
F	LTR	DESCRIPTION	DATE	OWN	APPD
AF	50	B1	CREATED PER ECR-07-002951	12FEB07	MF KR

- 1 CONTINUOUS STRIP ON REELS WITH TERMINALS LOCATED ON 10.4 ± 0.08 [4.10 ± 0.03] CENTERS.
- △ 2 SLOT ACCEPTS 0.91-1.15mm [#19-#17] AWG COPPER MAGNET WIRE. 2 WIRES OF THE SAME SIZE MAX PER SLOT.
- △ 3 CONTACT LEAF ACCEPTS 0.81 [0.32] THICK POKE-IN TAB, (REFERENCE TAB DRAWING 1217324-1).
- △ 4 0.002032 [0.00080] MIN TIN PLATE OVER 0.00127 [0.00050] MIN NICKEL UNDERPLATE.



1217356-1
 PART NUMBER

THIS DRAWING IS A CONTROLLED DOCUMENT.		DRW: MICHAEL S. FEHLER 12FEB2007	Tyco Electronics Corporation Harrisburg, PA 17105-3608
DIMENSIONS: mm [INCHES]		CHK: KURT A. RANDOLPH 12FEB2007	
TOLERANCES UNLESS OTHERWISE SPECIFIED:		APD: KURT A. RANDOLPH 12FEB2007	SPECIAL LEAF CONTACT, 500 SERIES MAG-MATE
0 P.L.C. ± .010		NAME: PRODUCT SPEC: 108-2053	
1 P.L.C. ± .015		APPLICATION SPEC: 114-2066	RESTRICTED TO: -
2 P.L.C. ± .025 (0.10)		WEIGHT: -	SIZE: A2
3 P.L.C. ± .030		FINISH: △	CAGE CODE: 00779
4 P.L.C. ANGLES ± .5°		MATERIAL: 4M BRASS	DRAWING NO: C=1217356
		CUSTOMER DRAWING	SCALE: 10:1
			SHEET: 1 of 1
			REV: B1

AMP 1471-9 REV 31MM2000

1217356

A